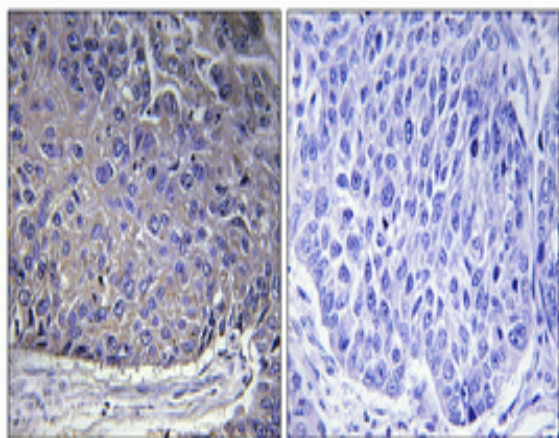


## Ribosomal Protein L37A Polyclonal Antibody

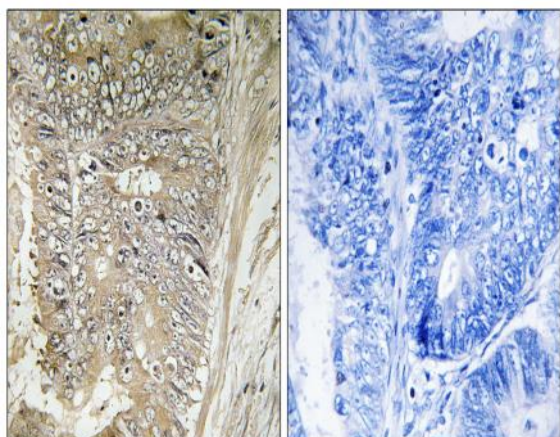
<b>Catalog No :</b>	YT4112
<b>Reactivity :</b>	Human;Mouse;Rat
<b>Applications :</b>	IHC;IF;WB;ELISA
<b>Target :</b>	Ribosomal Protein L37A
<b>Fields :</b>	>>Ribosome;>>Coronavirus disease - COVID-19
<b>Gene Name :</b>	RPL37A
<b>Protein Name :</b>	60S ribosomal protein L37a
<b>Human Gene Id :</b>	6168
<b>Human Swiss Prot No :</b>	P61513
<b>Mouse Gene Id :</b>	19981
<b>Mouse Swiss Prot No :</b>	P61514
<b>Rat Gene Id :</b>	1.00362e+008
<b>Rat Swiss Prot No :</b>	D4AAZ6
<b>Immunogen :</b>	The antiserum was produced against synthesized peptide derived from human RPL37A. AA range:21-70
<b>Specificity :</b>	Ribosomal Protein L37A Polyclonal Antibody detects endogenous levels of Ribosomal Protein L37A protein.
<b>Formulation :</b>	Liquid in PBS containing 50% glycerol, 0.5% BSA and 0.02% sodium azide.
<b>Source :</b>	Polyclonal, Rabbit,IgG
<b>Dilution :</b>	WB 1:500-2000 IHC 1:100 - 1:300. ELISA: 1:40000.. IF 1:50-200

<b>Purification :</b>	The antibody was affinity-purified from rabbit antiserum by affinity-chromatography using epitope-specific immunogen.
<b>Concentration :</b>	1 mg/ml
<b>Storage Stability :</b>	-15°C to -25°C/1 year (Do not lower than -25°C)
<b>Observed Band :</b>	10kD
<b>Cell Pathway :</b>	Ribosome;
<b>Background :</b>	Ribosomes, the organelles that catalyze protein synthesis, consist of a small 40S subunit and a large 60S subunit. Together these subunits are composed of 4 RNA species and approximately 80 structurally distinct proteins. This gene encodes a ribosomal protein that is a component of the 60S subunit. The protein belongs to the L37AE family of ribosomal proteins. It is located in the cytoplasm. The protein contains a C4-type zinc finger-like domain. As is typical for genes encoding ribosomal proteins, there are multiple processed pseudogenes of this gene dispersed through the genome. [provided by RefSeq, Jul 2008],
<b>Function :</b>	similarity:Belongs to the ribosomal protein L37Ae family.,
<b>Subcellular Location :</b>	nucleus,cytosol,ribosome,focal adhesion,cytosolic large ribosomal subunit,extracellular exosome,
<b>Expression :</b>	B-cell,Brain,Cerebellum,Nasal polyp,Pancreas,Salivary gland,Skin,Testis,

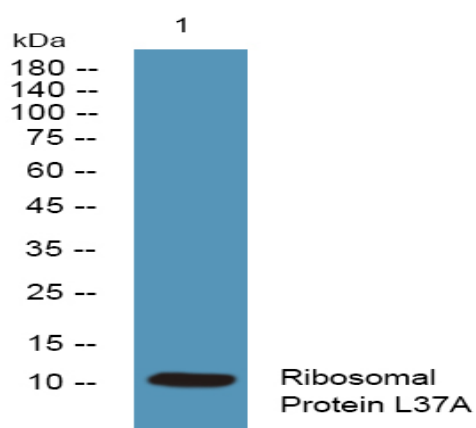
## Products Images



Immunohistochemical analysis of paraffin-embedded Human lung cancer. Antibody was diluted at 1:100 (4° overnight). High-pressure and temperature Tris-EDTA, pH 8.0 was used for antigen retrieval. Negative control (right) obtained from antibody was pre-absorbed by immunogen peptide.



Immunohistochemistry analysis of paraffin-embedded human colon carcinoma tissue, using RPL37A Antibody. The picture on the right is blocked with the synthesized peptide.



Western blot analysis of lysates from K562 cells, primary antibody was diluted at 1:1000, 4° over night