

## Rho D Polyclonal Antibody

<b>Catalog No :</b>	YT4079
<b>Reactivity :</b>	Human;Rat;Mouse;
<b>Applications :</b>	WB;ELISA;IHC
<b>Target :</b>	Rho D
<b>Fields :</b>	>>Axon guidance
<b>Gene Name :</b>	RHOD
<b>Protein Name :</b>	Rho-related GTP-binding protein RhoD
<b>Human Gene Id :</b>	29984
<b>Human Swiss Prot No :</b>	O00212
<b>Mouse Swiss Prot No :</b>	P97348
<b>Immunogen :</b>	The antiserum was produced against synthesized peptide derived from human RHOD. AA range:113-162
<b>Specificity :</b>	Rho D Polyclonal Antibody detects endogenous levels of Rho D protein.
<b>Formulation :</b>	Liquid in PBS containing 50% glycerol, 0.5% BSA and 0.02% sodium azide.
<b>Source :</b>	Polyclonal, Rabbit,IgG
<b>Dilution :</b>	WB 1:500-2000;IHC 1:50-300; ELISA 2000-20000
<b>Purification :</b>	The antibody was affinity-purified from rabbit antiserum by affinity-chromatography using epitope-specific immunogen.
<b>Concentration :</b>	1 mg/ml
<b>Storage Stability :</b>	-15°C to -25°C/1 year(Do not lower than -25°C)

**Observed Band :** 25kD

**Cell Pathway :** Axon guidance;

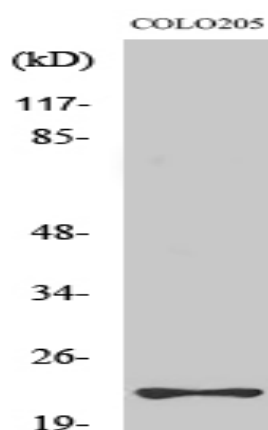
**Background :** Ras homolog, or Rho, proteins interact with protein kinases and may serve as targets for activated GTPase. They play a critical role in muscle differentiation. The protein encoded by this gene binds GTP and is a member of the small GTPase superfamily. It is involved in endosome dynamics and reorganization of the actin cytoskeleton, and it may coordinate membrane transport with the function of the cytoskeleton. Two transcript variants encoding different isoforms have been found for this gene. [provided by RefSeq, Jul 2014],

**Function :** function:Involved in endosome dynamics. May coordinate membrane transport with the function of the cytoskeleton. Participates in reorganization of actin cytoskeleton.,similarity:Belongs to the small GTPase superfamily. Rho family.,subunit:In the GTP-bound form, interacts with DIAPH2 isoform 3.,tissue specificity:Heart, placenta, liver, skeletal muscle, and pancreas and, with weaker intensity, in several other tissues.,

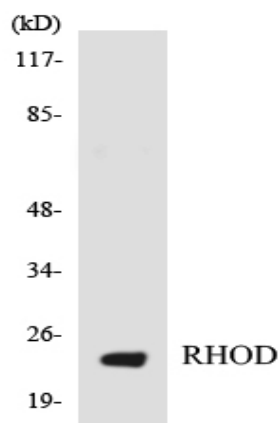
**Subcellular Location :** Cell membrane ; Lipid-anchor ; Cytoplasmic side . Early endosome . Colocalizes with RAB5 to early endosomes (By similarity). .

**Expression :** Heart, placenta, liver, skeletal muscle, and pancreas and, with weaker intensity, in several other tissues.

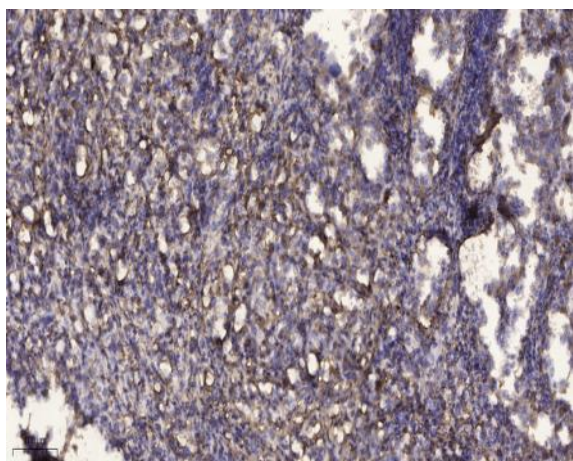
## Products Images



Western Blot analysis of various cells using Rho D Polyclonal Antibody diluted at 1:500



Western blot analysis of the lysates from HT-29 cells using RHOD antibody.



Immunohistochemical analysis of paraffin-embedded human Squamous cell carcinoma of lung. 1, Antibody was diluted at 1:200(4° overnight). 2, Tris-EDTA,pH9.0 was used for antigen retrieval. 3,Secondary antibody was diluted at 1:200(room temperature, 45min).