

S-100P Polyclonal Antibody

Catalog No :	YT4203
Reactivity :	Human;Rat;Mouse;
Applications :	WB;IHC;IF;ELISA
Target :	S100P
Gene Name :	S100P
Protein Name :	Protein S100-P
Human Gene Id :	6286
Human Swiss Prot No :	P25815
Immunogen :	The antiserum was produced against synthesized peptide derived from human S100P. AA range:26-75
Specificity :	S-100P Polyclonal Antibody detects endogenous levels of S-100P protein.
Formulation :	Liquid in PBS containing 50% glycerol, 0.5% BSA and 0.02% sodium azide.
Source :	Polyclonal, Rabbit,IgG
Dilution :	WB 1:500 - 1:2000. IHC 1:100 - 1:300. ELISA: 1:20000.. IF 1:50-200
Purification :	The antibody was affinity-purified from rabbit antiserum by affinity-chromatography using epitope-specific immunogen.
Concentration :	1 mg/ml
Storage Stability :	-15°C to -25°C/1 year(Do not lower than -25°C)
Observed Band :	10kD
Background :	The protein encoded by this gene is a member of the S100 family of proteins containing 2 EF-hand calcium-binding motifs. S100 proteins are localized in the

cytoplasm and/or nucleus of a wide range of cells, and involved in the regulation of a number of cellular processes such as cell cycle progression and differentiation. S100 genes include at least 13 members which are located as a cluster on chromosome 1q21; however, this gene is located at 4p16. This protein, in addition to binding Ca^{2+} , also binds Zn^{2+} and Mg^{2+} . This protein may play a role in the etiology of prostate cancer. [provided by RefSeq, Jul 2008],

Function :

miscellaneous:This protein binds two calcium ions.,similarity:Belongs to the S-100 family.,similarity:Contains 2 EF-hand domains.,subcellular location:Colocalizes with S100BPB in the nucleus.,subunit:Homodimer. Interacts with S100BPB and S100Z.,tissue specificity:Up-regulated in various pancreatic ductal adenocarcinomas and pancreatic intraepithelial neoplasias.,

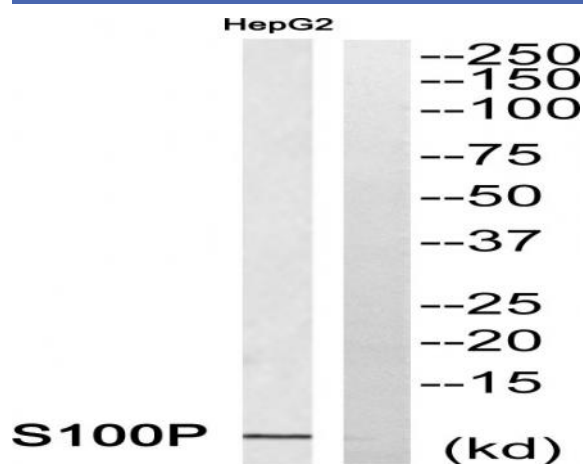
Subcellular Location :

Nucleus. Cytoplasm. Cell projection, microvillus membrane. Colocalizes with S100BPB in the nucleus. Colocalizes with EZR in the microvilli in a calcium-dependent manner.

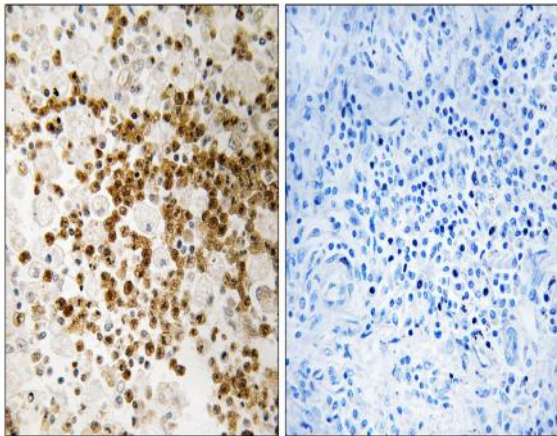
Expression :

Detected in all of the tissues except brain, testis and small intestine, expression level is higher in placenta, heart, lung, skeletal muscle, spleen and leukocyte. Up-regulated in various pancreatic ductal adenocarcinomas and pancreatic intraepithelial neoplasias.

Products Images



Western blot analysis of S100P Antibody. The lane on the right is blocked with the S100P peptide.



Immunohistochemistry analysis of paraffin-embedded human lung carcinoma, using S100P Antibody. The lane on the right is blocked with the S100P peptide.