

Repo-Man Polyclonal Antibody

Catalog No :	YT4053
Reactivity :	Human
Applications :	WB;IHC;IF;ELISA
Target :	Repo-Man
Gene Name :	CDCA2
Protein Name :	Cell division cycle-associated protein 2
Human Gene Id :	157313
Human Swiss Prot No :	Q69YH5
Mouse Swiss Prot No :	Q14B71
Immunogen :	The antiserum was produced against synthesized peptide derived from human CDCA2. AA range:511-560
Specificity :	Repo-Man Polyclonal Antibody detects endogenous levels of Repo-Man protein.
Formulation :	Liquid in PBS containing 50% glycerol, 0.5% BSA and 0.02% sodium azide.
Source :	Polyclonal, Rabbit,IgG
Dilution :	WB 1:500 - 1:2000. IHC 1:100 - 1:300. ELISA: 1:5000.. IF 1:50-200
Purification :	The antibody was affinity-purified from rabbit antiserum by affinity-chromatography using epitope-specific immunogen.
Concentration :	1 mg/ml
Storage Stability :	-15°C to -25°C/1 year(Do not lower than -25°C)
Observed Band :	120-130kD

Background :

cell division cycle associated 2(CDCA2) Homo sapiens This gene encodes a targeting subunit of the cell-cycle associated protein, protein phosphatase 1, with a role in targeting this protein to chromatin during anaphase. These two proteins comprise a phosphatase complex that is involved in nuclear envelope reformation and regulation of the DNA damage response. The encoded protein may also play a role in cancer progression. Alternative splicing results in multiple transcript variants. [provided by RefSeq, Dec 2015],

Function :

function:Regulator of chromosome structure during mitosis required for condensin-depleted chromosomes to retain their compact architecture through anaphase. Acts by mediating the recruitment of phosphatase PP1-gamma subunit (PPP1CC) to chromatin at anaphase and into the following interphase. At anaphase onset, its association with chromatin targets a pool of PPP1CC to dephosphorylate substrates.,PTM:Phosphorylated by CDK1. May regulate its subcellular location.,subcellular location:Excluded from the nucleolus. Present in nucleoplasm throughout the G1, S and G2 stages of the cell cycle. During M phase, it becomes diffuse throughout the cell as the nuclear membrane breaks down, and faintly accumulates later on metaphase chromatin. As the cell progresses to anaphase, it accumulates on chromatin.,subunit:Interacts with PPP1CC.,tissue specificity:Ubiquitously expressed.,

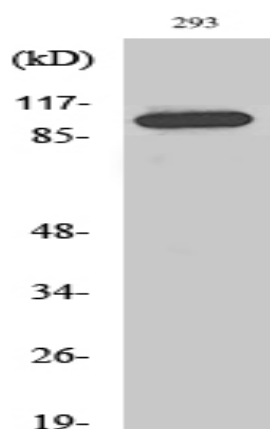
Subcellular Location :

Nucleus . Excluded from the nucleolus. Present in nucleoplasm throughout the G1, S and G2 stages of the cell cycle. During M phase, it becomes diffuse throughout the cell as the nuclear membrane breaks down, and faintly accumulates later on metaphase chromatin. As the cell progresses to anaphase, it accumulates on chromatin.

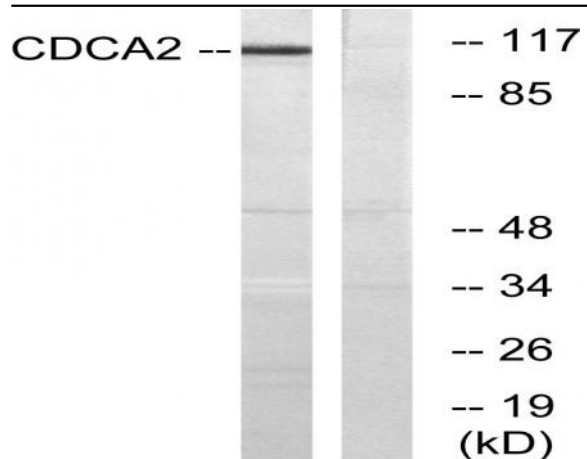
Expression :

Ubiquitously expressed.

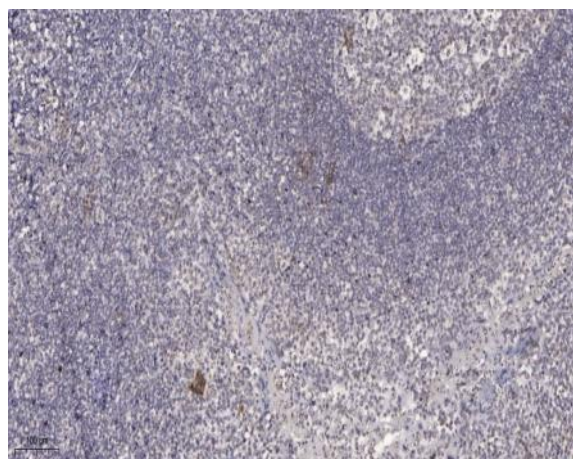
Products Images



Western Blot analysis of various cells using Repo-Man Polyclonal Antibody diluted at 1:2000 cells nucleus extracted by Minute TM Cytoplasmic and Nuclear Fractionation kit (SC-003, Inventbiotech, MN, USA).



Western blot analysis of lysates from 293 cells, using CDCA2 Antibody. The lane on the right is blocked with the synthesized peptide.



Immunohistochemical analysis of paraffin-embedded human tonsil. 1, Antibody was diluted at 1:200(4° overnight). 2, Tris-EDTA,pH9.0 was used for antigen retrieval. 3,Secondary antibody was diluted at 1:200(room temperature, 45min).