

Relaxin Receptor 2 Polyclonal Antibody

Catalog No :	YT4042
Reactivity :	Human;Mouse;Rat
Applications :	WB;IHC
Target :	Relaxin Receptor 2
Fields :	>>Neuroactive ligand-receptor interaction;>>Relaxin signaling pathway
Gene Name :	RXFP2
Protein Name :	Relaxin receptor 2
Human Gene Id :	122042
Human Swiss Prot No :	Q8WXD0
Mouse Gene Id :	140498
Mouse Swiss Prot No :	Q91ZZ5
Immunogen :	The antiserum was produced against synthesized peptide derived from human RXFP2. AA range:113-162
Specificity :	Relaxin Receptor 2 Polyclonal Antibody detects endogenous levels of Relaxin Receptor 2 protein.
Formulation :	Liquid in PBS containing 50% glycerol, 0.5% BSA and 0.02% sodium azide.
Source :	Polyclonal, Rabbit,IgG
Dilution :	WB 1:500-2000;IHC 1:50-300
Purification :	The antibody was affinity-purified from rabbit antiserum by affinity-chromatography using epitope-specific immunogen.
Concentration :	1 mg/ml

Storage Stability : -15°C to -25°C/1 year (Do not lower than -25°C)

Observed Band : 86kD

Cell Pathway : Neuroactive ligand-receptor interaction;

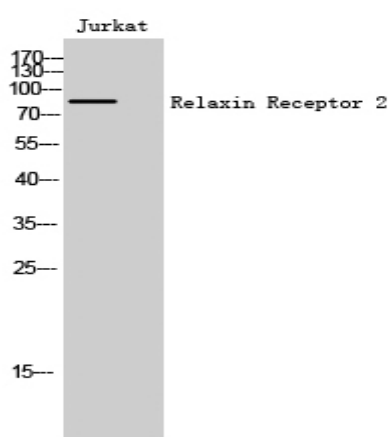
Background : This gene encodes a member of the GPCR (G protein-coupled, 7-transmembrane receptor) family. Mutations in this gene are associated with cryptorchidism. Alternatively spliced transcript variants encoding different isoforms have been found for this gene.[provided by RefSeq, Oct 2009],

Function : caution:It is uncertain whether Met-1 or Met-18 is the initiator.,disease:Defects in RXFP2 are a cause of cryptorchidism [MIM:219050]; also known as impaired testicular descent. It is one of the most frequent congenital abnormalities in humans, involving 2-5% of male births. Cryptorchidism is associated with increased risk of infertility and testicular cancer.,function:Receptor for relaxin. The activity of this receptor is mediated by G proteins leading to stimulation of adenylate cyclase and an increase of cAMP. May also be a receptor for Leydig insulin-like peptide (INSL3).,similarity:Belongs to the G-protein coupled receptor 1 family.,similarity:Contains 1 LDL-receptor class A domain.,similarity:Contains 10 LRR (leucine-rich) repeats.,tissue specificity:Expressed mainly in the brain, kidney, muscle, testis, thyroid, uterus, peripheral blood cells and bone marrow.,

Subcellular Location : Cell membrane; Multi-pass membrane protein.

Expression : Expressed mainly in the brain, kidney, muscle, testis, thyroid, uterus, peripheral blood cells and bone marrow.

Products Images



Western Blot analysis of Jurkat cells using Relaxin Receptor 2 Polyclonal Antibody

