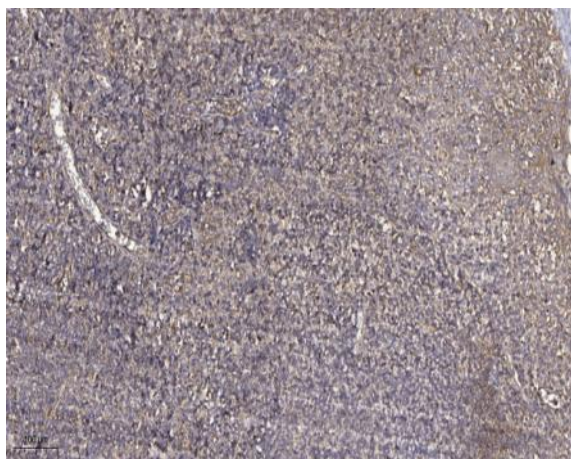


PPP1R2P3 Polyclonal Antibody

Catalog No :	YT3839
Reactivity :	Human;Rat;Mouse;
Applications :	IHC;IF;ELISA
Target :	PPP1R2P3
Gene Name :	PPP1R2P3
Protein Name :	Putative protein phosphatase inhibitor 2-like protein 3
Human Gene Id :	153743
Human Swiss Prot No :	Q6NXS1
Immunogen :	Synthesized peptide derived from PPP1R2P3 . at AA range: 40-120
Specificity :	PPP1R2P3 Polyclonal Antibody detects endogenous levels of PPP1R2P3 protein.
Formulation :	Liquid in PBS containing 50% glycerol, 0.5% BSA and 0.02% sodium azide.
Source :	Polyclonal, Rabbit,IgG
Dilution :	IHC 1:100 - 1:300. ELISA: 1:40000.. IF 1:50-200
Purification :	The antibody was affinity-purified from rabbit antiserum by affinity-chromatography using epitope-specific immunogen.
Concentration :	1 mg/ml
Storage Stability :	-15°C to -25°C/1 year(Do not lower than -25°C)
Molecularweight :	23kD
Background :	caution:Could be the product of a pseudogene.,function:Inhibitor of protein-phosphatase 1.,similarity:Belongs to the protein phosphatase inhibitor 2 family.,

Function :	<u>caution:Could be the product of a pseudogene.,function:Inhibitor of protein-phosphatase 1.,similarity:Belongs to the protein phosphatase inhibitor 2 family.,</u>
Subcellular Location :	<u>protein phosphatase type 1 complex,</u>
Expression :	<u>Only detected in spermatozoa, both heads and tails.</u>

Products Images



Immunohistochemical analysis of paraffin-embedded human tonsil. 1, Antibody was diluted at 1:200(4 ° overnight). 2, Tris-EDTA,pH9.0 was used for antigen retrieval. 3,Secondary antibody was diluted at 1:200(room temperature, 30min).