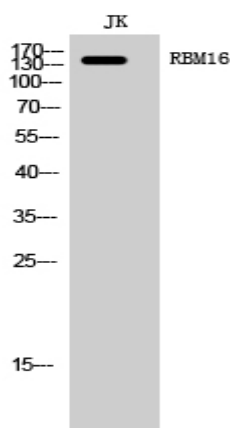


RBM16 Polyclonal Antibody

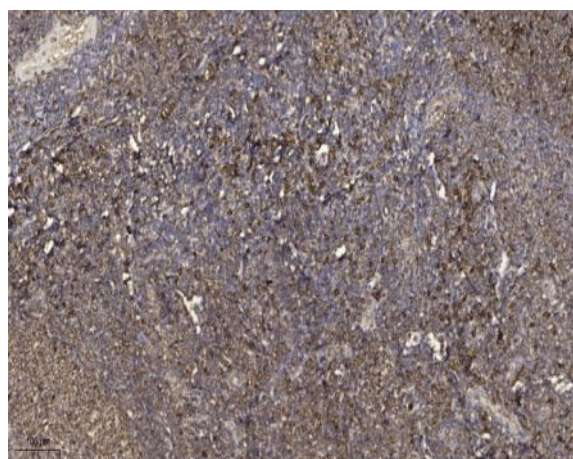
Catalog No :	YT4026
Reactivity :	Human;Mouse;Rat
Applications :	WB;IHC
Target :	RBM16
Gene Name :	SCAF8
Protein Name :	Protein SCAF8
Human Gene Id :	22828
Human Swiss Prot No :	Q9UPN6
Mouse Gene Id :	106583
Mouse Swiss Prot No :	Q6DID3
Rat Gene Id :	245926
Rat Swiss Prot No :	Q63623
Immunogen :	Synthesized peptide derived from RBM16 . at AA range: 550-630
Specificity :	RBM16 Polyclonal Antibody detects endogenous levels of RBM16 protein.
Formulation :	Liquid in PBS containing 50% glycerol, 0.5% BSA and 0.02% sodium azide.
Source :	Polyclonal, Rabbit,IgG
Dilution :	WB 1:500-2000;IHC 1:50-300
Purification :	The antibody was affinity-purified from rabbit antiserum by affinity-chromatography using epitope-specific immunogen.

Concentration :	1 mg/ml
Storage Stability :	-15°C to -25°C/1 year(Do not lower than -25°C)
Observed Band :	140kD
Background :	PTM:Phosphorylated upon DNA damage, probably by ATM or ATR.,similarity:Contains 1 CID domain.,similarity:Contains 1 RRM (RNA recognition motif) domain.,
Function :	PTM:Phosphorylated upon DNA damage, probably by ATM or ATR.,similarity:Contains 1 CID domain.,similarity:Contains 1 RRM (RNA recognition motif) domain.,
Subcellular Location :	Nucleus . Nucleus matrix . Detected in granular nuclear foci which correspond to sites of active transcription. .
Expression :	Brain,Epithelium,Testis,Thyroid gland,Uterus,

Products Images



Western Blot analysis of JK cells using RBM16 Polyclonal Antibody cells nucleus extracted by Minute TM Cytoplasmic and Nuclear Fractionation kit (SC-003, Inventbiotech, MN, USA).



Immunohistochemical analysis of paraffin-embedded human tonsil. 1, Antibody was diluted at 1:200(4° overnight). 2, Tris-EDTA,pH9.0 was used for antigen retrieval. 3,Secondary antibody was diluted at 1:200(room temperature, 45min).