

Rabr Polyclonal Antibody

Catalog No :	YT3951
Reactivity :	Human;Mouse
Applications :	WB;ELISA;IHC
Target :	Rabr
Gene Name :	AGFG2
Protein Name :	Arf-GAP domain and FG repeat-containing protein 2
Human Gene Id :	3268
Human Swiss Prot No :	O95081
Mouse Gene Id :	231801
Mouse Swiss Prot No :	Q80WC7
Immunogen :	The antiserum was produced against synthesized peptide derived from human AGFG2. AA range:91-140
Specificity :	Rabr Polyclonal Antibody detects endogenous levels of Rabr protein.
Formulation :	Liquid in PBS containing 50% glycerol, 0.5% BSA and 0.02% sodium azide.
Source :	Polyclonal, Rabbit,IgG
Dilution :	WB 1:500-2000;IHC 1:50-300; ELISA 2000-20000
Purification :	The antibody was affinity-purified from rabbit antiserum by affinity-chromatography using epitope-specific immunogen.
Concentration :	1 mg/ml
Storage Stability :	-15°C to -25°C/1 year(Do not lower than -25°C)

Observed Band : 49kD

Background : ArfGAP with FG repeats 2(AGFG2) Homo sapiens This gene is a member of the HIV-1 Rev binding protein (HRB) family and encodes a protein with one Arf-GAP zinc finger domain, several phe-gly (FG) motifs, and four asn-pro-phe (NPF) motifs. This protein interacts with Eps15 homology (EH) domains and plays a role in the Rev export pathway, which mediates the nucleocytoplasmic transfer of proteins and RNAs. Alternatively spliced transcript variants have been described, but their biological validity has not been determined. [provided by RefSeq, Feb 2013],

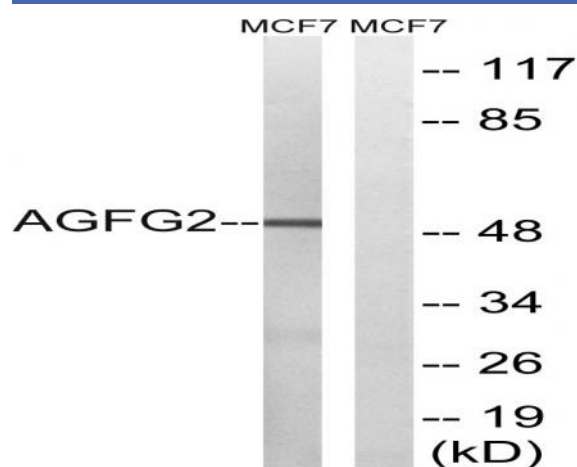
Function : domain:Contains FG repeats and 4 N-P-F repeats.,similarity:Contains 1 Arf-GAP domain.,subunit:Interacts with EPS15R.,

Subcellular Location : membrane,

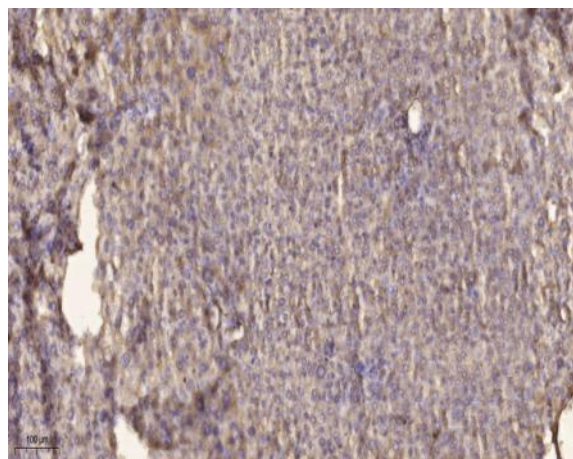
Location :

Expression : Brain,Kidney,Placenta,

Products Images



Western blot analysis of lysates from MCF-7 cells, using AGFG2 Antibody. The lane on the right is blocked with the synthesized peptide.



Immunohistochemical analysis of paraffin-embedded human liver cancer. 1, Antibody was diluted at 1:200(4° overnight). 2, Tris-EDTA,pH9.0 was used for antigen retrieval. 3,Secondary antibody was diluted at 1:200(room temperature, 45min).