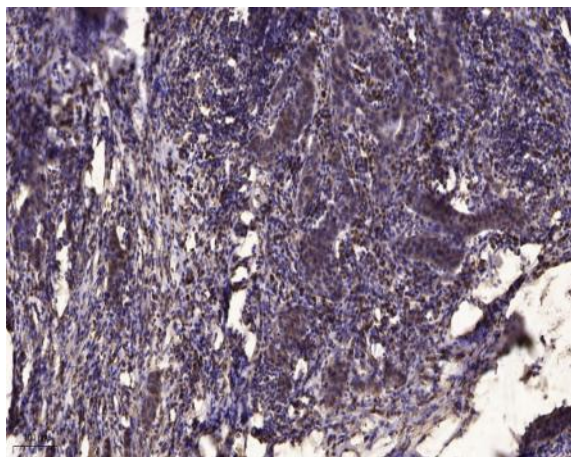


## PITPα Polyclonal Antibody

<b>Catalog No :</b>	YT3737
<b>Reactivity :</b>	Human;Mouse;Rat
<b>Applications :</b>	IHC;IF;ELISA
<b>Target :</b>	PITPα
<b>Gene Name :</b>	PITPNA
<b>Protein Name :</b>	Phosphatidylinositol transfer protein alpha isoform
<b>Human Gene Id :</b>	5306
<b>Human Swiss Prot No :</b>	Q00169
<b>Mouse Gene Id :</b>	18738
<b>Mouse Swiss Prot No :</b>	P53810
<b>Rat Gene Id :</b>	29525
<b>Rat Swiss Prot No :</b>	P16446
<b>Immunogen :</b>	Synthesized peptide derived from PITPα . at AA range: 160-240
<b>Specificity :</b>	PITPα Polyclonal Antibody detects endogenous levels of PITPα protein.
<b>Formulation :</b>	Liquid in PBS containing 50% glycerol, 0.5% BSA and 0.02% sodium azide.
<b>Source :</b>	Polyclonal, Rabbit,IgG
<b>Dilution :</b>	IHC 1:100 - 1:300. ELISA: 1:10000.. IF 1:50-200
<b>Purification :</b>	The antibody was affinity-purified from rabbit antiserum by affinity-chromatography using epitope-specific immunogen.

<b>Concentration :</b>	1 mg/ml
<b>Storage Stability :</b>	-15°C to -25°C/1 year(Do not lower than -25°C)
<b>Molecularweight :</b>	32kD
<b>Background :</b>	This gene encodes a member of a family of lipid-binding proteins that transfer molecules of phosphatidylinositol or phosphatidylcholine between membrane surfaces. The protein is implicated in phospholipase C signaling and in the production of phosphatidylinositol 3,4,5-trisphosphate (PIP3) by phosphoinositide-3-kinase.[provided by RefSeq, Sep 2009],
<b>Function :</b>	function:Catalyzes the transfer of PtdIns and phosphatidylcholine between membranes.,similarity:Belongs to the PtdIns transfer protein family. Class I subfamily.,tissue specificity:Expressed in a wide range of tissues.,
<b>Subcellular Location :</b>	Cytoplasm . Nucleus .
<b>Expression :</b>	Brain,Cajal-Retzius cell,Lung,Ovary,Testis,

## Products Images



Immunohistochemical analysis of paraffin-embedded human Breast cancer. 1, Antibody was diluted at 1:200(4° overnight). 2, Tris-EDTA,pH9.0 was used for antigen retrieval. 3,Secondary antibody was diluted at 1:200(room temperature, 45min).