

PHF1 Polyclonal Antibody

Catalog No :	YT3697
Reactivity :	Human;Mouse;Rat
Applications :	WB;IHC;IF;ELISA
Target :	PHF1
Gene Name :	PHF1
Protein Name :	PHD finger protein 1
Human Gene Id :	5252
Human Swiss Prot No :	O43189
Mouse Gene Id :	21652
Mouse Swiss Prot No :	Q9Z1B8
Immunogen :	The antiserum was produced against synthesized peptide derived from human PHF1. AA range:345-394
Specificity :	PHF1 Polyclonal Antibody detects endogenous levels of PHF1 protein.
Formulation :	Liquid in PBS containing 50% glycerol, 0.5% BSA and 0.02% sodium azide.
Source :	Polyclonal, Rabbit,IgG
Dilution :	WB 1:500 - 1:2000. IHC 1:100 - 1:300. ELISA: 1:10000.. IF 1:50-200
Purification :	The antibody was affinity-purified from rabbit antiserum by affinity-chromatography using epitope-specific immunogen.
Concentration :	1 mg/ml
Storage Stability :	-15°C to -25°C/1 year(Do not lower than -25°C)

Observed Band : 62kD

Background : This gene encodes a Polycomb group protein. The protein is a component of a histone H3 lysine-27 (H3K27)-specific methyltransferase complex, and functions in transcriptional repression of homeotic genes. The protein is also recruited to double-strand breaks, and reduced protein levels results in X-ray sensitivity and increased homologous recombination. Multiple transcript variants encoding different isoforms have been found for this gene. [provided by RefSeq, May 2009],

Function : function:Transcriptional repressor. May promote methylation of histone H3 on 'Lys-27' by the PRC2/EED-EZH2 complex.,similarity:Contains 2 PHD-type zinc fingers.,subcellular location:Localizes specifically to the promoters of numerous target genes.,subunit:Interacts with CHMP1 (By similarity). Interacts with the PRC2 complex.,tissue specificity:Highest levels in heart, skeletal muscle, and pancreas, lower levels in brain, placenta, lung, liver and kidney.,

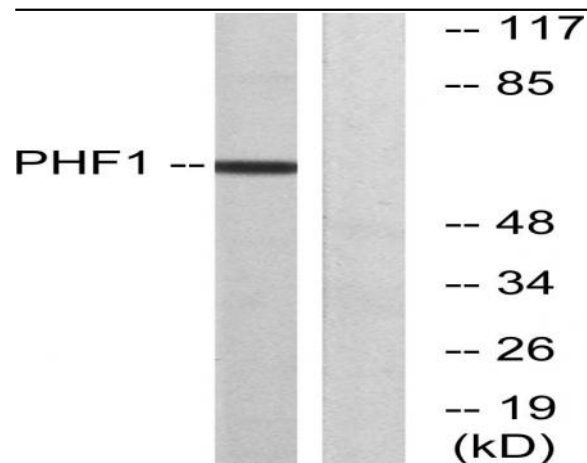
Subcellular Location : Nucleus. Cytoplasm, cytoskeleton, microtubule organizing center, centrosome. Localizes specifically to the promoters of numerous target genes. Localizes to double-strand breaks (DSBs) sites following DNA damage. Co-localizes with NEK6 in the centrosome.

Expression : Highest levels in heart, skeletal muscle, and pancreas, lower levels in brain, placenta, lung, liver and kidney.

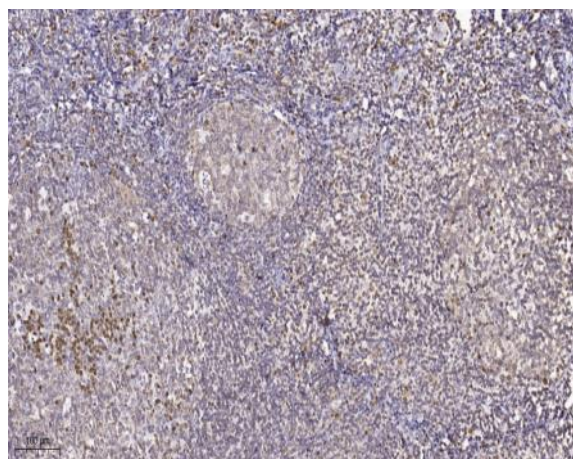
Products Images



Western Blot analysis of various cells using PHF1 Polyclonal Antibody cells nucleus extracted by Minute TM Cytoplasmic and Nuclear Fractionation kit (SC-003, Invent biotech, MN, USA).



Western blot analysis of lysates from HeLa cells, using PHF1 Antibody. The lane on the right is blocked with the synthesized peptide.



Immunohistochemical analysis of paraffin-embedded human tonsil. 1, Tris-EDTA, pH 9.0 was used for antigen retrieval. 2 Antibody was diluted at 1:200 (4° overnight). 3, Secondary antibody was diluted at 1:200 (room temperature, 45 min).