

POLR3H Polyclonal Antibody

Catalog No :	YT3818
Reactivity :	Human;Mouse;Rat
Applications :	WB;IHC;IF;ELISA
Target :	POLR3H
Fields :	>>RNA polymerase;>>Cytosolic DNA-sensing pathway
Gene Name :	POLR3H
Protein Name :	DNA-directed RNA polymerase III subunit RPC8
Human Gene Id :	171568
Human Swiss Prot No :	Q9Y535
Mouse Gene Id :	78929
Mouse Swiss Prot No :	Q9D2C6
Immunogen :	The antiserum was produced against synthesized peptide derived from human RPC8. AA range:151-200
Specificity :	POLR3H Polyclonal Antibody detects endogenous levels of POLR3H protein.
Formulation :	Liquid in PBS containing 50% glycerol, 0.5% BSA and 0.02% sodium azide.
Source :	Polyclonal, Rabbit,IgG
Dilution :	WB 1:500 - 1:2000. IHC 1:100 - 1:300. ELISA: 1:40000.. IF 1:50-200
Purification :	The antibody was affinity-purified from rabbit antiserum by affinity-chromatography using epitope-specific immunogen.
Concentration :	1 mg/ml

Storage Stability : -15°C to -25°C/1 year (Do not lower than -25°C)

Observed Band : 23kD

Cell Pathway : Purine metabolism; Pyrimidine metabolism; RNA polymerase; Cytosolic DNA-sensing pathway;

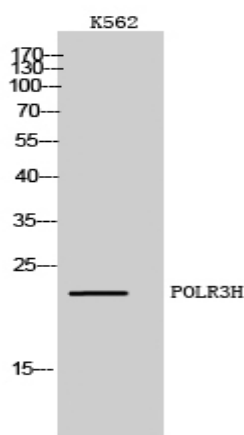
Background : function: DNA-dependent RNA polymerase catalyzes the transcription of DNA into RNA using the four ribonucleoside triphosphates as substrates. Specific peripheric component of RNA polymerase III which synthesizes small RNAs, such as 5S rRNA and tRNAs., similarity: Belongs to the eukaryotic RPB7/RPC8 RNA polymerase subunit family., subunit: Component of the RNA polymerase III (Pol III) complex consisting of 17 subunits (By similarity). Interacts with CRCP/RPC9. POLR3H/RPC8 and CRCP/RPC9 probably form a Pol III subcomplex.,

Function : function: DNA-dependent RNA polymerase catalyzes the transcription of DNA into RNA using the four ribonucleoside triphosphates as substrates. Specific peripheric component of RNA polymerase III which synthesizes small RNAs, such as 5S rRNA and tRNAs., similarity: Belongs to the eukaryotic RPB7/RPC8 RNA polymerase subunit family., subunit: Component of the RNA polymerase III (Pol III) complex consisting of 17 subunits (By similarity). Interacts with CRCP/RPC9. POLR3H/RPC8 and CRCP/RPC9 probably form a Pol III subcomplex.,

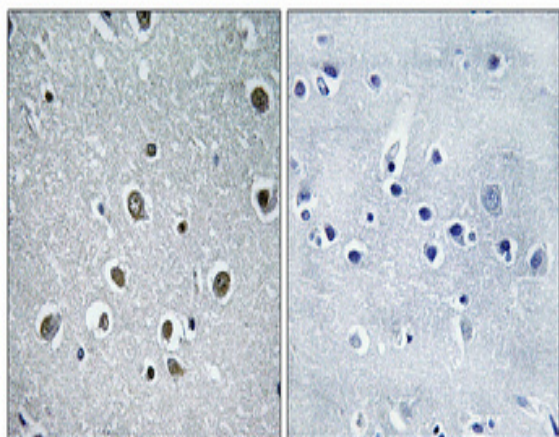
Subcellular Location : Nucleus.

Expression : Adrenal gland, Brain, Pituitary,

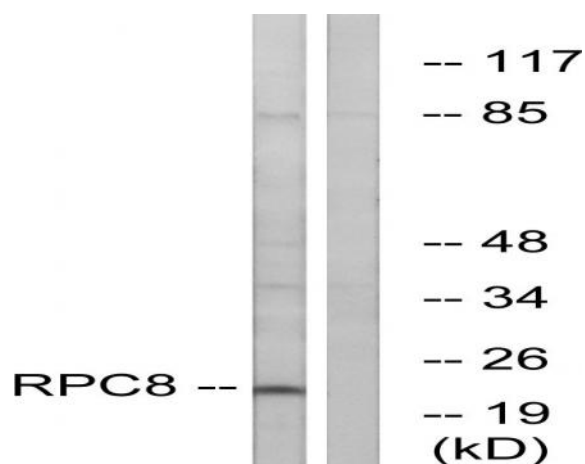
Products Images



Western Blot analysis of K562 cells using POLR3H Polyclonal Antibody diluted at 1:1000 cells nucleus extracted by Minute TM Cytoplasmic and Nuclear Fractionation kit (SC-003, Invent biotech, MN, USA).



Immunohistochemical analysis of paraffin-embedded Human brain. Antibody was diluted at 1:100(4° overnight). High-pressure and temperature Tris-EDTA,pH8.0 was used for antigen retrieval. Negative contrl (right) obtained from antibody was pre-absorbed by immunogen peptide.



Western blot analysis of lysates from K562 cells, using RPC8 Antibody. The lane on the right is blocked with the synthesized peptide.