

PLK-5 Polyclonal Antibody

Catalog No :	YT3798
Reactivity :	Human;Rat;Mouse;
Applications :	WB;IHC
Target :	PLK-5
Gene Name :	PLK5
Protein Name :	Inactive serine/threonine-protein kinase PLK5
Human Gene Id :	126520
Human Swiss Prot No :	Q496M5
Mouse Swiss Prot No :	Q4FZD7
Immunogen :	The antiserum was produced against synthesized peptide derived from human PLK5. AA range:131-180
Specificity :	PLK-5 Polyclonal Antibody detects endogenous levels of PLK-5 protein.
Formulation :	Liquid in PBS containing 50% glycerol, 0.5% BSA and 0.02% sodium azide.
Source :	Polyclonal, Rabbit,IgG
Dilution :	WB 1:500-2000;IHC 1:50-300
Purification :	The antibody was affinity-purified from rabbit antiserum by affinity-chromatography using epitope-specific immunogen.
Concentration :	1 mg/ml
Storage Stability :	-15°C to -25°C/1 year(Do not lower than -25°C)
Observed Band :	55kD

Background :

PLK5 (Polo Like Kinase 5) is a Protein Coding gene. Gene Ontology (GO) annotations related to PLK5 include transferase activity, transferring phosphorus-containing groups and protein kinase activity. An important paralog of PLK5 is PLK4.

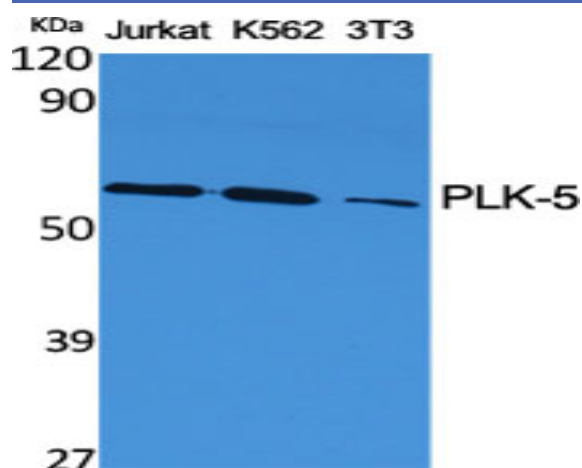
Subcellular Location :

Nucleus, nucleolus . Cytoplasm .

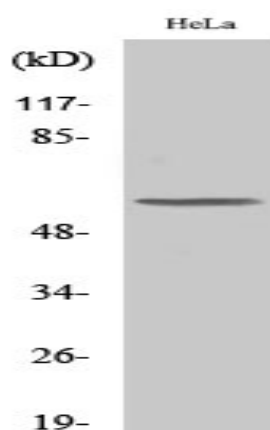
Expression :

Expressed in the brain, neurons and glial cells. Also expressed in highly differentiated cells, such as the serous acini in the parotid gland, distal and proximal tubules of the kidney, tubules of the seminal gland, Kupffer cells and some hepatocytes in the liver, and some cells in the germinal center of lymph nodes (at protein level).

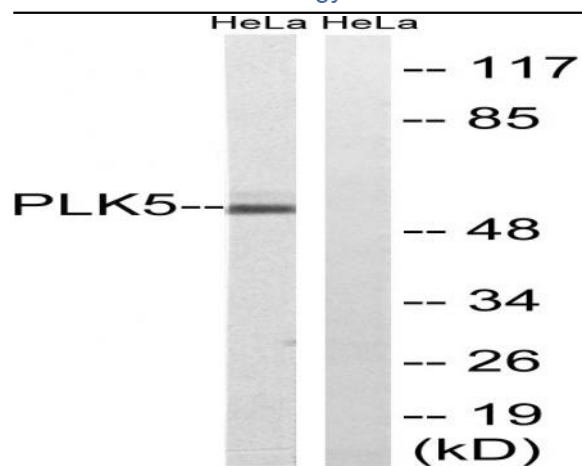
Products Images



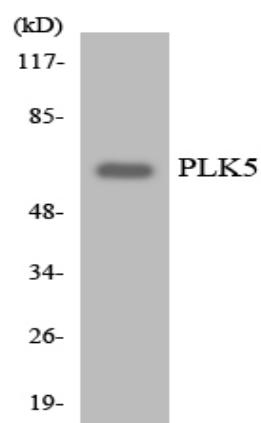
Western Blot analysis of various cells using PLK-5 Polyclonal Antibody



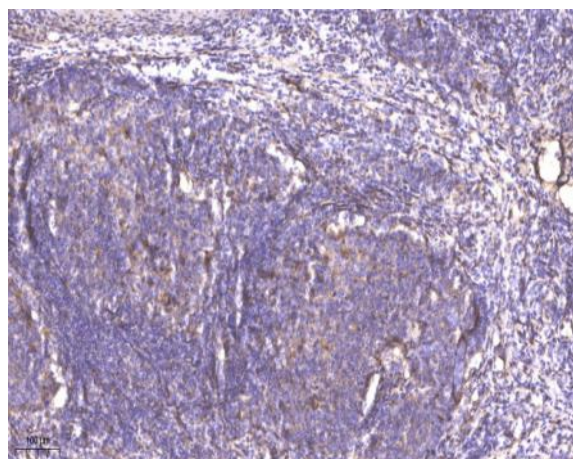
Western Blot analysis of COLO205 cells using PLK-5 Polyclonal Antibody



Western blot analysis of lysates from HeLa cells, using PLK5 Antibody. The lane on the right is blocked with the synthesized peptide.



Western blot analysis of the lysates from HeLa cells using PLK5 antibody.



Immunohistochemical analysis of paraffin-embedded human cervical carcinoma. 1, Antibody was diluted at 1:200(4° overnight). 2, Tris-EDTA,pH9.0 was used for antigen retrieval. 3,Secondary antibody was diluted at 1:200(room temperature, 45min).