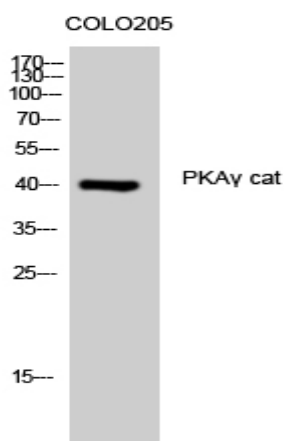


PKA γ cat Polyclonal Antibody

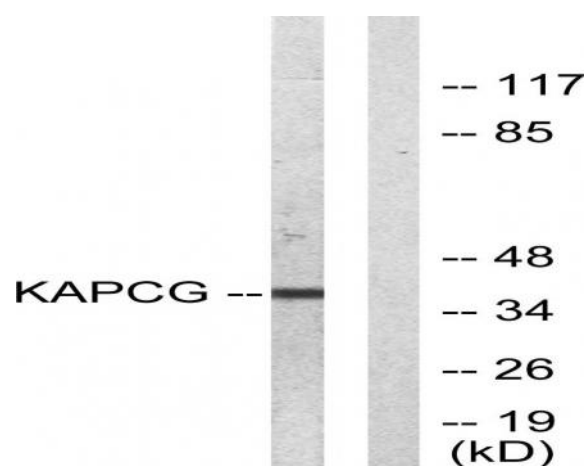
Catalog No :	YT3751
Reactivity :	Human;Rat;Mouse;
Applications :	WB;IHC;IF;ELISA
Target :	PKA γ cat
Fields :	>>Endocrine resistance;>>MAPK signaling pathway;>>Ras signaling pathway;>>Calcium signaling pathway;>>cAMP signaling pathway;>>Chemokine signaling pathway;>>Oocyte meiosis;>>Autophagy - animal;>>Longevity regulating pathway;>>Longevity regulating pathway - multiple species;>>Adrenergic signaling in cardiomyocytes;>>Vascular smooth muscle contraction;>>Wnt signaling pathway;>>Hedgehog signaling pathway;>>Apelin signaling pathway;>>Tight junction;>>Gap junction;>>Platelet activation;>>Circadian entrainment;>>Thermogenesis;>>Long-term potentiation;>>Retrograde endocannabinoid signaling;>>Glutamatergic synapse;>>Cholinergic synapse;>>Serotonergic synapse;>>GABAergic synapse;>>Dopaminergic synapse;>>Olfactory transduction;>>Taste transduction;>>Inflammatory mediator regulation of TRP channels;>>Insulin signaling pathway;>>Insulin secretion;>>GnRH signaling pathway;>>Ovarian steroidogenesis;>>Progesterone-mediated oocyte maturation;>>Estrogen signaling pathway;>>Melanogenesis;>>Thyroid hormo
Gene Name :	PRKACG
Protein Name :	cAMP-dependent protein kinase catalytic subunit gamma
Human Gene Id :	5568
Human Swiss Prot No :	P22612
Immunogen :	The antiserum was produced against synthesized peptide derived from human KAPCG. AA range:1-50
Specificity :	PKA γ cat Polyclonal Antibody detects endogenous levels of PKA γ cat protein.
Formulation :	Liquid in PBS containing 50% glycerol, 0.5% BSA and 0.02% sodium azide.
Source :	Polyclonal, Rabbit,IgG

Dilution :	WB 1:500 - 1:2000. IHC 1:100 - 1:300. ELISA: 1:10000.. IF 1:50-200
Purification :	The antibody was affinity-purified from rabbit antiserum by affinity-chromatography using epitope-specific immunogen.
Concentration :	1 mg/ml
Storage Stability :	-15 °C to -25 °C/1 year(Do not lower than -25 °C)
Observed Band :	40kD
Cell Pathway :	MAPK_ERK_Growth;MAPK_G_Protein;Calcium;Chemokine;Oocyte meiosis;Apoptosis_Inhibition;Apoptosis_Mitochondrial;Apoptosis_Overview;Vascular smooth muscle contraction;WNT;WNT-T CELLHedgehog;Gap junction;L
Background :	Cyclic AMP-dependent protein kinase (PKA) consists of two catalytic subunits and a regulatory subunit dimer. This gene encodes the gamma form of its catalytic subunit. The gene is intronless and is thought to be a retrotransposon derived from the gene for the alpha form of the PKA catalytic subunit. [provided by RefSeq, Jul 2008],
Function :	catalytic activity:ATP + a protein = ADP + a phosphoprotein.,enzyme regulation:Activated by cAMP.,function:Phosphorylates a large number of substrates in the cytoplasm and the nucleus.,similarity:Belongs to the protein kinase superfamily. AGC Ser/Thr protein kinase family. cAMP subfamily.,similarity:Contains 1 AGC-kinase C-terminal domain.,similarity:Contains 1 protein kinase domain.,subunit:A number of inactive tetrameric holoenzymes are produced by the combination of homo- or heterodimers of the different regulatory subunits associated with two catalytic subunits. cAMP causes the dissociation of the inactive holoenzyme into a dimer of regulatory subunits bound to four cAMP and two free monomeric catalytic subunits.,tissue specificity:Testis specific. But important tissues such as brain and ovary have not been analyzed for the content of transcript.,
Subcellular Location :	nucleoplasm,cytosol,ciliary base,
Expression :	Testis specific. But important tissues such as brain and ovary have not been analyzed for the content of transcript.

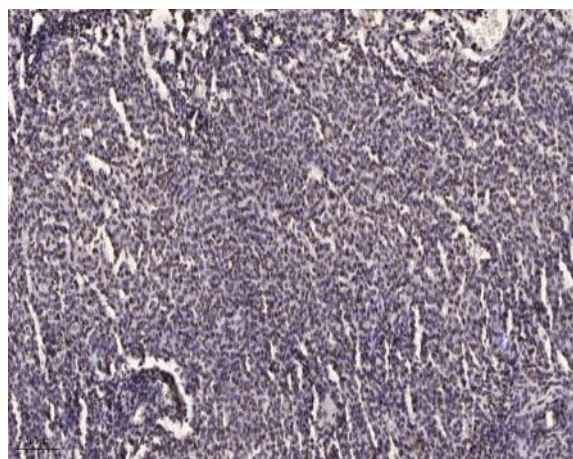
Products Images



Western Blot analysis of COLO205 cells using PKAγ cat Polyclonal Antibody



Western blot analysis of lysates from COLO205 cells, using KAPCG Antibody. The lane on the right is blocked with the synthesized peptide.



Immunohistochemical analysis of paraffin-embedded human brain tumor. 1, Antibody was diluted at 1:200(4° overnight). 2, Tris-EDTA,pH9.0 was used for antigen retrieval. 3,Secondary antibody was diluted at 1:200(room temperature, 45min).