

## PJA2 Polyclonal Antibody

<b>Catalog No :</b>	YT3742
<b>Reactivity :</b>	Human;Rat;Mouse;
<b>Applications :</b>	WB;ELISA;IHC
<b>Target :</b>	PJA2
<b>Gene Name :</b>	PJA2
<b>Protein Name :</b>	E3 ubiquitin-protein ligase Praja-2
<b>Human Gene Id :</b>	9867
<b>Human Swiss Prot No :</b>	O43164
<b>Mouse Swiss Prot No :</b>	Q80U04
<b>Immunogen :</b>	The antiserum was produced against synthesized peptide derived from human PJA2. AA range:141-190
<b>Specificity :</b>	PJA2 Polyclonal Antibody detects endogenous levels of PJA2 protein.
<b>Formulation :</b>	Liquid in PBS containing 50% glycerol, 0.5% BSA and 0.02% sodium azide.
<b>Source :</b>	Polyclonal, Rabbit,IgG
<b>Dilution :</b>	WB 1:500-2000;IHC 1:50-300; ELISA 2000-20000
<b>Purification :</b>	The antibody was affinity-purified from rabbit antiserum by affinity-chromatography using epitope-specific immunogen.
<b>Concentration :</b>	1 mg/ml
<b>Storage Stability :</b>	-15°C to -25°C/1 year(Do not lower than -25°C)
<b>Observed Band :</b>	85kD

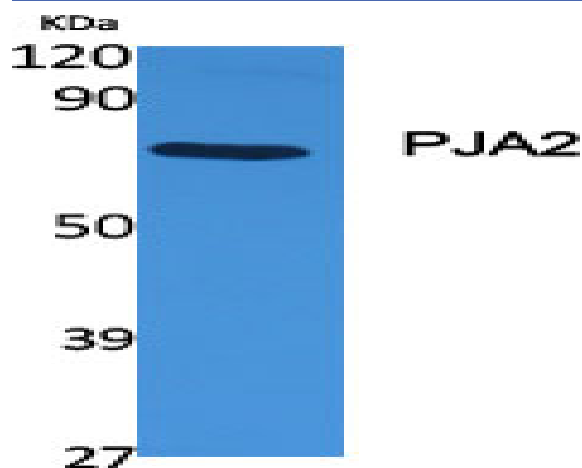
**Background :** function:Has E2-dependent E3 ubiquitin-protein ligase activity.,pathway:Protein modification; protein ubiquitination.,similarity:Contains 1 RING-type zinc finger.,subcellular location:Localizes at the cytoplasmic side of endoplasmic reticulum and Golgi apparatus. Expressed in the postsynaptic density region of synapses.,subunit:Binds ubiquitin-conjugating enzymes (E2s). In vitro, interacts with the ubiquitin-conjugating enzyme, UBE2D2.,

**Function :** function:Has E2-dependent E3 ubiquitin-protein ligase activity.,pathway:Protein modification; protein ubiquitination.,similarity:Contains 1 RING-type zinc finger.,subcellular location:Localizes at the cytoplasmic side of endoplasmic reticulum and Golgi apparatus. Expressed in the postsynaptic density region of synapses.,subunit:Binds ubiquitin-conjugating enzymes (E2s). In vitro, interacts with the ubiquitin-conjugating enzyme, UBE2D2.,

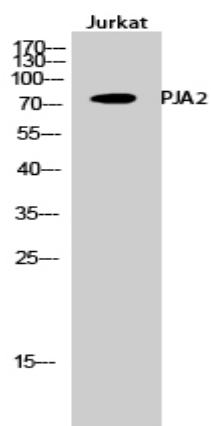
**Subcellular Location :** Cytoplasm . Cell membrane . Endoplasmic reticulum membrane ; Peripheral membrane protein . Golgi apparatus membrane ; Peripheral membrane protein . Cell junction, synapse . Cell junction, synapse, postsynaptic density . Localizes at the cytoplasmic side of endoplasmic reticulum and Golgi apparatus. Expressed in the postsynaptic density region of synapses (By similarity). Colocalizes with PRKAR2A and PRKAR2B in the cytoplasm and the cell membrane. .

**Expression :** Brain,Embryonic kidney,Epithelium,Liver,

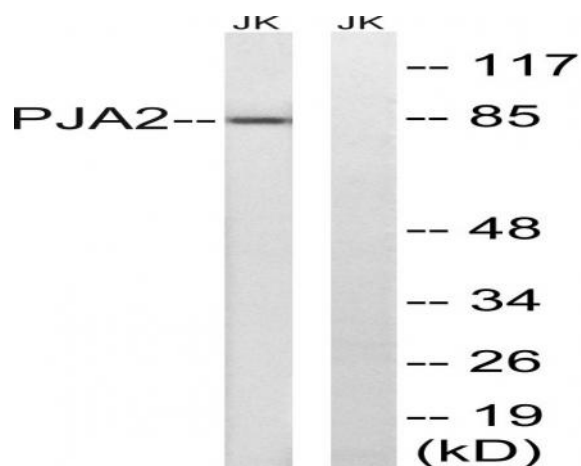
## Products Images



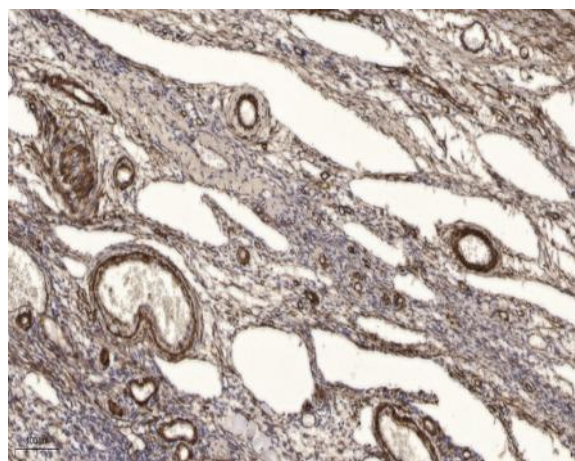
Western Blot analysis of various cells using PJA2 Polyclonal Antibody



Western Blot analysis of Jurkat cells using PJA2 Polyclonal Antibody



Western blot analysis of lysates from Jurkat cells, using PJA2 Antibody. The lane on the right is blocked with the synthesized peptide.



Immunohistochemical analysis of paraffin-embedded human oophoroma. 1, Antibody was diluted at 1:200(4° overnight). 2, Tris-EDTA,pH9.0 was used for antigen retrieval. 3,Secondary antibody was diluted at 1:200(room temperature, 45min).