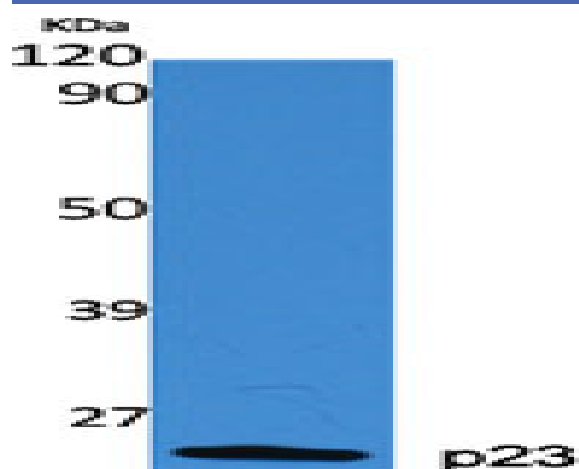


## p23 Polyclonal Antibody

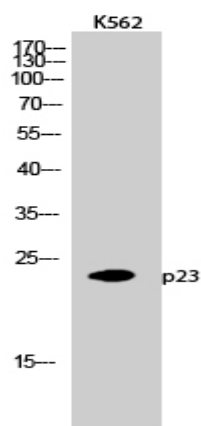
<b>Catalog No :</b>	YT3498
<b>Reactivity :</b>	Human;Mouse;Rat
<b>Applications :</b>	WB;IHC;IF;ELISA
<b>Target :</b>	p23
<b>Fields :</b>	>>Arachidonic acid metabolism;>>Metabolic pathways;>>Chemical carcinogenesis - receptor activation
<b>Gene Name :</b>	PTGES3
<b>Protein Name :</b>	Prostaglandin E synthase 3
<b>Human Gene Id :</b>	10728
<b>Human Swiss Prot No :</b>	Q15185
<b>Mouse Gene Id :</b>	1.00044e+008
<b>Mouse Swiss Prot No :</b>	Q9R0Q7
<b>Rat Gene Id :</b>	362809
<b>Rat Swiss Prot No :</b>	P83868
<b>Immunogen :</b>	The antiserum was produced against synthesized peptide derived from human TEBP. AA range:79-128
<b>Specificity :</b>	p23 Polyclonal Antibody detects endogenous levels of p23 protein.
<b>Formulation :</b>	Liquid in PBS containing 50% glycerol, 0.5% BSA and 0.02% sodium azide.
<b>Source :</b>	Polyclonal, Rabbit,IgG
<b>Dilution :</b>	WB 1:500 - 1:2000. IHC 1:100 - 1:300. ELISA: 1:10000.. IF 1:50-200

<b>Purification :</b>	The antibody was affinity-purified from rabbit antiserum by affinity-chromatography using epitope-specific immunogen.
<b>Concentration :</b>	1 mg/ml
<b>Storage Stability :</b>	-15°C to -25°C/1 year(Do not lower than -25°C)
<b>Observed Band :</b>	24kD
<b>Background :</b>	This gene encodes an enzyme that converts prostaglandin endoperoxide H2 (PGH2) to prostaglandin E2 (PGE2). This protein functions as a co-chaperone with heat shock protein 90 (HSP90), localizing to response elements in DNA and disrupting transcriptional activation complexes. Alternative splicing results in multiple transcript variants. There are multiple pseudogenes of this gene on several different chromosomes. [provided by RefSeq, Feb 2016],
<b>Function :</b>	catalytic activity:(5Z,13E)-(15S)-9-alpha,11-alpha-epidioxy-15-hydroxyprosta-5,13-dienoate = (5Z,13E)-(15S)-11-alpha,15-dihydroxy-9-oxoprosta-5,13-dienoate.,function:Molecular chaperone that localizes to genomic response elements in a hormone-dependent manner and disrupts receptor-mediated transcriptional activation, by promoting disassembly of transcriptional regulatory complexes.,pathway:Lipid metabolism; prostaglandin biosynthesis.,similarity:Belongs to the p23/wos2 family.,similarity:Contains 1 CS domain.,subunit:Binds to telomerase and to the progesterone receptor.,
<b>Subcellular Location :</b>	Cytoplasm .
<b>Expression :</b>	Embryonic kidney,Epithelium,Liver,Lung,Pituitary,Platelet,T-cell,Testis,Uri

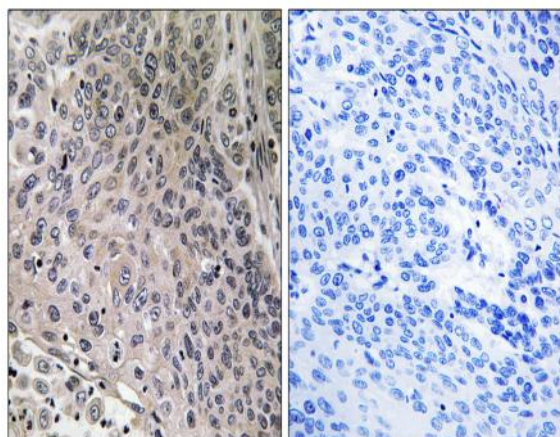
## Products Images



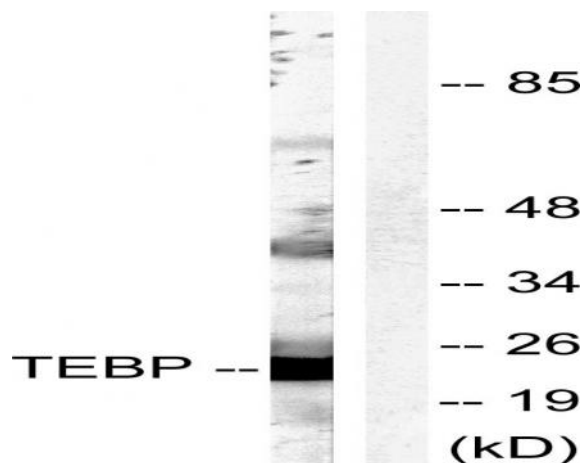
Western Blot analysis of various cells using p23 Polyclonal Antibody diluted at 1:2000



Western Blot analysis of K562 cells using p23 Polyclonal Antibody diluted at 1:2000



Immunohistochemistry analysis of paraffin-embedded human breast carcinoma tissue, using TEBP Antibody. The picture on the right is blocked with the synthesized peptide.



Western blot analysis of lysates from NIH/3T3 cells, treated with EGF 200ng/ml 30', using TEBP Antibody. The lane on the right is blocked with the synthesized peptide.