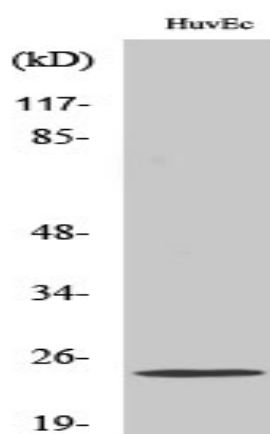


PGRMC2 Polyclonal Antibody

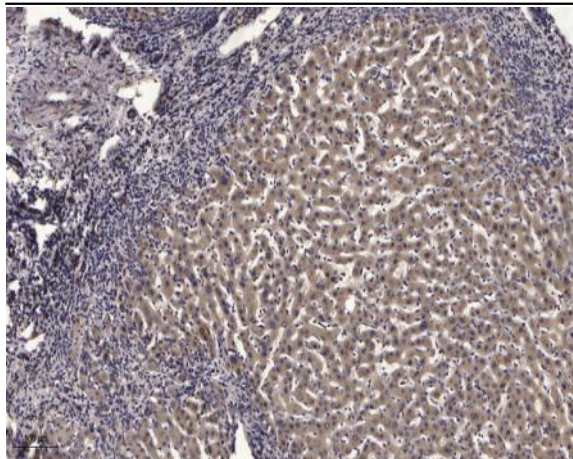
Catalog No :	YT3693
Reactivity :	Human;Mouse;Rat
Applications :	WB;ELISA;IHC
Target :	PGRMC2
Gene Name :	PGRMC2
Protein Name :	Membrane-associated progesterone receptor component 2
Human Gene Id :	10424
Human Swiss Prot No :	O15173
Mouse Gene Id :	70804
Mouse Swiss Prot No :	Q80UU9
Rat Gene Id :	361940
Rat Swiss Prot No :	Q5XIU9
Immunogen :	The antiserum was produced against synthesized peptide derived from human PGRMC2. AA range:174-223
Specificity :	PGRMC2 Polyclonal Antibody detects endogenous levels of PGRMC2 protein.
Formulation :	Liquid in PBS containing 50% glycerol, 0.5% BSA and 0.02% sodium azide.
Source :	Polyclonal, Rabbit,IgG
Dilution :	WB 1:500-2000;IHC 1:50-300; ELISA 2000-20000
Purification :	The antibody was affinity-purified from rabbit antiserum by affinity-chromatography using epitope-specific immunogen.

Concentration :	1 mg/ml
Storage Stability :	-15°C to -25°C/1 year(Do not lower than -25°C)
Observed Band :	25kD
Background :	domain:The cytochrome b5 heme-binding domain lacks the conserved iron-binding His residues at positions 137 and 161.,function:Receptor for steroids .,similarity:Belongs to the cytochrome b5 family. MAPR subfamily.,similarity:Contains 1 cytochrome b5 heme-binding domain.,
Function :	domain:The cytochrome b5 heme-binding domain lacks the conserved iron-binding His residues at positions 137 and 161.,function:Receptor for steroids .,similarity:Belongs to the cytochrome b5 family. MAPR subfamily.,similarity:Contains 1 cytochrome b5 heme-binding domain.,
Subcellular Location :	Membrane ; Single-pass membrane protein . Nucleus envelope . Endoplasmic reticulum .
Expression :	Expressed by endometrial glands and stroma (at protein level).

Products Images



Western Blot analysis of various cells using PGRMC2 Polyclonal Antibody diluted at 1:1000



Immunohistochemical analysis of paraffin-embedded human liver cancer. 1, Antibody was diluted at 1:200(4° overnight). 2, Tris-EDTA,pH9.0 was used for antigen retrieval. 3,Secondary antibody was diluted at 1:200(room temperature, 45min).