

PAI-2 Polyclonal Antibody

Catalog No :	YT3570
Reactivity :	Human;Rat;Mouse;
Applications :	WB;IHC;IF;ELISA
Target :	PAI-2
Fields :	>>Complement and coagulation cascades
Gene Name :	SERPINB2
Protein Name :	Plasminogen activator inhibitor 2
Human Gene Id :	5055
Human Swiss Prot No :	P05120
Mouse Swiss Prot No :	P12388
Immunogen :	The antiserum was produced against synthesized peptide derived from human PAI-2. AA range:258-307
Specificity :	PAI-2 Polyclonal Antibody detects endogenous levels of PAI-2 protein.
Formulation :	Liquid in PBS containing 50% glycerol, 0.5% BSA and 0.02% sodium azide.
Source :	Polyclonal, Rabbit,IgG
Dilution :	WB 1:500 - 1:2000. IHC 1:100 - 1:300. ELISA: 1:40000.. IF 1:50-200
Purification :	The antibody was affinity-purified from rabbit antiserum by affinity-chromatography using epitope-specific immunogen.
Concentration :	1 mg/ml
Storage Stability :	-15°C to -25°C/1 year(Do not lower than -25°C)

Observed Band : 46kD

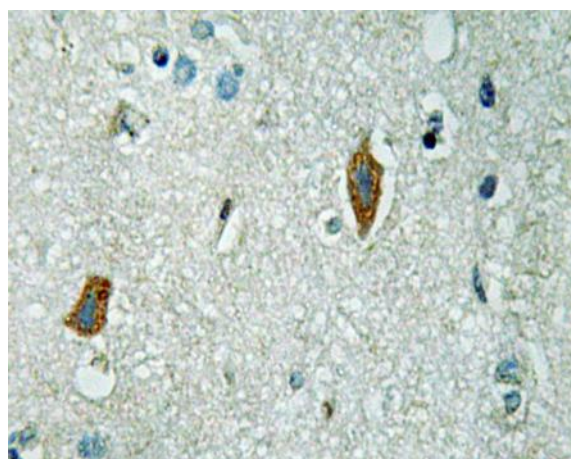
Background : function:Inhibits urokinase-type plasminogen activator. The monocyte derived PAI-2 is distinct from the endothelial cell-derived PAI-1.,PTM:The signal sequence is not cleaved.,similarity:Belongs to the serpin family. Ov-serpin subfamily.,

Function : function:Inhibits urokinase-type plasminogen activator. The monocyte derived PAI-2 is distinct from the endothelial cell-derived PAI-1.,PTM:The signal sequence is not cleaved.,similarity:Belongs to the serpin family. Ov-serpin subfamily.,

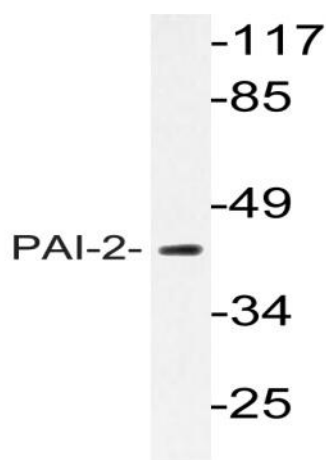
Subcellular Location : Cytoplasm. Secreted, extracellular space.

Expression : Brain,Monocyte,Placenta,

Products Images



Immunohistochemistry analysis of PAI-2 antibody in paraffin-embedded human brain tissue.



Western blot analysis of lysate from MCF-7 cells, using PAI-2 antibody.