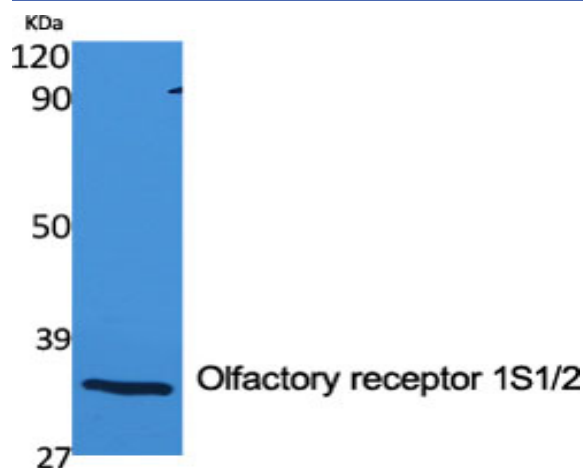


Olfactory receptor 1S1/2 Polyclonal Antibody

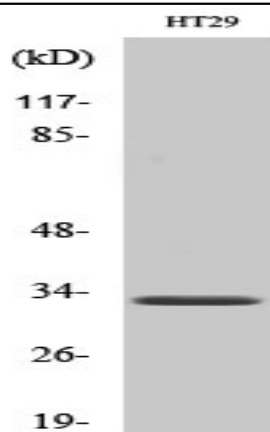
Catalog No :	YT3287
Reactivity :	Human;Rat;Mouse;
Applications :	WB;IF;ELISA
Target :	Olfactory receptor 1S1/2
Fields :	>>Olfactory transduction
Gene Name :	OR1S1/OR1S2
Protein Name :	Olfactory receptor 1S1/2
Human Gene Id :	219958/219959
Human Swiss Prot No :	Q8NGQ3/Q8NH92
Immunogen :	The antiserum was produced against synthesized peptide derived from human OR1S1/1S2. AA range:241-290
Specificity :	Olfactory receptor 1S1/2 Polyclonal Antibody detects endogenous levels of Olfactory receptor 1S1/2 protein.
Formulation :	Liquid in PBS containing 50% glycerol, 0.5% BSA and 0.02% sodium azide.
Source :	Polyclonal, Rabbit,IgG
Dilution :	WB 1:500 - 1:2000. IF 1:200 - 1:1000. ELISA: 1:20000. Not yet tested in other applications.
Purification :	The antibody was affinity-purified from rabbit antiserum by affinity-chromatography using epitope-specific immunogen.
Concentration :	1 mg/ml
Storage Stability :	-15°C to -25°C/1 year(Do not lower than -25°C)

Observed Band :	33kD
Cell Pathway :	Olfactory transduction;
Background :	<p>olfactory receptor family 1 subfamily S member 2(OR1S2) Homo sapiens Olfactory receptors interact with odorant molecules in the nose, to initiate a neuronal response that triggers the perception of a smell. The olfactory receptor proteins are members of a large family of G-protein-coupled receptors (GPCR) arising from single coding-exon genes. Olfactory receptors share a 7-transmembrane domain structure with many neurotransmitter and hormone receptors and are responsible for the recognition and G protein-mediated transduction of odorant signals. The olfactory receptor gene family is the largest in the genome. The nomenclature assigned to the olfactory receptor genes and proteins for this organism is independent of other organisms. [provided by RefSeq, Jul 2008],</p>
Function :	<p>caution:It is uncertain whether Met-1 or Met-14 is the initiator.,function:Odorant receptor .,similarity:Belongs to the G-protein coupled receptor 1 family.,</p>
Subcellular Location :	Cell membrane; Multi-pass membrane protein.

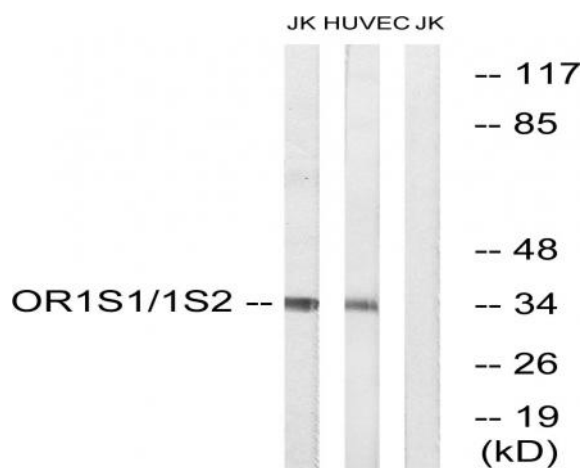
Products Images



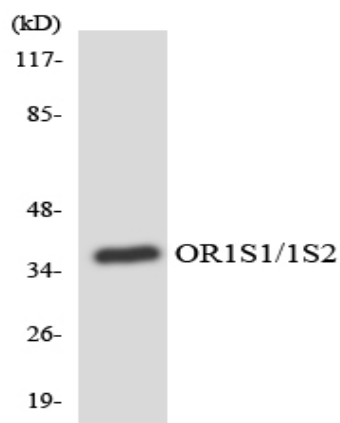
Western Blot analysis of various cells using Olfactory receptor 1S1/2 Polyclonal Antibody



Western Blot analysis of HuvEc cells using Olfactory receptor 1S1/2 Polyclonal Antibody



Western blot analysis of lysates from Jurkat and HUVEC cells, using OR1S1/1S2 Antibody. The lane on the right is blocked with the synthesized peptide.



Western blot analysis of the lysates from HUVEC cells using OR1S1/1S2 antibody.