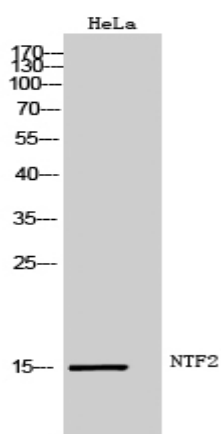


## NTF2 Polyclonal Antibody

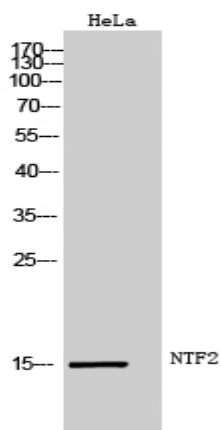
<b>Catalog No :</b>	YT3201
<b>Reactivity :</b>	Human;Mouse;Rat
<b>Applications :</b>	WB;IHC;IF;ELISA
<b>Target :</b>	NTF2
<b>Gene Name :</b>	NUTF2
<b>Protein Name :</b>	Nuclear transport factor 2
<b>Human Gene Id :</b>	10204
<b>Human Swiss Prot No :</b>	P61970
<b>Mouse Gene Id :</b>	621832
<b>Mouse Swiss Prot No :</b>	P61971
<b>Rat Gene Id :</b>	291981
<b>Rat Swiss Prot No :</b>	P61972
<b>Immunogen :</b>	The antiserum was produced against synthesized peptide derived from human NUTF2. AA range:67-116
<b>Specificity :</b>	NTF2 Polyclonal Antibody detects endogenous levels of NTF2 protein.
<b>Formulation :</b>	Liquid in PBS containing 50% glycerol, 0.5% BSA and 0.02% sodium azide.
<b>Source :</b>	Polyclonal, Rabbit,IgG
<b>Dilution :</b>	WB 1:500 - 1:2000. IHC 1:100 - 1:300. ELISA: 1:20000.. IF 1:50-200
<b>Purification :</b>	The antibody was affinity-purified from rabbit antiserum by affinity-chromatography using epitope-specific immunogen.

<b>Concentration :</b>	1 mg/ml
<b>Storage Stability :</b>	-15°C to -25°C/1 year(Do not lower than -25°C)
<b>Observed Band :</b>	15kD
<b>Background :</b>	This gene encodes a cytosolic factor that facilitates protein transport into the nucleus. The encoded protein is required for nuclear import of the small Ras-like GTPase, Ran which is involved in numerous cellular processes. This protein also interacts with the nuclear pore complex glycoprotein p62. [provided by RefSeq, Apr 2016],
<b>Function :</b>	function:Facilitates protein transport into the nucleus. Interacts with the nucleoporin p62 and with Ran. Acts at a relatively late stage of nuclear protein import, subsequent to the initial docking of nuclear import ligand at the nuclear envelope. Could be part of a multicomponent system of cytosolic factors that assemble at the pore complex during nuclear import.,similarity:Contains 1 NTF2 domain.,subunit:Homodimer.,
<b>Subcellular Location :</b>	Cytoplasm, cytosol . Nucleus outer membrane . Nucleus, nuclear pore complex . Nucleus inner membrane . Nucleus, nucleoplasm . At steady state it is essentially nucleoplasmic, enriched in nucleoplasmic foci. .
<b>Expression :</b>	Lung,

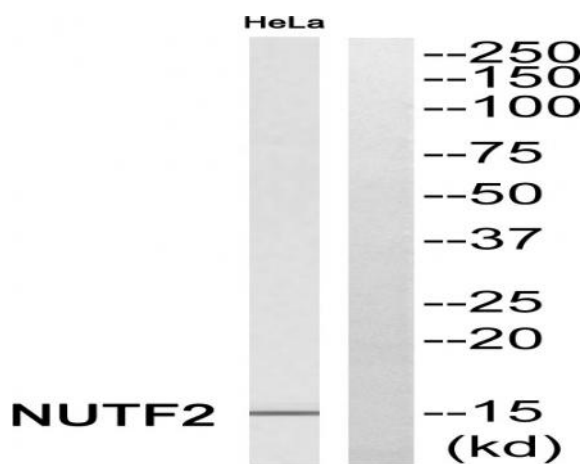
## Products Images



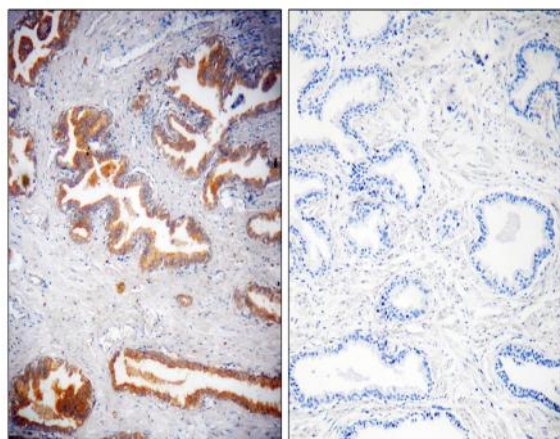
Western Blot analysis of HeLa cells using NTF2 Polyclonal Antibody



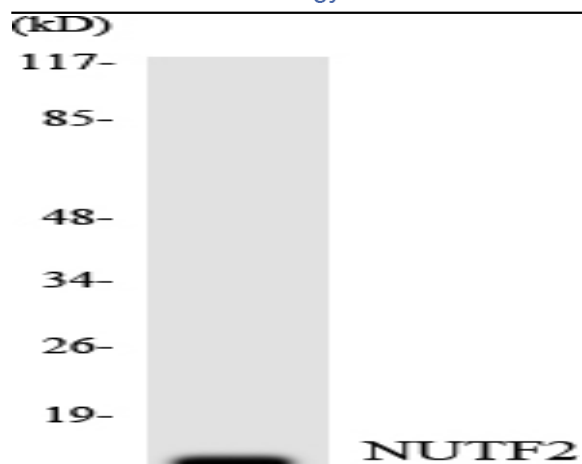
Western Blot analysis of Hela cells using NTF2 Polyclonal Antibody



Western blot analysis of NUTF2 Antibody. The lane on the right is blocked with the NUTF2 peptide.



Immunohistochemistryt analysis of paraffin-embedded human prostate, using NUTF2 Antibody. The lane on the right is blocked with the NUTF2 peptide.



Western blot analysis of the lysates from HT-29 cells using NUTF2 antibody.