

## NP220 Polyclonal Antibody

<b>Catalog No :</b>	YT3177
<b>Reactivity :</b>	Human;Rat;Mouse;
<b>Applications :</b>	WB;IHC;IF;ELISA
<b>Target :</b>	NP220
<b>Gene Name :</b>	ZNF638
<b>Protein Name :</b>	Zinc finger protein 638
<b>Human Gene Id :</b>	27332
<b>Human Swiss Prot No :</b>	Q14966
<b>Mouse Swiss Prot No :</b>	Q61464
<b>Immunogen :</b>	The antiserum was produced against synthesized peptide derived from human ZNF638. AA range:1271-1320
<b>Specificity :</b>	NP220 Polyclonal Antibody detects endogenous levels of NP220 protein.
<b>Formulation :</b>	Liquid in PBS containing 50% glycerol, 0.5% BSA and 0.02% sodium azide.
<b>Source :</b>	Polyclonal, Rabbit,IgG
<b>Dilution :</b>	WB 1:500 - 1:2000. IHC 1:100 - 1:300. ELISA: 1:20000.. IF 1:50-200
<b>Purification :</b>	The antibody was affinity-purified from rabbit antiserum by affinity-chromatography using epitope-specific immunogen.
<b>Concentration :</b>	1 mg/ml
<b>Storage Stability :</b>	-15°C to -25°C/1 year(Do not lower than -25°C)
<b>Observed Band :</b>	220kD

**Background :** zinc finger protein 638(ZNF638) Homo sapiens The protein encoded by this gene is a nucleoplasmic protein. It binds cytidine-rich sequences in double-stranded DNA. This protein has three types of domains: MH1, MH2 (repeated three times) and MH3. It is associated with packaging, transferring, or processing transcripts. Multiple alternatively spliced transcript variants have been found for this gene, but the biological validity of some variants has not been determined. [provided by RefSeq, Jul 2008],

**Function :** alternative products:Additional isoforms seem to exist,disease:Isoform 5 is a tumor-associated antigen found in several cutaneous T-cell lymphoma (CTCL), and in particular in mycosis fungoides patients and in Sezary syndrome patients.,function:Binds to cytidine clusters in double-stranded DNA.,PTM:Phosphorylated upon DNA damage, probably by ATM or ATR.,sequence caution:Contaminating sequence. Potential poly-A sequence.,similarity:Contains 1 matrin-type zinc finger.,similarity:Contains 2 RRM (RNA recognition motif) domains.,subunit:Interacts with FHL2.,

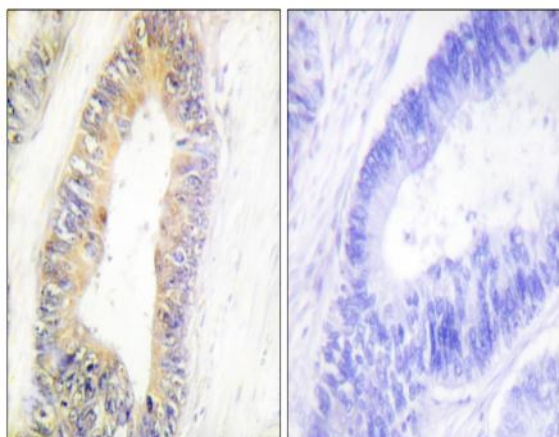
**Subcellular Location :** Nucleus speckle .

**Expression :** Cervix,Epithelium,Skin,Testis,Uterus,

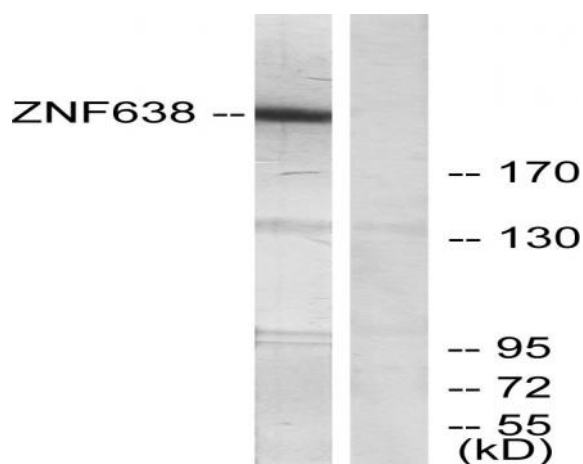
## Products Images



Western Blot analysis of various cells using NP220 Polyclonal Antibody



Immunohistochemistry analysis of paraffin-embedded human colon carcinoma tissue, using ZNF638 Antibody. The picture on the right is blocked with the synthesized peptide.



Western blot analysis of lysates from HepG2 cells, treated with serum 20% 15', using ZNF638 Antibody. The lane on the right is blocked with the synthesized peptide.