

Nkx-6.3 Polyclonal Antibody

Catalog No :	YT3144
Reactivity :	Human;Mouse;Monkey
Applications :	WB;IF;ELISA
Target :	Nkx-6.3
Gene Name :	NKX6-3
Protein Name :	Homeobox protein Nkx-6.3
Human Gene Id :	157848
Human Swiss Prot No :	A6NJ46
Mouse Gene Id :	74561
Mouse Swiss Prot No :	Q3UHX8
Immunogen :	The antiserum was produced against synthesized peptide derived from human NKX6.3. AA range:161-210
Specificity :	Nkx-6.3 Polyclonal Antibody detects endogenous levels of Nkx-6.3 protein.
Formulation :	Liquid in PBS containing 50% glycerol, 0.5% BSA and 0.02% sodium azide.
Source :	Polyclonal, Rabbit,IgG
Dilution :	WB 1:500 - 1:2000. IF 1:200 - 1:1000. ELISA: 1:10000. Not yet tested in other applications.
Purification :	The antibody was affinity-purified from rabbit antiserum by affinity-chromatography using epitope-specific immunogen.
Concentration :	1 mg/ml
Storage Stability :	-15°C to -25°C/1 year(Do not lower than -25°C)

Observed Band : 34kD

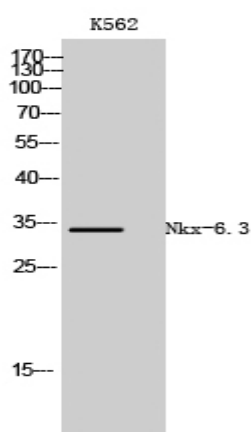
Background : The NKX family of homeodomain proteins controls numerous developmental processes. Members of the NKX6 subfamily, including NKX6-3, are involved in development of the central nervous system (CNS), gastrointestinal tract, and pancreas (Alanentalo et al., 2006 [PubMed 16326147]).[supplied by OMIM, Mar 2008],

Function : function:Putative transcription factor, which may be involved in patterning of central nervous system and pancreas.,similarity:Contains 1 homeobox DNA-binding domain.,

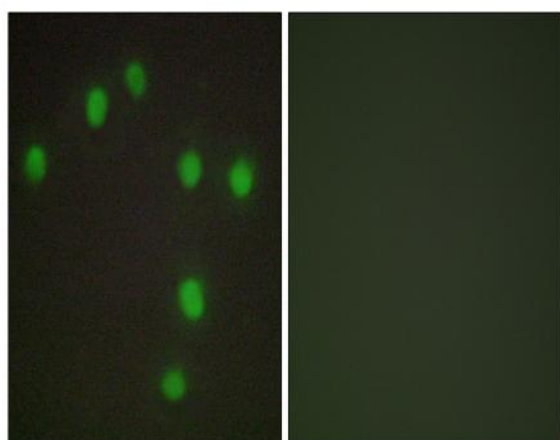
Subcellular Location : Nucleus .

Expression : Brain,

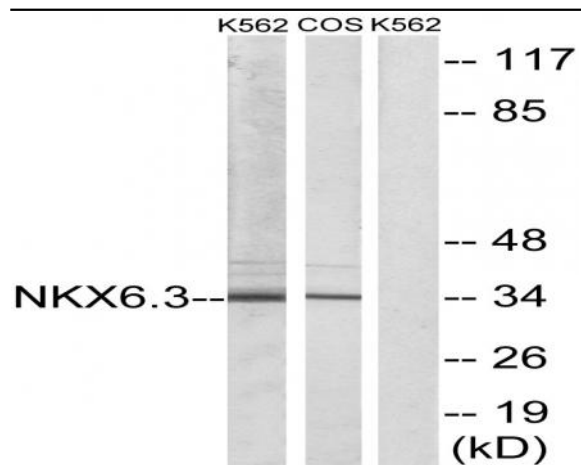
Products Images



Western Blot analysis of K562 cells using Nkx-6.3 Polyclonal Antibody cells nucleus extracted by Minute TM Cytoplasmic and Nuclear Fractionation kit (SC-003, Invent biotech, MN, USA).



Immunofluorescence analysis of HUVEC cells, using NKX6.3 Antibody. The picture on the right is blocked with the synthesized peptide.



Western blot analysis of lysates from K562 and COS7 cells, using NKX6.3 Antibody. The lane on the right is blocked with the synthesized peptide.