

Nek5 Polyclonal Antibody

Catalog No :	YT3033
Reactivity :	Human;Mouse
Applications :	WB;ELISA
Target :	Nek5
Gene Name :	NEK5
Protein Name :	Serine/threonine-protein kinase Nek5
Human Gene Id :	341676
Human Swiss Prot No :	Q6P3R8
Mouse Gene Id :	330721
Mouse Swiss Prot No :	Q7TSC3
Immunogen :	The antiserum was produced against synthesized peptide derived from human NEK5. AA range:160-209
Specificity :	Nek5 Polyclonal Antibody detects endogenous levels of Nek5 protein.
Formulation :	Liquid in PBS containing 50% glycerol, 0.5% BSA and 0.02% sodium azide.
Source :	Polyclonal, Rabbit,IgG
Dilution :	WB 1:500 - 1:2000. ELISA: 1:5000. Not yet tested in other applications.
Purification :	The antibody was affinity-purified from rabbit antiserum by affinity-chromatography using epitope-specific immunogen.
Concentration :	1 mg/ml
Storage Stability :	-15°C to -25°C/1 year(Do not lower than -25°C)

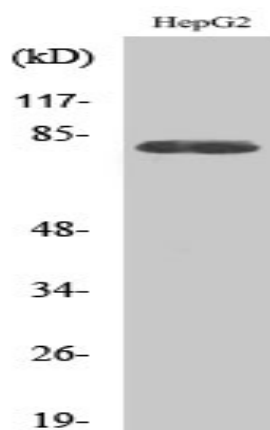
Molecularweight : 81kD

Background : catalytic activity:ATP + a protein = ADP + a phosphoprotein.,cofactor:Magnesium.,similarity:Belongs to the protein kinase superfamily. NEK Ser/Thr protein kinase family. NIMA subfamily.,similarity:Contains 1 protein kinase domain.,

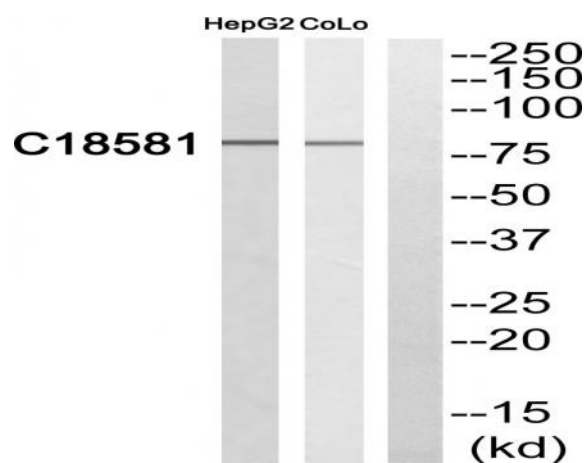
Function : catalytic activity:ATP + a protein = ADP + a phosphoprotein.,cofactor:Magnesium.,similarity:Belongs to the protein kinase superfamily. NEK Ser/Thr protein kinase family. NIMA subfamily.,similarity:Contains 1 protein kinase domain.,

Expression : Testis,

Products Images



Western Blot analysis of various cells using Nek5 Polyclonal Antibody



Western blot analysis of NEK5 Antibody. The lane on the right is blocked with the NEK5 peptide.