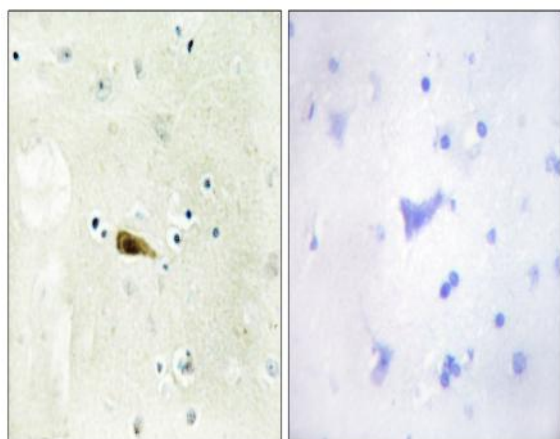


MOF Polyclonal Antibody

Catalog No :	YT2814
Reactivity :	Human;Mouse;Rat
Applications :	IHC;IF;ELISA
Target :	MOF
Gene Name :	KAT8
Protein Name :	Histone acetyltransferase KAT8
Human Gene Id :	84148
Human Swiss Prot No :	Q9H7Z6
Mouse Gene Id :	67773
Mouse Swiss Prot No :	Q9D1P2
Rat Gene Id :	310194
Rat Swiss Prot No :	Q5XI06
Immunogen :	The antiserum was produced against synthesized peptide derived from human MYST1. AA range:101-150
Specificity :	MOF Polyclonal Antibody detects endogenous levels of MOF protein.
Formulation :	Liquid in PBS containing 50% glycerol, 0.5% BSA and 0.02% sodium azide.
Source :	Polyclonal, Rabbit,IgG
Dilution :	IHC 1:100 - 1:300. ELISA: 1:10000.. IF 1:50-200
Purification :	The antibody was affinity-purified from rabbit antiserum by affinity-chromatography using epitope-specific immunogen.

Concentration :	1 mg/ml
Storage Stability :	-15°C to -25°C/1 year(Do not lower than -25°C)
Molecularweight :	52kD
Background :	This gene encodes a member of the MYST histone acetylase protein family. The encoded protein has a characteristic MYST domain containing an acetyl-CoA-binding site, a chromodomain typical of proteins which bind histones, and a C2HC-type zinc finger. Multiple transcript variants encoding different isoforms have been found for this gene. [provided by RefSeq, Feb 2012],
Function :	catalytic activity:Acetyl-CoA + histone = CoA + acetylhistone.,function:Histone acetyltransferase which may be involved in transcriptional activation. May influence the function of ATM.,similarity:Belongs to the MYST (SAS/MOZ) family.,similarity:Contains 1 C2HC-type zinc finger.,similarity:Contains 1 chromo domain.,subunit:Component of a multisubunit histone acetyltransferase complex (MSL) at least composed of the MOF/MYST1, MSL1/hampin, MSL2L1 and MSL3L1. Interacts with the chromodomain of MORF4L1/MRG15. Interacts with ATM through the chromodomain.,
Subcellular Location :	Nucleus . Chromosome .
Expression :	Brain,Embryo,Heart,Uterus,

Products Images



Immunohistochemistry analysis of paraffin-embedded human brain tissue, using MYST1 Antibody. The picture on the right is blocked with the synthesized peptide.