

MRP-S12 Polyclonal Antibody

Catalog No :	YT2874
Reactivity :	Human;Mouse
Applications :	WB;IHC
Target :	MRP-S12
Fields :	>>Ribosome
Gene Name :	MRPS12
Protein Name :	28S ribosomal protein S12 mitochondrial
Human Gene Id :	6183
Human Swiss Prot No :	O15235
Mouse Gene Id :	24030
Mouse Swiss Prot No :	O35680
Immunogen :	The antiserum was produced against synthesized peptide derived from human MRPS12. AA range:21-70
Specificity :	MRP-S12 Polyclonal Antibody detects endogenous levels of MRP-S12 protein.
Formulation :	Liquid in PBS containing 50% glycerol, 0.5% BSA and 0.02% sodium azide.
Source :	Polyclonal, Rabbit,IgG
Dilution :	WB 1:500-2000;IHC-p 1:50-300
Purification :	The antibody was affinity-purified from rabbit antiserum by affinity-chromatography using epitope-specific immunogen.
Concentration :	1 mg/ml

Storage Stability : -15°C to -25°C/1 year (Do not lower than -25°C)

Observed Band : 20kD

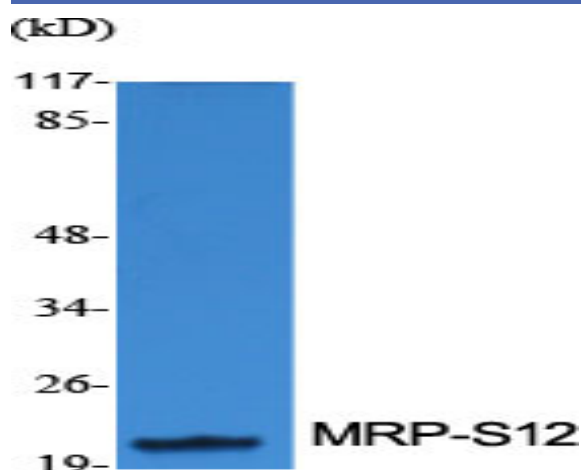
Background : Mammalian mitochondrial ribosomal proteins are encoded by nuclear genes and help in protein synthesis within the mitochondrion. Mitochondrial ribosomes (mitoribosomes) consist of a small 28S subunit and a large 39S subunit. They have an estimated 75% protein to rRNA composition compared to prokaryotic ribosomes, where this ratio is reversed. Another difference between mammalian mitoribosomes and prokaryotic ribosomes is that the latter contain a 5S rRNA. Among different species, the proteins comprising the mitoribosome differ greatly in sequence, and sometimes in biochemical properties, which prevents easy recognition by sequence homology. This gene encodes a 28S subunit protein that belongs to the ribosomal protein S12P family. The encoded protein is a key component of the ribosomal small subunit and controls the decoding fidelity and susceptibility to aminoglycoside antibiotics. Th

Function : similarity:Belongs to the ribosomal protein S12P family.,subunit:Component of the mitochondrial ribosome small subunit (28S) which comprises a 12S rRNA and about 30 distinct proteins.,

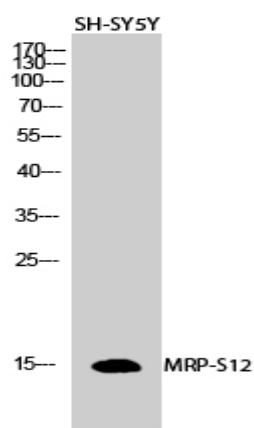
Subcellular Location : Mitochondrion .

Expression : Brain,Colon,Liver,Skin,

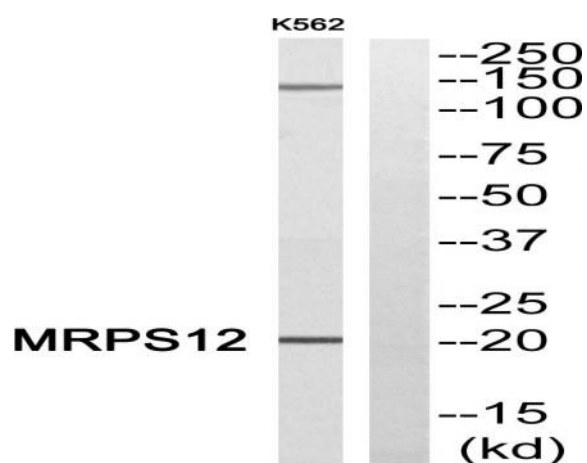
Products Images



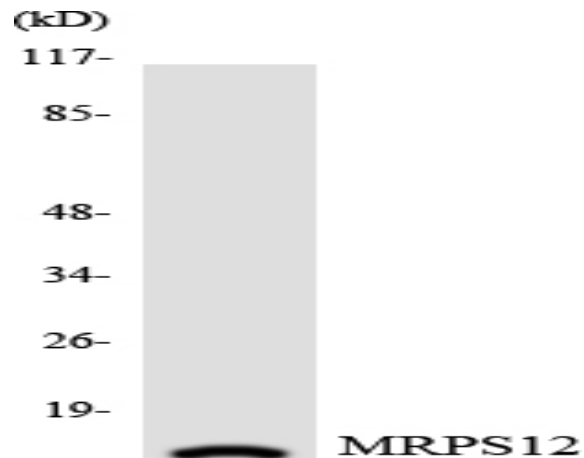
Western Blot analysis of various cells using MRP-S12 Polyclonal Antibody diluted at 1:1000



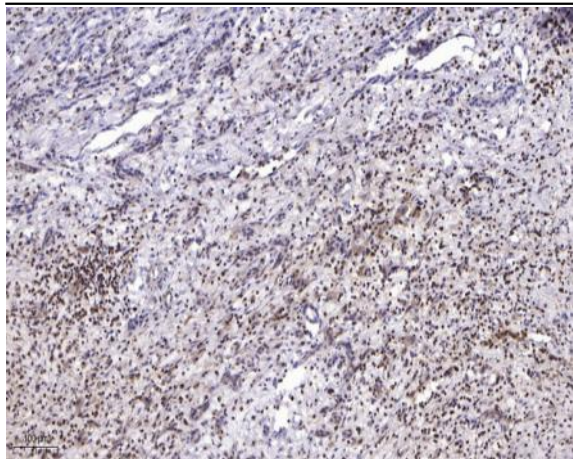
Western Blot analysis of SH-SY5Y cells using MRP-S12
Polyclonal Antibody diluted at 1:1000



Western blot analysis of MRPS12 Antibody. The lane on the right
is blocked with the MRPS12 peptide.



Western blot analysis of the lysates from HepG2 cells using
MRPS12 antibody.



Immunohistochemical analysis of paraffin-embedded human liver cancer. 1, Antibody was diluted at 1:200(4° overnight). 2, Tris-EDTA,pH9.0 was used for antigen retrieval. 3,Secondary antibody was diluted at 1:200(room temperature, 45min).