

LGR6 Polyclonal Antibody

Catalog No :	YT2557
Reactivity :	Human;Rat;Mouse;
Applications :	WB;IHC
Target :	LGR6
Fields :	>>Wnt signaling pathway
Gene Name :	LGR6
Protein Name :	Leucine-rich repeat-containing G-protein coupled receptor 6
Human Gene Id :	59352
Human Swiss Prot No :	Q9HBX8
Mouse Swiss Prot No :	Q3UVD5
Immunogen :	The antiserum was produced against synthesized peptide derived from human LGR6. AA range:471-520
Specificity :	LGR6 Polyclonal Antibody detects endogenous levels of LGR6 protein.
Formulation :	Liquid in PBS containing 50% glycerol, 0.5% BSA and 0.02% sodium azide.
Source :	Polyclonal, Rabbit,IgG
Dilution :	WB 1:500-2000;IHC 1:50-300
Purification :	The antibody was affinity-purified from rabbit antiserum by affinity-chromatography using epitope-specific immunogen.
Concentration :	1 mg/ml
Storage Stability :	-15°C to -25°C/1 year(Do not lower than -25°C)

Observed Band : 104kD

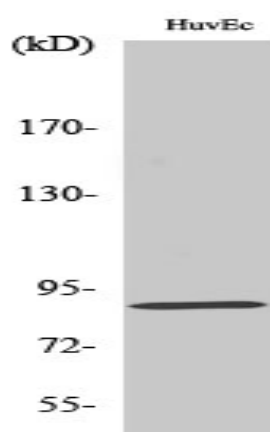
Background : This gene encodes a member of the leucine-rich repeat-containing subgroup of the G protein-coupled 7-transmembrane protein superfamily. The encoded protein is a glycoprotein hormone receptor with a large N-terminal extracellular domain that contains leucine-rich repeats important for the formation of a horseshoe-shaped interaction motif for ligand binding. Alternative splicing of this gene results in multiple transcript variants. [provided by RefSeq, Jul 2008],

Function : function:Orphan receptor.,PTM:Phosphorylated upon DNA damage, probably by ATM or ATR.,similarity:Belongs to the G-protein coupled receptor 1 family.,similarity:Contains 16 LRR (leucine-rich) repeats.,

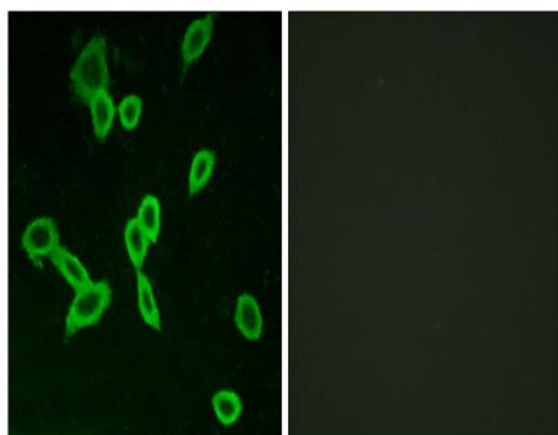
Subcellular Location : Cell membrane ; Multi-pass membrane protein .

Expression : Mammary gland,

Products Images



Western Blot analysis of various cells using LGR6 Polyclonal Antibody diluted at 1:500



Immunofluorescence analysis of LOVO cells, using LGR6 Antibody. The picture on the right is blocked with the synthesized peptide.

