

HuB/D Polyclonal Antibody

Catalog No :	YT2261
Reactivity :	Human;Mouse;Rat
Applications :	WB;IHC;IF;ELISA
Target :	HuB/D
Gene Name :	ELAVL2/ELAVL4
Protein Name :	ELAV-like protein 2/ELAV-like protein 4
Human Gene Id :	1993/1996
Human Swiss Prot No :	Q12926/P26378
Mouse Gene Id :	15569/15572
Rat Gene Id :	432358
Rat Swiss Prot No :	Q8CH84/O09032
Immunogen :	The antiserum was produced against synthesized peptide derived from human ELAV2/4. AA range:61-110
Specificity :	HuB/D Polyclonal Antibody detects endogenous levels of HuB/D protein.
Formulation :	Liquid in PBS containing 50% glycerol, 0.5% BSA and 0.02% sodium azide.
Source :	Polyclonal, Rabbit,IgG
Dilution :	WB 1:500 - 1:2000. IHC 1:100 - 1:300. IF 1:200 - 1:1000. ELISA: 1:40000. Not yet tested in other applications.
Purification :	The antibody was affinity-purified from rabbit antiserum by affinity-chromatography using epitope-specific immunogen.
Concentration :	1 mg/ml

Storage Stability : -15°C to -25°C/1 year (Do not lower than -25°C)

Observed Band : 40kD

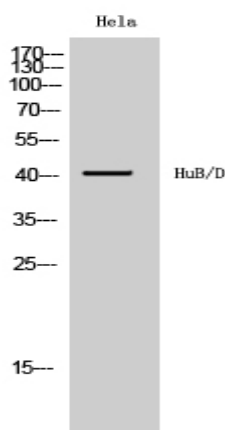
Background : ELAV like RNA binding protein 2 (ELAVL2) Homo sapiens The protein encoded by this gene is a neural-specific RNA-binding protein that is known to bind to several 3' UTRs, including its own and also that of FOS and ID. The encoded protein may recognize a GAAA motif in the RNA. Three transcript variants encoding two different isoforms have been found for this gene. [provided by RefSeq, Jan 2010],

Function : function: Binds RNA. Seems to recognize a GAAA motif. Can bind to its own 3'-UTR, the FOS 3'-UTR and the ID 3'-UTR., similarity: Belongs to the RRM elav family., similarity: Contains 3 RRM (RNA recognition motif) domains., tissue specificity: Brain; neural-specific.,

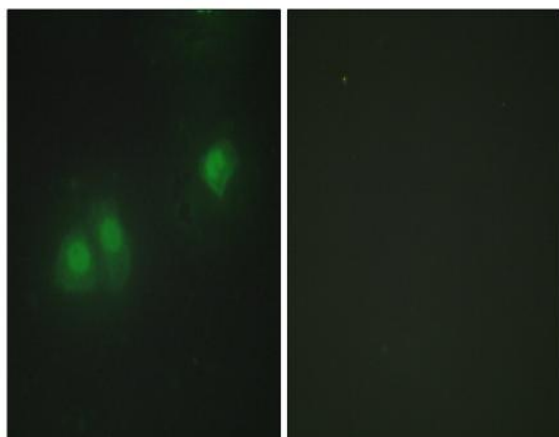
Subcellular Location : nucleoplasm,

Expression : Brain; neural-specific.

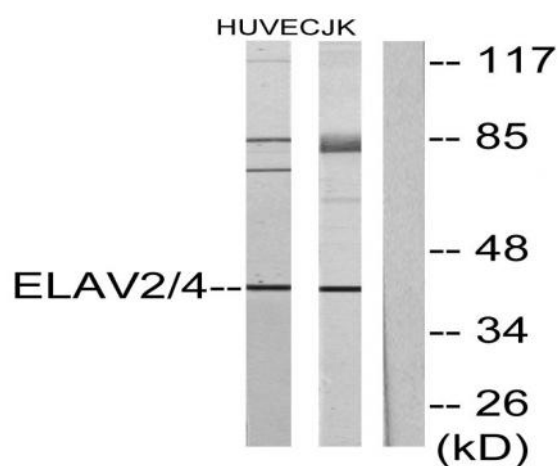
Products Images



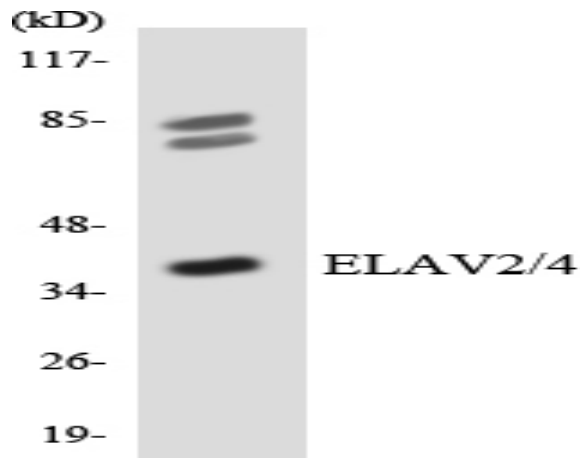
Western Blot analysis of HeLa cells using HuB/D Polyclonal Antibody diluted at 1:1000



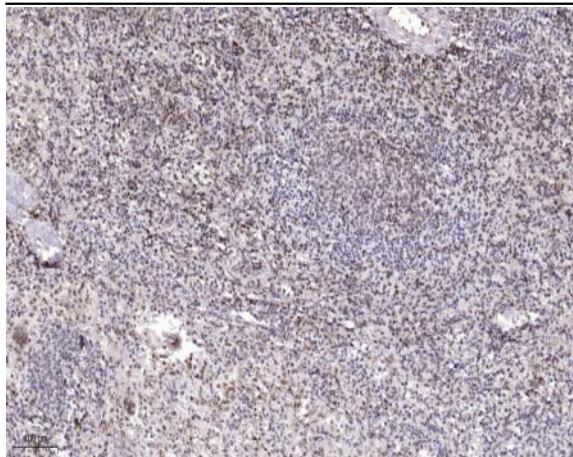
Immunofluorescence analysis of HepG2 cells, using ELAV2/4 Antibody. The picture on the right is blocked with the synthesized peptide.



Western blot analysis of lysates from Jurkat and HUVEC cells, using ELAV2/4 Antibody. The lane on the right is blocked with the synthesized peptide.



Western blot analysis of the lysates from 293 cells using ELAV2/4 antibody.



Immunohistochemical analysis of paraffin-embedded human spleen. 1, Antibody was diluted at 1:200(4 ° overnight). 2, Tris-EDTA,pH9.0 was used for antigen retrieval. 3,Secondary antibody was diluted at 1:200(room temperature, 45min).