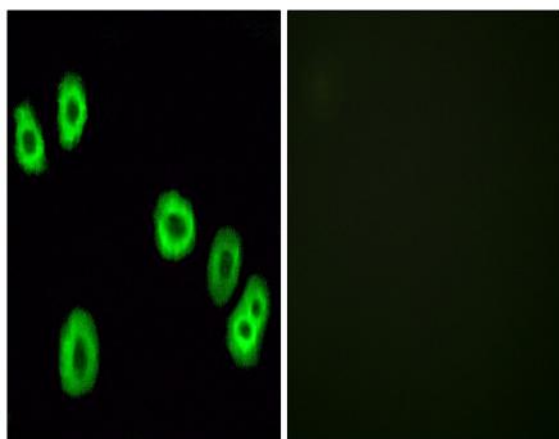


GPR18 Polyclonal Antibody

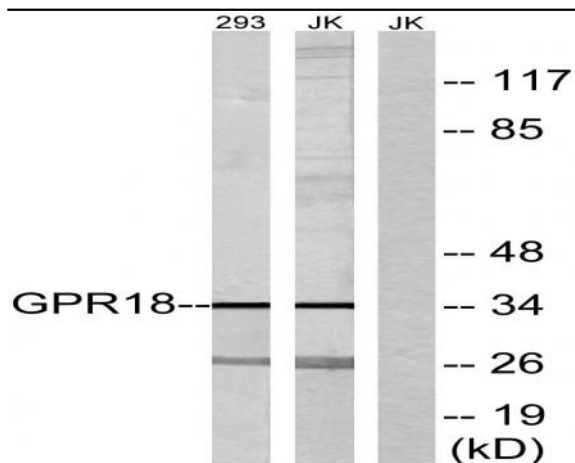
Catalog No :	YT2005
Reactivity :	Human;Mouse;Rat
Applications :	WB;IHC;IF;ELISA
Target :	GPR18
Gene Name :	GPR18
Protein Name :	N-arachidonyl glycine receptor
Human Gene Id :	2841
Human Swiss Prot No :	Q14330
Mouse Gene Id :	110168
Mouse Swiss Prot No :	Q8K1Z6
Rat Gene Id :	679957
Rat Swiss Prot No :	A1A5S3
Immunogen :	The antiserum was produced against synthesized peptide derived from human GPR18. AA range:191-240
Specificity :	GPR18 Polyclonal Antibody detects endogenous levels of GPR18 protein.
Formulation :	Liquid in PBS containing 50% glycerol, 0.5% BSA and 0.02% sodium azide.
Source :	Polyclonal, Rabbit,IgG
Dilution :	WB 1:500 - 1:2000. IHC 1:100 - 1:300. IF 1:200 - 1:1000. ELISA: 1:5000. Not yet tested in other applications.
Purification :	The antibody was affinity-purified from rabbit antiserum by affinity-chromatography using epitope-specific immunogen.

Concentration :	1 mg/ml
Storage Stability :	-15°C to -25°C/1 year(Do not lower than -25°C)
Observed Band :	34kD
Background :	function:Receptor for N-arachidonyl glycine. The activity of this receptor is mediated by G proteins which inhibit adenylyl cyclase. May contribute to regulation of the immune system.,similarity:Belongs to the G-protein coupled receptor 1 family.,tissue specificity:Most abundant in testis and spleen. Highly expressed in CD4 and CD8-positive T-cells as well as CD19-positive B-cells.,
Function :	function:Receptor for N-arachidonyl glycine. The activity of this receptor is mediated by G proteins which inhibit adenylyl cyclase. May contribute to regulation of the immune system.,similarity:Belongs to the G-protein coupled receptor 1 family.,tissue specificity:Most abundant in testis and spleen. Highly expressed in CD4 and CD8-positive T-cells as well as CD19-positive B-cells.,
Subcellular Location :	Cell membrane ; Multi-pass membrane protein . Cytoplasmic vesicle membrane .
Expression :	Expressed in midpiece of spermatozoon (at protein level) (PubMed:27572937). Most abundant in testis and spleen (PubMed:16844083). Highly expressed in CD4 and CD8-positive T-cells as well as CD19-positive B-cells (PubMed:16844083).

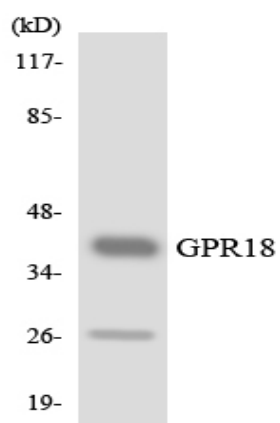
Products Images



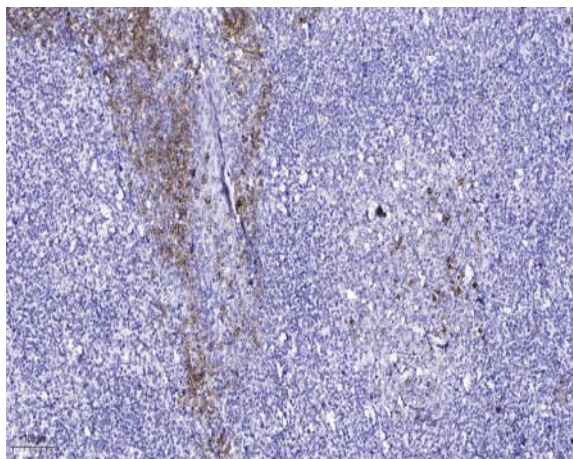
Immunofluorescence analysis of HUVEC cells, using GPR18 Antibody. The picture on the right is blocked with the synthesized peptide.



Western blot analysis of lysates from 293 and Jurkat cells, using GPR18 Antibody. The lane on the right is blocked with the synthesized peptide.



Western blot analysis of the lysates from HUVEC cells using GPR18 antibody.



Immunohistochemical analysis of paraffin-embedded human tonsil. 1, Antibody was diluted at 1:200(4° overnight). 2, Tris-EDTA,pH9.0 was used for antigen retrieval. 3,Secondary antibody was diluted at 1:200(room temperature, 45min).