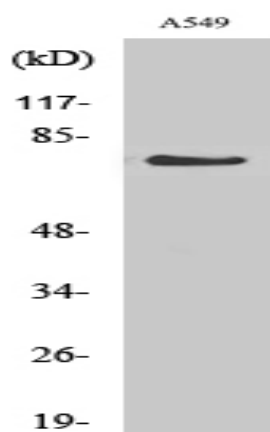


GCS- α -1 Polyclonal Antibody

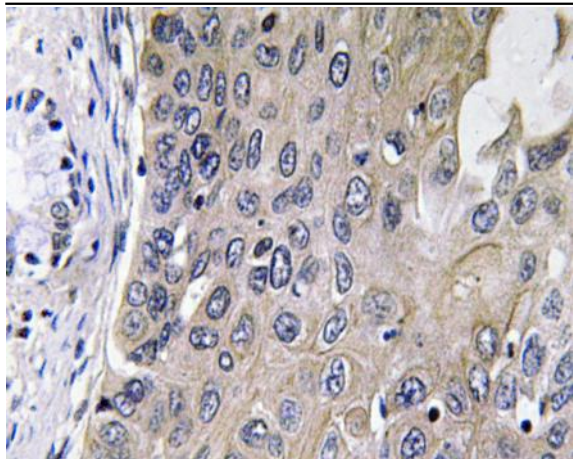
Catalog No :	YT1885
Reactivity :	Human;Mouse;Rat
Applications :	WB;CoIP;IHC;IF;ELISA
Target :	GCS- α -1
Fields :	>>Purine metabolism;>>Metabolic pathways;>>cGMP-PKG signaling pathway;>>Vascular smooth muscle contraction;>>Gap junction;>>Platelet activation;>>Circadian entrainment;>>Long-term depression;>>Oxytocin signaling pathway;>>Renin secretion;>>Salivary secretion
Gene Name :	GUCY1A3
Protein Name :	Guanylate cyclase soluble subunit alpha-3
Human Gene Id :	2982
Human Swiss Prot No :	Q02108
Mouse Gene Id :	60596
Mouse Swiss Prot No :	Q9ERL9
Rat Swiss Prot No :	P19686
Immunogen :	The antiserum was produced against synthesized peptide derived from human GCS-alpha-1. AA range:374-423
Specificity :	GCS- α -1 Polyclonal Antibody detects endogenous levels of GCS- α -1 protein.
Formulation :	Liquid in PBS containing 50% glycerol, 0.5% BSA and 0.02% sodium azide.
Source :	Polyclonal, Rabbit,IgG
Dilution :	WB 1:500 - 1:2000. IHC 1:100 - 1:300. ELISA: 1:40000.. IF 1:50-200

Purification :	The antibody was affinity-purified from rabbit antiserum by affinity-chromatography using epitope-specific immunogen.
Concentration :	1 mg/ml
Storage Stability :	-15°C to -25°C/1 year(Do not lower than -25°C)
Observed Band :	77kD
Cell Pathway :	Purine metabolism;Vascular smooth muscle contraction;Gap junction;Long-term depression;
Background :	Soluble guanylate cyclases are heterodimeric proteins that catalyze the conversion of GTP to 3',5'-cyclic GMP and pyrophosphate. The protein encoded by this gene is an alpha subunit of this complex and it interacts with a beta subunit to form the guanylate cyclase enzyme, which is activated by nitric oxide. Several transcript variants encoding a few different isoforms have been found for this gene. [provided by RefSeq, Jan 2012],
Function :	catalytic activity:GTP = 3',5'-cyclic GMP + diphosphate.,enzyme regulation:Activated by nitric oxide in the presence of magnesium or manganese ions.,miscellaneous:There are two types of guanylate cyclases: soluble forms and membrane-associated receptor forms.,similarity:Belongs to the adenylyl cyclase class-4/guanylyl cyclase family.,similarity:Contains 1 guanylate cyclase domain.,subunit:Heterodimer of an alpha and a beta chain.,
Subcellular Location :	Cytoplasm .
Expression :	Detected in brain cortex and lung (at protein level).

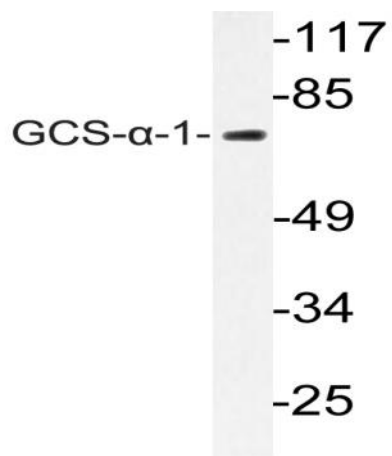
Products Images



Western Blot analysis of various cells using GCS-α-1 Polyclonal Antibody



Immunohistochemistry analysis of GCS- α -1 antibody in paraffin-embedded human lung carcinoma tissue.



Western blot analysis of lysate from A549 cells, using GCS- α -1 antibody.