

## Fyb Polyclonal Antibody

<b>Catalog No :</b>	YT1804
<b>Reactivity :</b>	Human;Mouse;Rat
<b>Applications :</b>	WB;ELISA
<b>Target :</b>	Fyb
<b>Fields :</b>	>>Rap1 signaling pathway;>>Yersinia infection
<b>Gene Name :</b>	FYB
<b>Protein Name :</b>	FYN-binding protein
<b>Human Gene Id :</b>	2533
<b>Human Swiss Prot No :</b>	O15117
<b>Mouse Gene Id :</b>	23880
<b>Mouse Swiss Prot No :</b>	O35601
<b>Immunogen :</b>	Synthesized peptide derived from Fyb . at AA range: 620-700
<b>Specificity :</b>	Fyb Polyclonal Antibody detects endogenous levels of Fyb protein.
<b>Formulation :</b>	Liquid in PBS containing 50% glycerol, 0.5% BSA and 0.02% sodium azide.
<b>Source :</b>	Polyclonal, Rabbit,IgG
<b>Dilution :</b>	WB 1:500 - 1:2000. ELISA: 1:40000. Not yet tested in other applications.
<b>Purification :</b>	The antibody was affinity-purified from rabbit antiserum by affinity-chromatography using epitope-specific immunogen.
<b>Concentration :</b>	1 mg/ml

**Storage Stability :** -15°C to -25°C/1 year (Do not lower than -25°C)

**Observed Band :** 85kD

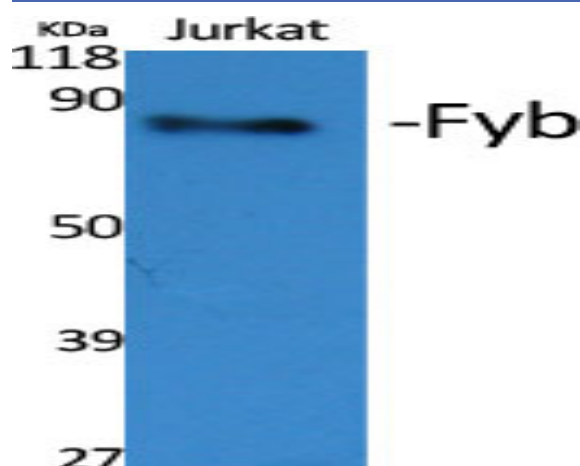
**Background :** The protein encoded by this gene is an adapter for the FYN protein and LCP2 signaling cascades in T-cells. The encoded protein is involved in platelet activation and controls the expression of interleukin-2. Three transcript variants encoding different isoforms have been found for this gene. [provided by RefSeq, Jul 2011],

**Function :** function:Acts as an adapter protein of the FYN and LCP2 signaling cascades in T cells. Modulates the expression of interleukin-2 (IL-2). Involved in platelet activation. Prevents the degradation of SKAP1 and SKAP2.,PTM:T-cell receptor ligation leads to increased tyrosine phosphorylation.,similarity:Contains 1 SH3 domain.,subunit:Part of a complex consisting of SKAP2, FYB and PTPNS1. Part of a complex consisting of SKAP2, FYB and LILRB3 (By similarity). Interacts with FYN, LCP2, SKAP1 and SKAP2.,tissue specificity:Expressed in hematopoietic tissues such as myeloid and T-cells, spleen and thymus. Not expressed in B-cells, nor in non-lymphoid tissues.,

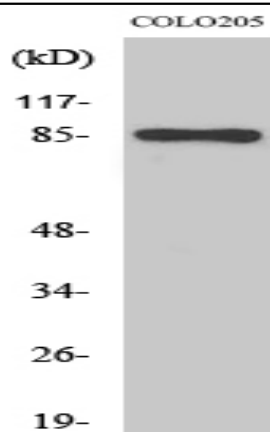
**Subcellular Location :** Cytoplasm . Nucleus . Cell junction . Colocalizes with TMEM47 at cell-cell contacts in podocytes. .

**Expression :** Expressed in hematopoietic tissues such as myeloid and T-cells, spleen and thymus. Not expressed in B-cells, nor in non-lymphoid tissues.

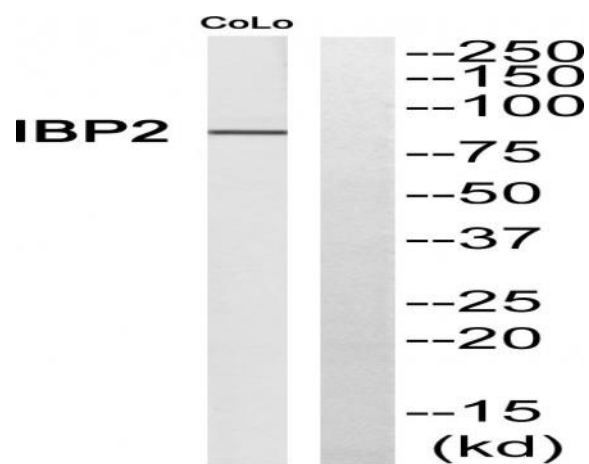
## Products Images



Western Blot analysis of various cells using Fyb Polyclonal Antibody



Western Blot analysis of COLO205 cells using Fyb Polyclonal Antibody



Western blot analysis of FYB Antibody. The lane on the right is blocked with the FYB peptide.