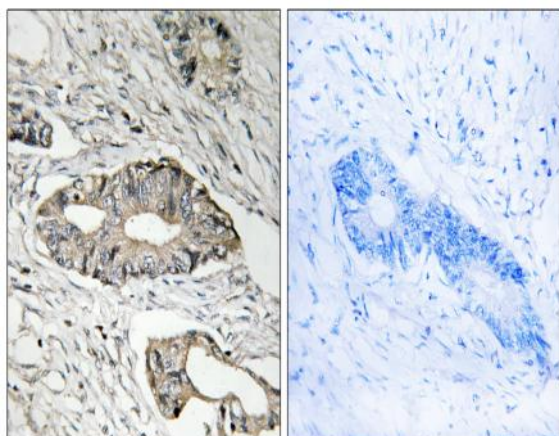


## Epsin 3 Polyclonal Antibody

<b>Catalog No :</b>	YT1603
<b>Reactivity :</b>	Human;Rat;Mouse;
<b>Applications :</b>	WB;IHC;IF;ELISA
<b>Target :</b>	Epsin 3
<b>Fields :</b>	>>Endocytosis
<b>Gene Name :</b>	EPN3
<b>Protein Name :</b>	Epsin-3
<b>Human Gene Id :</b>	55040
<b>Human Swiss Prot No :</b>	Q9H201
<b>Mouse Swiss Prot No :</b>	Q91W69
<b>Immunogen :</b>	The antiserum was produced against synthesized peptide derived from human EPN3. AA range:401-450
<b>Specificity :</b>	Epsin 3 Polyclonal Antibody detects endogenous levels of Epsin 3 protein.
<b>Formulation :</b>	Liquid in PBS containing 50% glycerol, 0.5% BSA and 0.02% sodium azide.
<b>Source :</b>	Polyclonal, Rabbit,IgG
<b>Dilution :</b>	WB 1:500 - 1:2000. IHC 1:100 - 1:300. ELISA: 1:10000.. IF 1:50-200
<b>Purification :</b>	The antibody was affinity-purified from rabbit antiserum by affinity-chromatography using epitope-specific immunogen.
<b>Concentration :</b>	1 mg/ml
<b>Storage Stability :</b>	-15°C to -25°C/1 year(Do not lower than -25°C)

<b>Observed Band :</b>	68kD
<b>Cell Pathway :</b>	Endocytosis;
<b>Background :</b>	<p>induction:In keratinocytes, by wounding or contact with collagen.,similarity:Belongs to the epsin family.,similarity:Contains 1 ENTH (epsin N-terminal homology) domain.,similarity:Contains 2 UIM (ubiquitin-interacting motif) repeats.,subcellular location:Concentrated in the perinuclear region and associated with clathrin-coated vesicles close to the cell periphery. May shuttle to the nucleus.,tissue specificity:Detected in migrating keratinocytes from wounded skin, but not in differentiating keratinocytes or in normal skin. Detected in chronic wounds, basal cell carcinoma and ulcerative colitis.,</p>
<b>Function :</b>	<p>induction:In keratinocytes, by wounding or contact with collagen.,similarity:Belongs to the epsin family.,similarity:Contains 1 ENTH (epsin N-terminal homology) domain.,similarity:Contains 2 UIM (ubiquitin-interacting motif) repeats.,subcellular location:Concentrated in the perinuclear region and associated with clathrin-coated vesicles close to the cell periphery. May shuttle to the nucleus.,tissue specificity:Detected in migrating keratinocytes from wounded skin, but not in differentiating keratinocytes or in normal skin. Detected in chronic wounds, basal cell carcinoma and ulcerative colitis.,</p>
<b>Subcellular Location :</b>	<p>Cytoplasm . Cytoplasm, perinuclear region . Cytoplasmic vesicle, clathrin-coated vesicle . Nucleus . Concentrated in the perinuclear region and associated with clathrin-coated vesicles close to the cell periphery. May shuttle to the nucleus.</p>
<b>Expression :</b>	<p>Detected in migrating keratinocytes from wounded skin, but not in differentiating keratinocytes or in normal skin. Detected in chronic wounds, basal cell carcinoma and ulcerative colitis.</p>

## Products Images



Immunohistochemistry analysis of paraffin-embedded human colon carcinoma tissue, using EPN3 Antibody. The picture on the right is blocked with the synthesized peptide.

