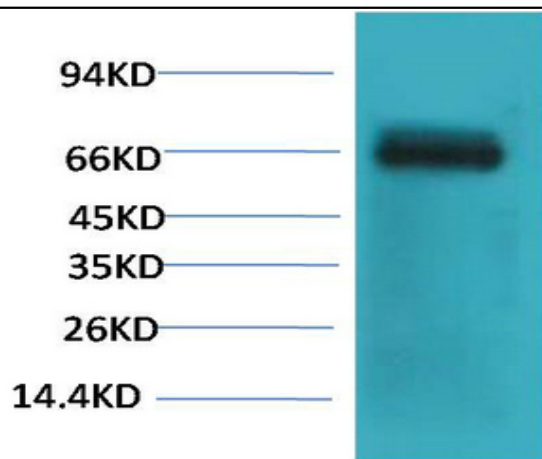


Bovine Serum Albumin Monoclonal Antibody(Mix-mA)

Catalog No :	YM3444
Reactivity :	Cow
Applications :	WB
Target :	Bovine Serum Albumin
Immunogen :	Purified Protein
Specificity :	The antibody detects endogenous Bovine Serum Albumin protein.
Formulation :	PBS, pH 7.4, containing 0.02% sodium azide as Preservative and 50% Glycerol.
Source :	Monoclonal, Mouse
Dilution :	WB 1:1000-2000
Purification :	The antibody was affinity-purified from mouse ascites by affinity-chromatography using epitope-specific immunogen.
Storage Stability :	-15°C to -25°C/1 year(Do not lower than -25°C)
Observed Band :	66kD
Background :	Albumin is the most abundant protein in the circulatory system. In mammals albumin is synthesized initially as preproalbumin by the liver. After removal of the signal peptide, the resultant proalbumin is further processed by removal of the six-residue propeptide from the new N-terminus. The albumin released into circulation possesses a half-life of 19 days.

Products Images



Western blot analysis of Bovine Serum Albumin using Bovine Serum Albumin Monoclonal Antibody.