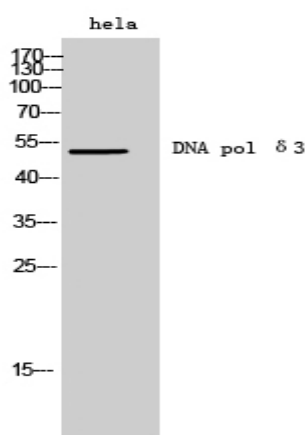


DNA pol δ3 Polyclonal Antibody

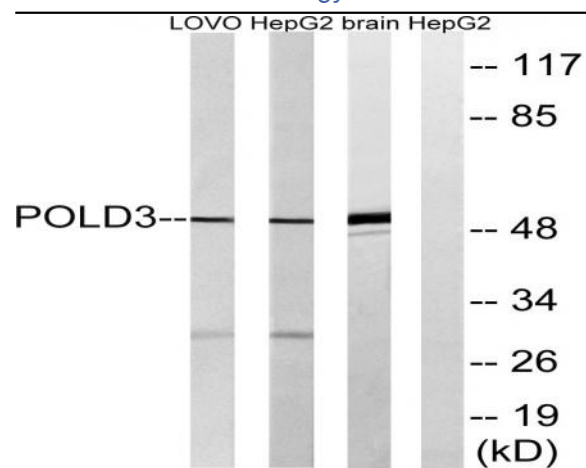
Catalog No :	YT1372
Reactivity :	Human;Mouse;Rat
Applications :	WB;ELISA
Target :	DNA pol δ3
Fields :	>>DNA replication;>>Base excision repair;>>Nucleotide excision repair;>>Mismatch repair;>>Homologous recombination
Gene Name :	POLD3
Protein Name :	DNA polymerase delta subunit 3
Human Gene Id :	10714
Human Swiss Prot No :	Q15054
Mouse Swiss Prot No :	Q9EQ28
Immunogen :	The antiserum was produced against synthesized peptide derived from human POLD3. AA range:411-460
Specificity :	DNA pol δ3 Polyclonal Antibody detects endogenous levels of DNA pol δ3 protein.
Formulation :	Liquid in PBS containing 50% glycerol, 0.5% BSA and 0.02% sodium azide.
Source :	Polyclonal, Rabbit,IgG
Dilution :	WB 1:500 - 1:2000. ELISA: 1:20000. Not yet tested in other applications.
Purification :	The antibody was affinity-purified from rabbit antiserum by affinity-chromatography using epitope-specific immunogen.
Concentration :	1 mg/ml

Storage Stability :	-15°C to -25°C/1 year(Do not lower than -25°C)
Observed Band :	51kD
Cell Pathway :	Purine metabolism;Pyrimidine metabolism;DNA replication;Base excision repair;Nucleotide excision repair;Mismatch repair;Homologous recombination;
Background :	This gene encodes the 66-kDa subunit of DNA polymerase delta. DNA polymerase delta possesses both polymerase and 3' to 5' exonuclease activity and plays a critical role in DNA replication and repair. The encoded protein plays a role in regulating the activity of DNA polymerase delta through interactions with other subunits and the processivity cofactor proliferating cell nuclear antigen (PCNA). Alternatively spliced transcript variants have been observed for this gene. [provided by RefSeq, Mar 2012],
Function :	function:Required for optimal DNA polymerase delta activity.,subunit:Heterotetramer composed of subunits of 125 kDa, 50 kDa, 66 kDa and 12 kDa. Interacts with POLD2. Interacts with PCNA.,
Subcellular Location :	Cytoplasm . Nucleus . Partially colocalizes with PCNA and POLD1 at S phase replication sites (PubMed:11595739). Recruited to DNA damage sites within 2 hours following UV irradiation (PubMed:20227374, PubMed:22801543). .
Expression :	Bone marrow,Brain,Duodenum,Embryonic kidney,Epithelium,Lymp

Products Images



Western Blot analysis of hela cells using DNA pol δ3 Polyclonal Antibody diluted at 1:500 cells nucleus extracted by Minute TM Cytoplasmic and Nuclear Fractionation kit (SC-003, Invent biotech, MN, USA).



Western blot analysis of lysates from LOVO, HepG2, and mouse brain cells, using POLD3 Antibody. The lane on the right is blocked with the synthesized peptide.