

EGFL5 Polyclonal Antibody

Catalog No :	YT1483
Reactivity :	Human;Mouse;Rat
Applications :	WB;ELISA
Target :	EGFL5
Gene Name :	MEGF9
Protein Name :	Multiple epidermal growth factor-like domains protein 9
Human Gene Id :	1955
Human Swiss Prot No :	Q9H1U4
Mouse Gene Id :	230316
Mouse Swiss Prot No :	Q8BH27
Immunogen :	The antiserum was produced against synthesized peptide derived from human MEGF9. AA range:383-432
Specificity :	EGFL5 Polyclonal Antibody detects endogenous levels of EGFL5 protein.
Formulation :	Liquid in PBS containing 50% glycerol, 0.5% BSA and 0.02% sodium azide.
Source :	Polyclonal, Rabbit,IgG
Dilution :	WB 1:500 - 1:2000. ELISA: 1:40000. Not yet tested in other applications.
Purification :	The antibody was affinity-purified from rabbit antiserum by affinity-chromatography using epitope-specific immunogen.
Concentration :	1 mg/ml
Storage Stability :	-15°C to -25°C/1 year(Do not lower than -25°C)

Observed Band : 63kD

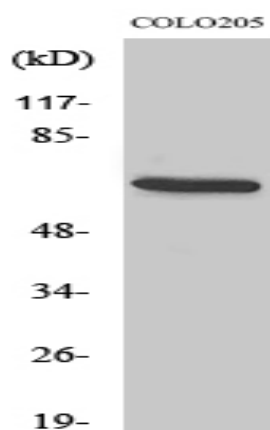
Background : caution:It is uncertain whether Met-1 or Met-9 is the initiator.,polymorphism:The poly-Ala stretch (positions 24 to 31) may be polymorphic and varies from 6 to 8 Ala residues.,sequence caution:Intron retention.,similarity:Contains 5 laminin EGF-like domains.,

Function : caution:It is uncertain whether Met-1 or Met-9 is the initiator.,polymorphism:The poly-Ala stretch (positions 24 to 31) may be polymorphic and varies from 6 to 8 Ala residues.,sequence caution:Intron retention.,similarity:Contains 5 laminin EGF-like domains.,

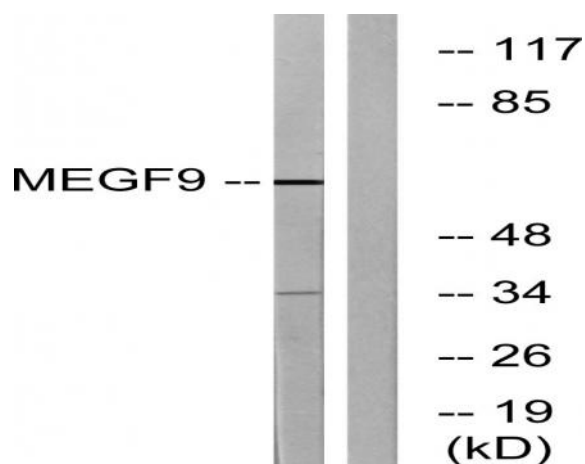
Subcellular Location : Membrane ; Single-pass type I membrane protein .

Expression : Brain,

Products Images



Western Blot analysis of various cells using EGFL5 Polyclonal Antibody diluted at 1:500



Western blot analysis of lysates from COLO cells, using MEGF9 Antibody. The lane on the right is blocked with the synthesized peptide.