

## Dorfin Polyclonal Antibody

<b>Catalog No :</b>	YT1404
<b>Reactivity :</b>	Human;Mouse
<b>Applications :</b>	WB;ELISA
<b>Target :</b>	Dorfin
<b>Gene Name :</b>	RNF19A
<b>Protein Name :</b>	E3 ubiquitin-protein ligase RNF19A
<b>Human Gene Id :</b>	25897
<b>Human Swiss Prot No :</b>	Q9NV58
<b>Mouse Gene Id :</b>	30945
<b>Mouse Swiss Prot No :</b>	P50636
<b>Immunogen :</b>	The antiserum was produced against synthesized peptide derived from human RNF19A. AA range:51-100
<b>Specificity :</b>	Dorfin Polyclonal Antibody detects endogenous levels of Dorfin protein.
<b>Formulation :</b>	Liquid in PBS containing 50% glycerol, 0.5% BSA and 0.02% sodium azide.
<b>Source :</b>	Polyclonal, Rabbit,IgG
<b>Dilution :</b>	WB 1:500 - 1:2000. ELISA: 1:40000. Not yet tested in other applications.
<b>Purification :</b>	The antibody was affinity-purified from rabbit antiserum by affinity-chromatography using epitope-specific immunogen.
<b>Concentration :</b>	1 mg/ml
<b>Storage Stability :</b>	-15°C to -25°C/1 year(Do not lower than -25°C)

**Observed Band :** 90kD

### Background :

This gene encodes a member of the ring between ring fingers (RBR) protein family, and the encoded protein contains two RING-finger motifs and an in between RING fingers motif. This protein is an E3 ubiquitin ligase that is localized to Lewy bodies, and ubiquitylates synphilin-1, which is an interacting protein of alpha synuclein in neurons. The encoded protein may be involved in amyotrophic lateral sclerosis and Parkinson's disease. Alternative splicing results in multiple transcript variants. [provided by RefSeq, Jul 2013],

### Function :

function:E3 ubiquitin-protein ligase which accepts ubiquitin from E2 ubiquitin-conjugating enzymes UBE2L3 and UBE2L6 in the form of a thioester and then directly transfers the ubiquitin to targeted substrates, such as SNCAIP or CASR. Specifically ubiquitinates pathogenic SOD1 variants, which leads to their proteasomal degradation and to neuronal protection.,pathway:Protein modification; protein ubiquitination.,PTM:Phosphorylated upon DNA damage, probably by ATM or ATR.,similarity:Belongs to the RBR family. RNF19 subfamily.,similarity:Contains 1 IBR-type zinc finger.,similarity:Contains 2 RING-type zinc fingers.,subcellular location:Present in the hyaline inclusion bodies specifically found in motor neurons from amyotrophic lateral sclerosis patients. Present in the Lewy bodies specifically found in neurons from Parkinson disease patients.,subunit:Interacts with UBE2L3 and UBE2L6. Interac

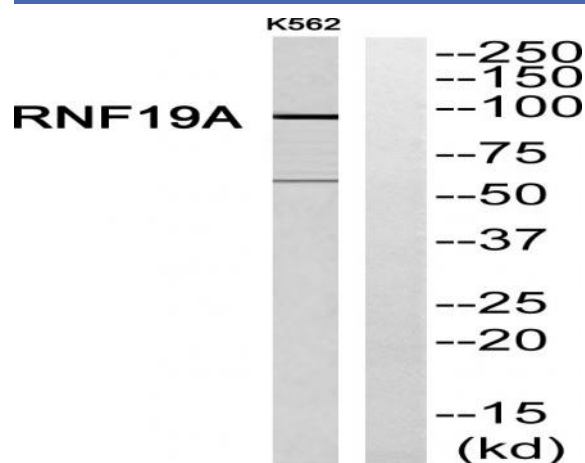
### Subcellular Location :

Membrane ; Multi-pass membrane protein . Cytoplasm, cytoskeleton, microtubule organizing center, centrosome . Present in the hyaline inclusion bodies specifically found in motor neurons from amyotrophic lateral sclerosis patients. Present in the Lewy bodies specifically found in neurons from Parkinson disease patients.

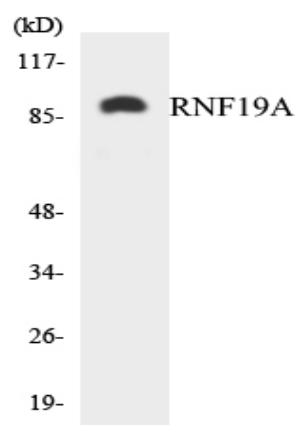
### Expression :

Widely expressed, with highest levels in heart. Ubiquitously expressed in the central nervous system.

## Products Images



Western blot analysis of RNF19A Antibody. The lane on the right is blocked with the RNF19A peptide.



Western blot analysis of the lysates from Jurkat cells using RNF19A antibody.