

## CMTM4 Polyclonal Antibody

<b>Catalog No :</b>	YT0986
<b>Reactivity :</b>	Human;Mouse
<b>Applications :</b>	WB;IHC;IF;ELISA
<b>Target :</b>	CMTM4
<b>Gene Name :</b>	CMTM4
<b>Protein Name :</b>	CKLF-like MARVEL transmembrane domain-containing protein 4
<b>Human Gene Id :</b>	146223
<b>Human Swiss Prot No :</b>	Q8IZR5
<b>Mouse Gene Id :</b>	97487
<b>Mouse Swiss Prot No :</b>	Q8CJ61
<b>Immunogen :</b>	The antiserum was produced against synthesized peptide derived from human CKLF4. AA range:161-210
<b>Specificity :</b>	CMTM4 Polyclonal Antibody detects endogenous levels of CMTM4 protein.
<b>Formulation :</b>	Liquid in PBS containing 50% glycerol, 0.5% BSA and 0.02% sodium azide.
<b>Source :</b>	Polyclonal, Rabbit,IgG
<b>Dilution :</b>	WB 1:500 - 1:2000. IHC: 1:100-300 ELISA: 1:20000. IF 1:100-300 Not yet tested in other applications.
<b>Purification :</b>	The antibody was affinity-purified from rabbit antiserum by affinity-chromatography using epitope-specific immunogen.
<b>Concentration :</b>	1 mg/ml
<b>Storage Stability :</b>	-15°C to -25°C/1 year(Do not lower than -25°C)

**Observed Band :** 26kD

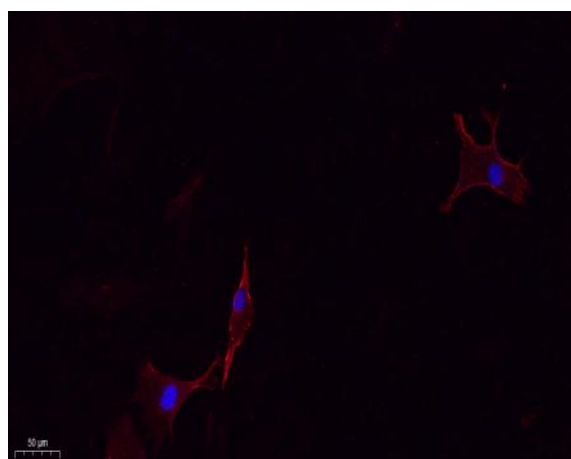
**Background :** This gene belongs to the chemokine-like factor gene superfamily, a novel family that is similar to the chemokine and the transmembrane 4 superfamilies of signaling molecules. This gene is one of several chemokine-like factor genes located in a cluster on chromosome 16. Alternatively spliced transcript variants encoding different isoforms have been identified. [provided by RefSeq, Jul 2008],

**Function :** similarity:Belongs to the chemokine-like factor family.,similarity:Contains 1 MARVEL domain.,tissue specificity:Highly expressed in testis and prostate.,

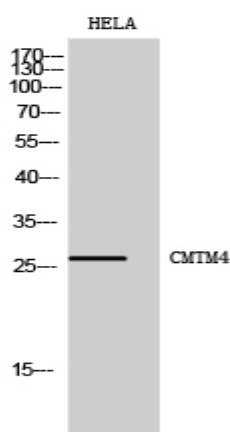
**Subcellular Location :** Membrane ; Multi-pass membrane protein .

**Expression :** Highly expressed in testis and prostate.

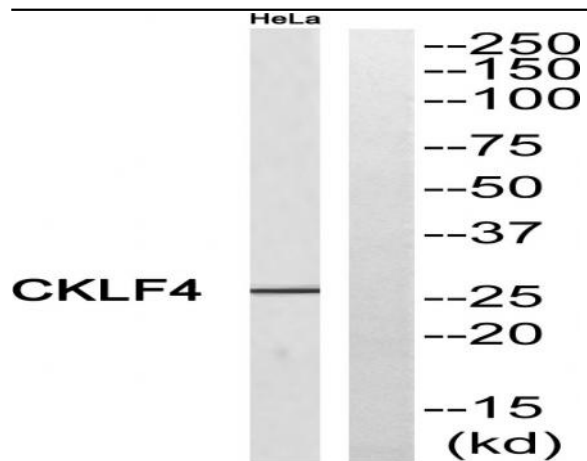
## Products Images



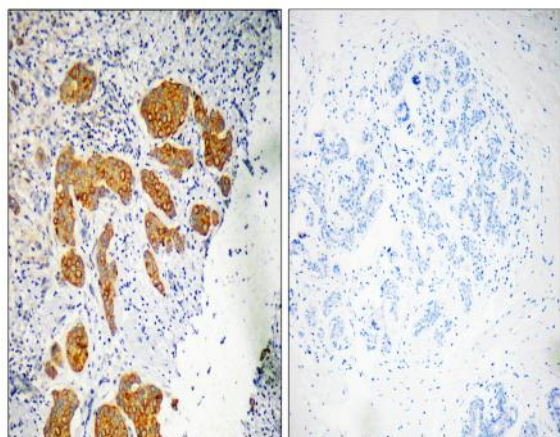
Immunofluorescence analysis of A549. 1,primary Antibody(red) was diluted at 1:200(4°C overnight). 2, Goat Anti Rabbit IgG (H&L) - Alexa Fluor 594 Secondary antibody was diluted at 1:1000(room temperature, 50min).3, Picture B: DAPI(blue) 10min.



Western Blot analysis of HELA cells using CMTM4 Polyclonal Antibody



Western blot analysis of CKLF4 Antibody. The lane on the right is blocked with the CKLF4 peptide.



Immunohistochemistryt analysis of paraffin-embedded human breast carcinoma, using CKLF4 Antibody. The lane on the right is blocked with the CKLF4 peptide.