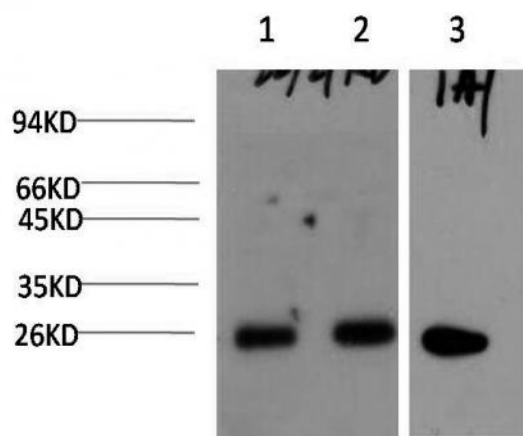


P27 Kip1 Mouse mAb(1A7)

Catalog No :	YM33075
Reactivity :	Human;Mouse;Rat
Applications :	IHC;WB
Target :	P27 Kip1
Gene Name :	P27 Kip1
Protein Name :	P27 Kip1
Human Swiss Prot No :	P45627
Immunogen :	Synthesized peptide derived from human P27 Kip1
Specificity :	This antibody detects endogenous levels of P27 Kip1 at Human, Mouse,Rat
Formulation :	Liquid in PBS containing 50% glycerol, 0.5% BSA and 0.02% sodium azide.
Source :	Monoclonal, Mouse
Dilution :	IHC1:50-200 ,WB 1:1000-2000
Purification :	The antibody was affinity-purified from mouse ascites by affinity-chromatography using specific immunogen.
Concentration :	1 mg/ml
Storage Stability :	-15°C to -25°C/1 year(Do not lower than -25°C)
Observed Band :	27kD
Background :	Cyclin dependent kinase inhibitor 1B(CDKN1B) Homo sapiens This gene encodes a cyclin-dependent kinase inhibitor, which shares a limited similarity with CDK inhibitor CDKN1A/p21. The encoded protein binds to and prevents the activation of cyclin E-CDK2 or cyclin D-CDK4 complexes, and thus controls the cell cycle progression at G1. The degradation of this protein, which is triggered by

its CDK dependent phosphorylation and subsequent ubiquitination by SCF complexes, is required for the cellular transition from quiescence to the proliferative state.

Products Images



Western blot analysis of 1)MCF7 Cell, 2) HepG2 Cell, 3) C2C12 Cell Lysate using p27 Kip1 Mouse Monoclonal mAb diluted at 1:2,000.