

HSP40 Mouse mAb(Mix-mA)

Catalog No :	YM33073
Reactivity :	Human;Mouse;Rat
Applications :	IHC;WB
Target :	HSP40
Fields :	>>Protein processing in endoplasmic reticulum;>>Influenza A
Gene Name :	DNAJB1 DNAJ1 HDJ1 HSPF1
Protein Name :	HSP40
Human Gene Id :	3337
Human Swiss Prot No :	P25685
Mouse Gene Id :	81489
Mouse Swiss Prot No :	Q9QYJ3
Immunogen :	Synthesized peptide derived from human HSP40
Specificity :	This antibody detects endogenous levels of HSP40 at Human, Mouse,Rat
Formulation :	Liquid in PBS containing 50% glycerol, 0.5% BSA and 0.02% sodium azide.
Source :	Monoclonal, Mouse
Dilution :	IHC1:50-200 ,WB 1:1000-2000
Purification :	The antibody was affinity-purified from mouse ascites by affinity-chromatography using specific immunogen.
Concentration :	1 mg/ml

Storage Stability : -15°C to -25°C/1 year (Do not lower than -25°C)

Observed Band : 40kD

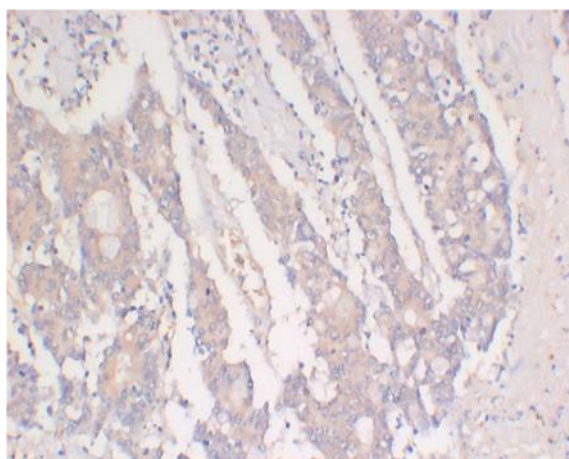
Background : This gene encodes a member of the DnaJ or Hsp40 (heat shock protein 40 kD) family of proteins. DNAJ family members are characterized by a highly conserved amino acid stretch called the 'J-domain' and function as one of the two major classes of molecular chaperones involved in a wide range of cellular events, such as protein folding and oligomeric protein complex assembly. The encoded protein is a molecular chaperone that stimulates the ATPase activity of Hsp70 heat-shock proteins in order to promote protein folding and prevent misfolded protein aggregation. Alternative splicing results in multiple transcript variants. [provided by RefSeq, Sep 2015],

Function : function:Interacts with HSP70 and can stimulate its ATPase activity. Stimulates the association between HSC70 and HIP.,induction:By heat shock.,similarity:Contains 1 J domain.,subcellular location:Translocates rapidly from the cytoplasm to the nucleus, and especially to the nucleoli, upon heat shock.,subunit:Interacts with DNAJC3.,

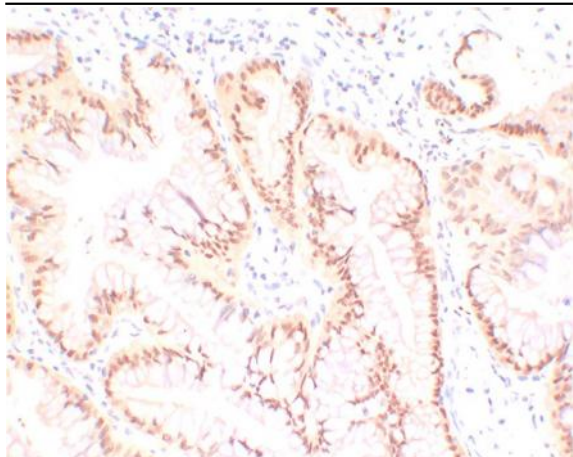
Subcellular Location : Cytoplasm . Nucleus . Nucleus, nucleolus . Translocates rapidly from the cytoplasm to the nucleus, and especially to the nucleoli, upon heat shock.

Expression : Brain,Heart,Lung,Placenta,

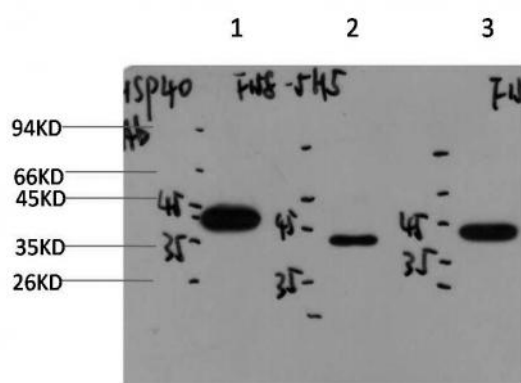
Products Images



Immunohistochemical analysis of paraffin-embedded Human Colon Carcinoma Tissue using HSP40 Mouse Monoclonal antibody diluted at 1:200.



Immunohistochemical analysis of paraffin-embedded Human Lung Carcinoma Tissue using HSP40 Mouse Monoclonal antibody diluted at 1:200.



Western blot analysis of 1) Hela Cell, 2) Mouse Liver, 3) PC12 Cell Lysate using HSP40 Mouse Monoclonal mAb diluted at 1:2,000.