

14-3-3 eta Mouse mAb(5B2)

Catalog No :	YM3800
Reactivity :	Human;Mouse;Rat
Applications :	WB;IHC
Target :	14-3-3 eta
Gene Name :	YWHAH YWHA1
Protein Name :	14-3-3 eta
Human Gene Id :	7533
Human Swiss Prot No :	Q04917
Mouse Gene Id :	22629
Mouse Swiss Prot No :	P68510
Rat Gene Id :	25576
Rat Swiss Prot No :	P68511
Immunogen :	Synthesized peptide derived from human 14-3-3 eta
Specificity :	This antibody detects endogenous levels of 14-3-3 eta at Human, Mouse,Rat
Formulation :	Liquid in PBS containing 50% glycerol, and 0.02% sodium azide.
Source :	Mouse,monoclonal
Dilution :	WB 1:500-2000 IHC 1:50-200
Purification :	The antibody was affinity-purified from mouse ascites by affinity-chromatography using epitope-specific immunogen.

Concentration : 1 mg/ml

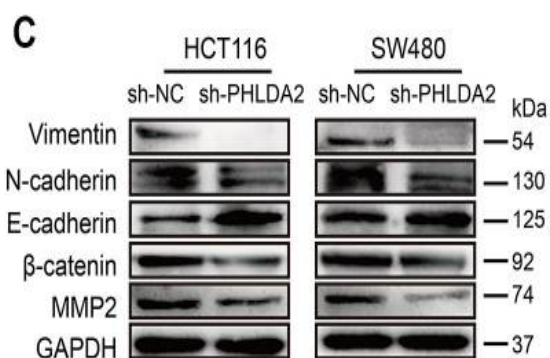
Storage Stability : -15°C to -25°C/1 year(Do not lower than -25°C)

Observed Band : 28kD

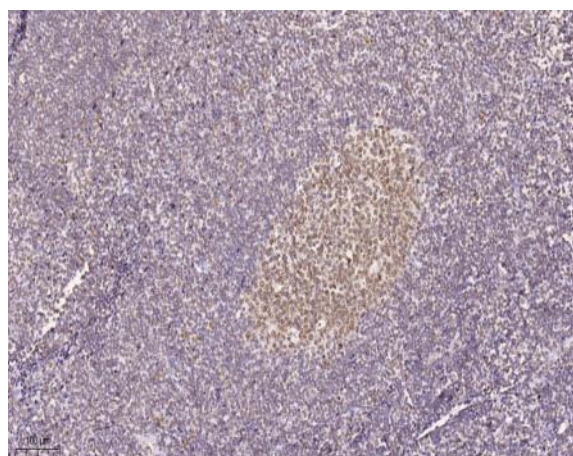
Function : function:Adapter protein implicated in the regulation of a large spectrum of both general and specialized signaling pathway. Binds to a large number of partners, usually by recognition of a phosphoserine or phosphothreonine motif. Binding generally results in the modulation of the activity of the binding partner.,similarity:Belongs to the 14-3-3 family.,subunit:Homodimer (By similarity). Interacts with many nuclear hormone receptors and cofactors including AR, ESR1, ESR2, MC2R, NR3C1, NRIP1, PPARBP and THRA. Interacts with ABL1 (phosphorylated form); the interaction retains it in the cytoplasm. Interacts with RGNEF and PCTK1 (By similarity). Weakly interacts with CDKN1B.,tissue specificity:Expressed mainly in the brain and present in other tissues albeit at lower levels.,

Expression : Expressed mainly in the brain and present in other tissues albeit at lower levels.

Products Images



Ma, Zhan, Shuping Lou, and Zheng Jiang. "PHLDA2 regulates EMT and autophagy in colorectal cancer via the PI3K/AKT signaling pathway." Aging (Albany NY) 12.9 (2020): 7985.



Immunohistochemical analysis of paraffin-embedded human tonsil. 1, Tris-EDTA,pH9.0 was used for antigen retrieval. 2 Antibody was diluted at 1:200(4° overnight.3,Secondary antibody was diluted at 1:200(room temperature, 45min).