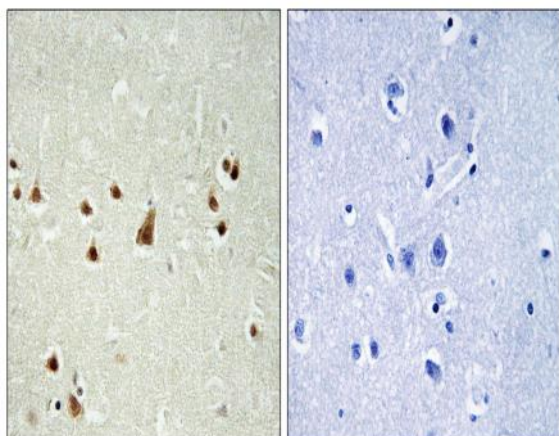


ANKRD26 Polyclonal Antibody

Catalog No :	YT0231
Reactivity :	Human;Rat;Mouse;
Applications :	IHC;IF;ELISA
Target :	ANKRD26
Gene Name :	ANKRD26
Protein Name :	Ankyrin repeat domain-containing protein 26
Human Gene Id :	22852
Human Swiss Prot No :	Q9UPS8
Mouse Swiss Prot No :	Q811D2
Immunogen :	The antiserum was produced against synthesized peptide derived from human ANKRD26. AA range:791-840
Specificity :	ANKRD26 Polyclonal Antibody detects endogenous levels of ANKRD26 protein.
Formulation :	Liquid in PBS containing 50% glycerol, 0.5% BSA and 0.02% sodium azide.
Source :	Polyclonal, Rabbit,IgG
Dilution :	IHC 1:100 - 1:300. ELISA: 1:5000.. IF 1:50-200
Purification :	The antibody was affinity-purified from rabbit antiserum by affinity-chromatography using epitope-specific immunogen.
Concentration :	1 mg/ml
Storage Stability :	-15°C to -25°C/1 year(Do not lower than -25°C)
Molecularweight :	196kD

Background :	This gene encodes a protein containing N-terminal ankyrin repeats which function in protein-protein interactions. Mutations in this gene are associated with autosomal dominant thrombocytopenia-2. Pseudogenes of this gene are found on chromosome 7, 10, 13 and 16. Multiple transcript variants encoding different isoforms have been found for this gene. [provided by RefSeq, Dec 2011],
Function :	PTM:Phosphorylated upon DNA damage, probably by ATM or ATR.,similarity:Contains 5 ANK repeats.,
Subcellular Location :	centrosome,
Expression :	Brain,Embryo,Epithelium,Lymph,Melanoma,Testis,Trachea,
Sort :	2037
No4 :	1

Products Images



Immunohistochemistry analysis of paraffin-embedded human brain, using ANKRD26 Antibody. The picture on the right is blocked with the synthesized peptide.