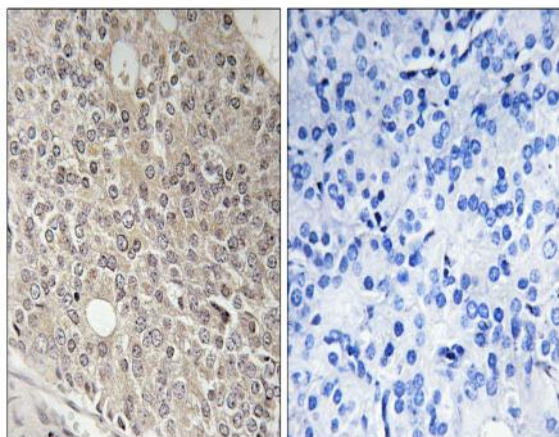


Angiotensin-L1 Polyclonal Antibody

Catalog No :	YT0228
Reactivity :	Human;Mouse
Applications :	IHC;IF;ELISA
Target :	Angiotensin-L1
Fields :	>>Tight junction
Gene Name :	AMOTL1
Protein Name :	Angiotensin-like protein 1
Human Gene Id :	154810
Human Swiss Prot No :	Q8IY63
Mouse Gene Id :	75723
Mouse Swiss Prot No :	Q9D4H4
Immunogen :	The antiserum was produced against synthesized peptide derived from human AMOTL1. AA range:441-490
Specificity :	Angiotensin-L1 Polyclonal Antibody detects endogenous levels of Angiotensin-L1 protein.
Formulation :	Liquid in PBS containing 50% glycerol, 0.5% BSA and 0.02% sodium azide.
Source :	Polyclonal, Rabbit,IgG
Dilution :	IHC 1:100 - 1:300. ELISA: 1:10000.. IF 1:50-200
Purification :	The antibody was affinity-purified from rabbit antiserum by affinity-chromatography using epitope-specific immunogen.
Concentration :	1 mg/ml

Storage Stability :	-15 °C to -25 °C/1 year(Do not lower than -25 °C)
Molecularweight :	107kD
Cell Pathway :	Tight junction;
Background :	The protein encoded by this gene is a peripheral membrane protein that is a component of tight junctions or TJs. TJs form an apical junctional structure and act to control paracellular permeability and maintain cell polarity. This protein is related to angiomin, an angiostatin binding protein that regulates endothelial cell migration and capillary formation. Two transcript variants encoding different isoforms have been found for this gene. [provided by RefSeq, Jul 2014],
Function :	similarity:Belongs to the angiomin family.,
Subcellular Location :	Cell junction, tight junction .
Expression :	Brain,Epithelium,Muscle,Skeletal muscle,Skin,Spleen,Testis,Thymus,
Sort :	2022
No4 :	1

Products Images



Immunohistochemistry analysis of paraffin-embedded human prostate carcinoma tissue, using AMOTL1 Antibody. The picture on the right is blocked with the synthesized peptide.