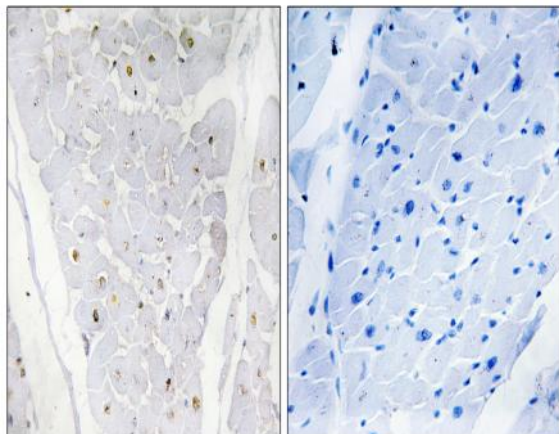


Alpha-protein Kinase 2 Polyclonal Antibody

Catalog No :	YT0200
Reactivity :	Human;Rat;Mouse;
Applications :	IHC;IF;ELISA
Target :	Alpha-protein Kinase 2
Gene Name :	ALPK2
Protein Name :	Alpha-protein kinase 2
Human Gene Id :	115701
Human Swiss Prot No :	Q86TB3
Mouse Swiss Prot No :	Q91ZB0
Immunogen :	The antiserum was produced against synthesized peptide derived from human ALPK2. AA range:1741-1790
Specificity :	Alpha-protein Kinase 2 Polyclonal Antibody detects endogenous levels of Alpha-protein Kinase 2 protein.
Formulation :	Liquid in PBS containing 50% glycerol, 0.5% BSA and 0.02% sodium azide.
Source :	Polyclonal, Rabbit,IgG
Dilution :	IHC 1:100 - 1:300. ELISA: 1:40000.. IF 1:50-200
Purification :	The antibody was affinity-purified from rabbit antiserum by affinity-chromatography using epitope-specific immunogen.
Concentration :	1 mg/ml
Storage Stability :	-15°C to -25°C/1 year(Do not lower than -25°C)
Molecularweight :	210kD

Background :	function:Kinases that recognize phosphorylation sites in which the surrounding peptides have an alpha-helical conformation.,similarity:Belongs to the protein kinase superfamily. Alpha-type protein kinase family. ALPK subfamily.,similarity:Contains 1 alpha-type protein kinase domain.,similarity:Contains 1 Ig-like (immunoglobulin-like) domain.,
Function :	function:Kinases that recognize phosphorylation sites in which the surrounding peptides have an alpha-helical conformation.,similarity:Belongs to the protein kinase superfamily. Alpha-type protein kinase family. ALPK subfamily.,similarity:Contains 1 alpha-type protein kinase domain.,similarity:Contains 1 Ig-like (immunoglobulin-like) domain.,
Subcellular Location :	Basolateral cell membrane .
Expression :	Expressed in developing cardiac tissue and cardiomyocytes (at protein level).
Sort :	1920
No4 :	1

Products Images



Immunohistochemistry analysis of paraffin-embedded human heart , using ALPK2 Antibody. The picture on the right is blocked with the synthesized peptide.