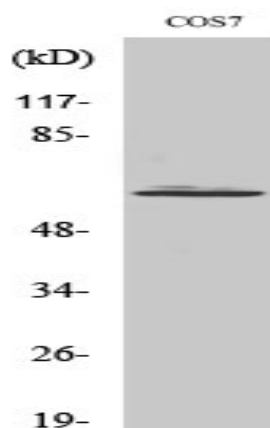


Arylsulfatase I Polyclonal Antibody

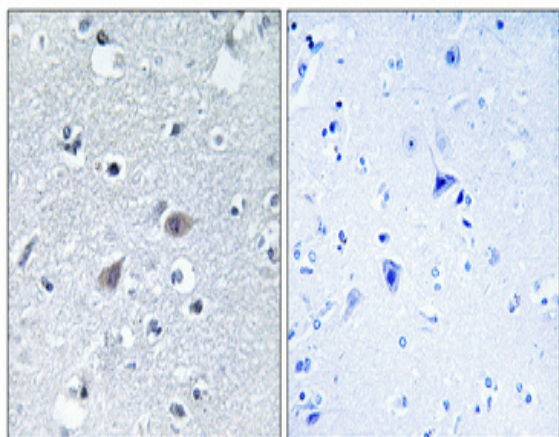
Catalog No :	YT0352
Reactivity :	Human;Monkey
Applications :	WB;IHC;IF;ELISA
Target :	Arylsulfatase I
Gene Name :	ARSI
Protein Name :	Arylsulfatase I
Human Gene Id :	340075
Human Swiss Prot No :	Q5FYB1
Mouse Swiss Prot No :	Q32KI9
Immunogen :	The antiserum was produced against synthesized peptide derived from human ARSI. AA range:311-360
Specificity :	Arylsulfatase I Polyclonal Antibody detects endogenous levels of Arylsulfatase I protein.
Formulation :	Liquid in PBS containing 50% glycerol, 0.5% BSA and 0.02% sodium azide.
Source :	Polyclonal, Rabbit,IgG
Dilution :	WB 1:500 - 1:2000. IHC 1:100 - 1:300. IF 1:200 - 1:1000. ELISA: 1:40000. Not yet tested in other applications.
Purification :	The antibody was affinity-purified from rabbit antiserum by affinity-chromatography using epitope-specific immunogen.
Concentration :	1 mg/ml
Storage Stability :	-15°C to -25°C/1 year(Do not lower than -25°C)

Observed Band :	64kD
Background :	This gene encodes a protein that belongs to a large family of sulfatases that hydrolyze sulfate esters and sulfamates. Members of this family play a role in several cellular processes, including hormone synthesis, cell signaling in development and degradation of macromolecules. The protein encoded by this gene is thought to be secreted, and to function in extracellular space. [provided by RefSeq, Jul 2016],
Function :	cofactor: Binds 1 calcium ion per subunit., PTM: The conversion to 3-oxoalanine (also known as C-formylglycine, FGly), of a serine or cysteine residue in prokaryotes and of a cysteine residue in eukaryotes, is critical for catalytic activity., similarity: Belongs to the sulfatase family.,
Subcellular Location :	Secreted . Endoplasmic reticulum . Localized in the intracellular granular structures.
Expression :	Expressed in placenta, in embryonic stem cells, fetal eyes and lens.
Sort :	2294
No4 :	1
Host :	Rabbit
Modifications :	Unmodified

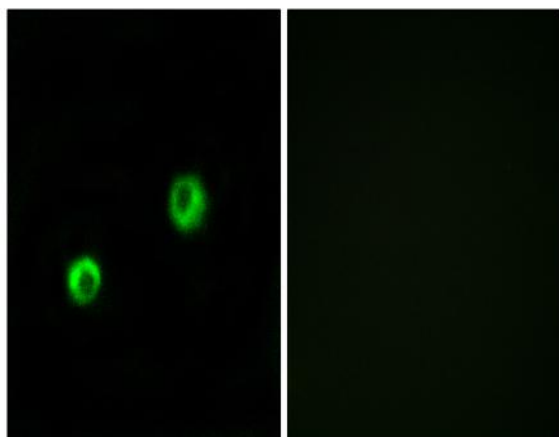
Products Images



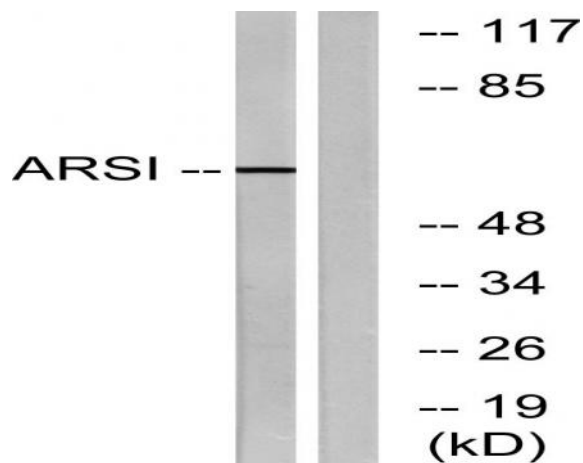
Western Blot analysis of various cells using Arylsulfatase I Polyclonal Antibody



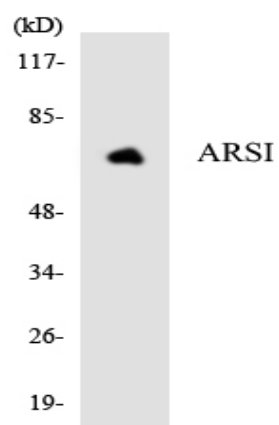
Immunohistochemical analysis of paraffin-embedded Human brain. Antibody was diluted at 1:100(4° overnight). High-pressure and temperature Tris-EDTA,pH8.0 was used for antigen retrieval. Negative control (right) obtained from antibody was pre-absorbed by immunogen peptide.



Immunofluorescence analysis of MCF7 cells, using ARSI Antibody. The picture on the right is blocked with the synthesized peptide.



Western blot analysis of lysates from COS7 cells, using ARSI Antibody. The lane on the right is blocked with the synthesized peptide.



Western blot analysis of the lysates from HepG2 cells using ARSI antibody.