

## Arylsulfatase F Polyclonal Antibody

<b>Catalog No :</b>	YT0350
<b>Reactivity :</b>	Human;Monkey
<b>Applications :</b>	WB;IHC;IF;ELISA
<b>Target :</b>	Arylsulfatase F
<b>Gene Name :</b>	ARSF
<b>Protein Name :</b>	Arylsulfatase F
<b>Human Gene Id :</b>	416
<b>Human Swiss Prot No :</b>	P54793
<b>Immunogen :</b>	The antiserum was produced against synthesized peptide derived from human ARSF. AA range:301-350
<b>Specificity :</b>	Arylsulfatase F Polyclonal Antibody detects endogenous levels of Arylsulfatase F protein.
<b>Formulation :</b>	Liquid in PBS containing 50% glycerol, 0.5% BSA and 0.02% sodium azide.
<b>Source :</b>	Polyclonal, Rabbit,IgG
<b>Dilution :</b>	WB 1:500 - 1:2000. IHC 1:100 - 1:300. ELISA: 1:40000.. IF 1:50-200
<b>Purification :</b>	The antibody was affinity-purified from rabbit antiserum by affinity-chromatography using epitope-specific immunogen.
<b>Concentration :</b>	1 mg/ml
<b>Storage Stability :</b>	-15°C to -25°C/1 year(Do not lower than -25°C)
<b>Observed Band :</b>	60kD
<b>Background :</b>	This gene is a member of the sulfatase family, and more specifically, the

arylsulfatase subfamily. Members of the subfamily share similarity in sequence and splice sites, and are clustered together on chromosome X, suggesting that they are derived from recent gene duplication events. Sulfatases are essential for the correct composition of bone and cartilage matrix. The activity of this protein, unlike that of arylsulfatase E, is not inhibited by warfarin. Multiple alternatively spliced variants, encoding the same protein, have been identified.[provided by RefSeq, Jan 2011],

### Function :

cofactor: Binds 1 calcium ion per subunit., enzyme regulation: Not inhibited by DHEAS or warfarin., PTM: The conversion to 3-oxoalanine (also known as C-formylglycine, FGly), of a serine or cysteine residue in prokaryotes and of a cysteine residue in eukaryotes, is critical for catalytic activity., similarity: Belongs to the sulfatase family.,

### Subcellular Location :

Secreted .

### Expression :

Fetal brain, Kidney,

### Sort :

2292

### No4 :

1

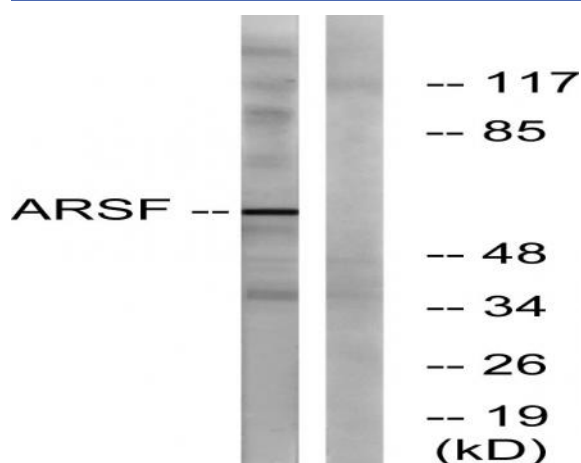
### Host :

Rabbit

### Modifications :

Unmodified

## Products Images



Western blot analysis of lysates from COS7 cells, using ARSF Antibody. The lane on the right is blocked with the synthesized peptide.