

AKAP 110 Polyclonal Antibody

Catalog No :	YT0160
Reactivity :	Human;Mouse
Applications :	IF;ELISA
Target :	AKAP 110
Gene Name :	AKAP3
Protein Name :	A-kinase anchor protein 3
Human Gene Id :	10566
Human Swiss Prot No :	O75969
Mouse Gene Id :	11642
Mouse Swiss Prot No :	O88987
Immunogen :	The antiserum was produced against synthesized peptide derived from human AKAP3. AA range:191-240
Specificity :	AKAP 110 Polyclonal Antibody detects endogenous levels of AKAP 110 protein.
Formulation :	Liquid in PBS containing 50% glycerol, 0.5% BSA and 0.02% sodium azide.
Source :	Polyclonal, Rabbit,IgG
Dilution :	IF 1:200 - 1:1000. ELISA: 1:10000. Not yet tested in other applications.
Purification :	The antibody was affinity-purified from rabbit antiserum by affinity-chromatography using epitope-specific immunogen.
Concentration :	1 mg/ml
Storage Stability :	-15°C to -25°C/1 year(Do not lower than -25°C)

Molecularweight : 95kD

Background : This gene encodes a member of A-kinase anchoring proteins (AKAPs), a family of functionally related proteins that target protein kinase A to discrete locations within the cell. The encoded protein is reported to participate in protein-protein interactions with the R-subunit of the protein kinase A as well as sperm-associated proteins. This protein is expressed in spermatozoa and localized to the acrosomal region of the sperm head as well as the length of the principal piece. It may function as a regulator of motility, capacitation, and the acrosome reaction. [provided by RefSeq, May 2013],

Function : domain:RII-binding site, predicted to form an amphipathic helix, could participate in protein-protein interactions with a complementary surface on the R-subunit dimer.,function:May function as a regulator of both motility- and head-associated functions such as capacitation and the acrosome reaction.,PTM:Phosphorylated on tyrosine residues.,similarity:Belongs to the AKAP110 family.,subcellular location:Ribs of the fibrous sheath in the principal piece of the sperm tail. Dorsal margin of the acrosomal segment.,subunit:Interacts with ROPN1 AND ROPN1L.,tissue specificity:Testis specific; only expressed in spermatids.,

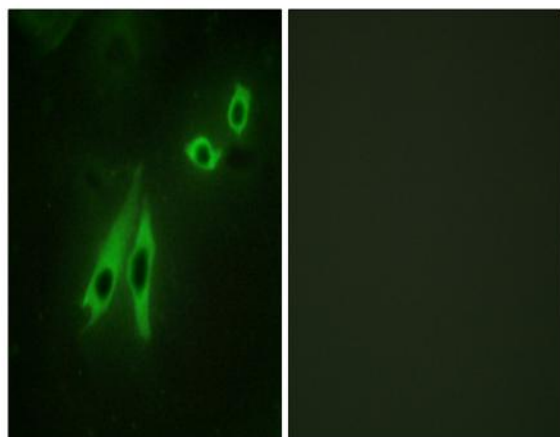
Subcellular Location : Cytoplasmic vesicle, secretory vesicle, acrosome . Ribs of the fibrous sheath in the principal piece of the sperm tail. Dorsal margin of the acrosomal segment.

Expression : Testis specific; only expressed in spermatids.

Sort : 1827

No4 : 1

Products Images



Immunofluorescence analysis of NIH/3T3 cells, using AKAP3 Antibody. The picture on the right is blocked with the synthesized peptide.