

ApoL3 Polyclonal Antibody

Catalog No :	YT0279
Reactivity :	Human;Rat;Mouse;
Applications :	IHC;IF;ELISA
Target :	ApoL3
Gene Name :	APOL3
Protein Name :	Apolipoprotein L3
Human Gene Id :	80833
Human Swiss Prot No :	O95236
Immunogen :	Synthesized peptide derived from ApoL3 . at AA range: 100-180
Specificity :	ApoL3 Polyclonal Antibody detects endogenous levels of ApoL3 protein.
Formulation :	Liquid in PBS containing 50% glycerol, 0.5% BSA and 0.02% sodium azide.
Source :	Polyclonal, Rabbit,IgG
Dilution :	IHC 1:100 - 1:300. ELISA: 1:40000.. IF 1:50-200
Purification :	The antibody was affinity-purified from rabbit antiserum by affinity-chromatography using epitope-specific immunogen.
Concentration :	1 mg/ml
Storage Stability :	-15°C to -25°C/1 year(Do not lower than -25°C)
Molecularweight :	44kD
Background :	This gene is a member of the apolipoprotein L gene family, and it is present in a cluster with other family members on chromosome 22. The encoded protein is found in the cytoplasm, where it may affect the movement of lipids, including

cholesterol, and/or allow the binding of lipids to organelles. In addition, expression of this gene is up-regulated by tumor necrosis factor-alpha in endothelial cells lining the normal and atherosclerotic iliac artery and aorta. Alternative splicing results in multiple transcript variants. [provided by RefSeq, Mar 2015],

Function :

function:May affect the movement of lipids in the cytoplasm or allow the binding of lipids to organelles.,induction:In vitro, is responsive to tumor necrosis factor.,similarity:Belongs to the apolipoprotein L family.,tissue specificity:Widely expressed; the highest levels are in prostate, lung and placenta; also detected in kidney, bone marrow, spleen, thymus, spinal cord, adrenal gland, salivary gland, trachea and mammary gland; levels are low in brain, heart, fetal liver, pancreas and testis.,

Subcellular Location :

Cytoplasm .

Expression :

Widely expressed; the highest levels are in prostate, lung and placenta; also detected in kidney, bone marrow, spleen, thymus, spinal cord, adrenal gland, salivary gland, trachea and mammary gland; levels are low in brain, heart, fetal liver, pancreas and testis.

Sort :

2163

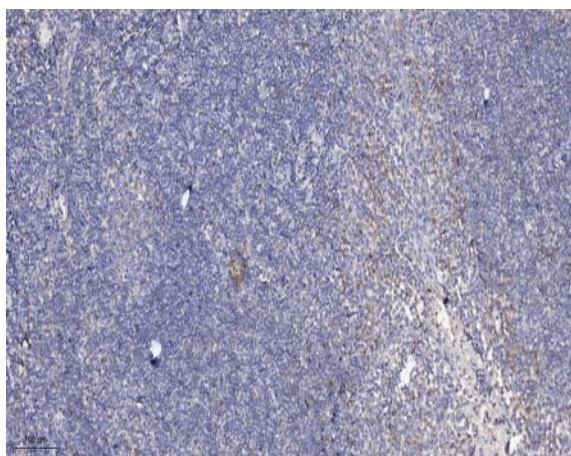
Host :

Rabbit

Modifications :

Unmodified

Products Images



Immunohistochemical analysis of paraffin-embedded human tonsil. 1, Antibody was diluted at 1:200(4° overnight). 2, Tris-EDTA,pH9.0 was used for antigen retrieval. 3,Secondary antibody was diluted at 1:200(room temperature, 30min).