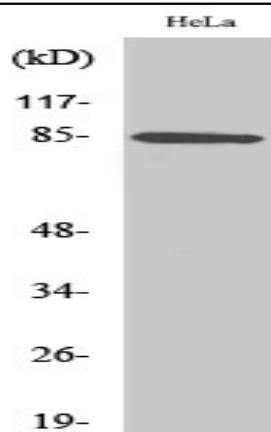


APC5 Polyclonal Antibody

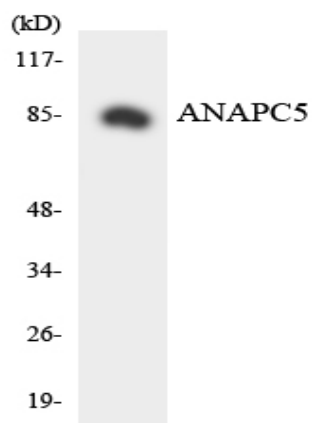
Catalog No :	YT0262
Reactivity :	Human;Rat;Mouse;
Applications :	WB;ELISA
Target :	APC5
Fields :	>>Cell cycle;>>Oocyte meiosis;>>Ubiquitin mediated proteolysis;>>IL-17 signaling pathway;>>Progesterone-mediated oocyte maturation;>>Human T-cell leukemia virus 1 infection
Gene Name :	ANAPC5
Protein Name :	Anaphase-promoting complex subunit 5
Human Gene Id :	51433
Human Swiss Prot No :	Q9UJX4
Mouse Swiss Prot No :	Q8BTZ4
Immunogen :	The antiserum was produced against synthesized peptide derived from human ANAPC5. AA range:151-200
Specificity :	APC5 Polyclonal Antibody detects endogenous levels of APC5 protein.
Formulation :	Liquid in PBS containing 50% glycerol, 0.5% BSA and 0.02% sodium azide.
Source :	Polyclonal, Rabbit,IgG
Dilution :	WB 1:500 - 1:2000. ELISA: 1:5000. Not yet tested in other applications.
Purification :	The antibody was affinity-purified from rabbit antiserum by affinity-chromatography using epitope-specific immunogen.
Concentration :	1 mg/ml

Storage Stability :	-15°C to -25°C/1 year(Do not lower than -25°C)
Observed Band :	85kD
Cell Pathway :	Cell_Cycle_G1S;Cell_Cycle_G2M_DNA;Oocyte meiosis;Ubiquitin mediated proteolysis;Progesterone-mediated oocyte maturation;
Background :	<p>This gene encodes a tetratricopeptide repeat-containing component of the anaphase promoting complex/cyclosome (APC/C), a large E3 ubiquitin ligase that controls cell cycle progression by targeting a number of cell cycle regulators such as B-type cyclins for 26S proteasome-mediated degradation through ubiquitination. The encoded protein is required for the proper ubiquitination function of APC/C and for the interaction of APC/C with transcription coactivators. It also interacts with polyA binding protein and represses internal ribosome entry site-mediated translation. Multiple transcript variants encoding different isoforms have been found for this gene. These differences cause translation initiation at a downstream AUG and result in a shorter protein (isoform b), compared to isoform a. [provided by RefSeq, Nov 2008],</p>
Function :	<p>function:Component of the anaphase promoting complex/cyclosome (APC/C), a cell cycle-regulated ubiquitin ligase that controls progression through mitosis and the G1 phase of the cell cycle.,pathway:Protein modification; protein ubiquitination.,similarity:Belongs to the APC5 family.,similarity:Contains 4 TPR repeats.,subunit:The APC/C is composed of at least 11 subunits.,</p>
Subcellular Location :	Nucleus . Cytoplasm, cytoskeleton, spindle .
Expression :	Brain,Cerebellum,Cervix,Epithelium,Lung,Oesophagus,Periodontal liga
Sort :	2125
Host :	Rabbit
Modifications :	Unmodified

Products Images



Western Blot analysis of various cells using APC5 Polyclonal Antibody



Western blot analysis of the lysates from HeLa cells using ANAPC5 antibody.