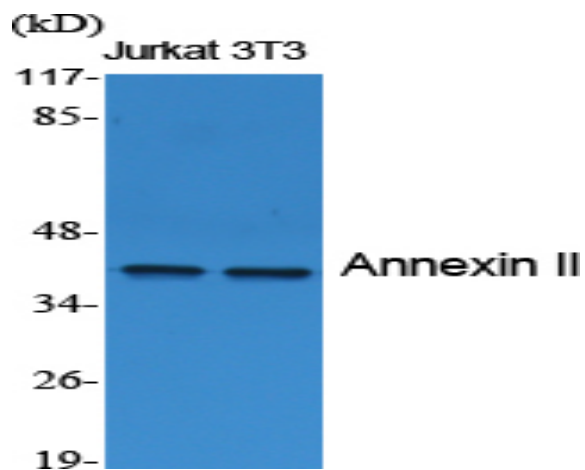


Annexin II Polyclonal Antibody

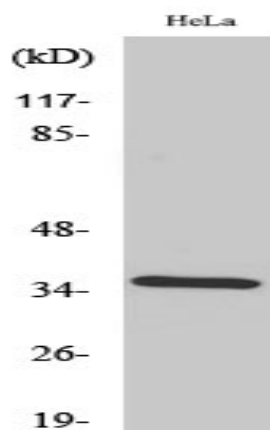
Catalog No :	YT0236
Reactivity :	Human;Mouse;Rat
Applications :	WB;IHC;IF;ELISA
Target :	Annexin II
Fields :	>>Salmonella infection
Gene Name :	ANXA2
Protein Name :	Annexin A2
Human Gene Id :	302
Human Swiss Prot No :	P07355
Mouse Gene Id :	12306
Mouse Swiss Prot No :	P07356
Rat Gene Id :	56611
Rat Swiss Prot No :	Q07936
Immunogen :	The antiserum was produced against synthesized peptide derived from human Annexin II. AA range:88-137
Specificity :	Annexin II Polyclonal Antibody detects endogenous levels of Annexin II protein.
Formulation :	Liquid in PBS containing 50% glycerol, 0.5% BSA and 0.02% sodium azide.
Source :	Polyclonal, Rabbit,IgG
Dilution :	WB 1:500 - 1:2000. IHC 1:100 - 1:300. ELISA: 1:10000.. IF 1:50-200

Purification :	The antibody was affinity-purified from rabbit antiserum by affinity-chromatography using epitope-specific immunogen.
Concentration :	1 mg/ml
Storage Stability :	-15°C to -25°C/1 year(Do not lower than -25°C)
Observed Band :	38kD
Background :	This gene encodes a member of the annexin family. Members of this calcium-dependent phospholipid-binding protein family play a role in the regulation of cellular growth and in signal transduction pathways. This protein functions as an autocrine factor which heightens osteoclast formation and bone resorption. This gene has three pseudogenes located on chromosomes 4, 9 and 10, respectively. Multiple alternatively spliced transcript variants encoding different isoforms have been found for this gene. [provided by RefSeq, Jul 2008],
Function :	domain:A pair of annexin repeats may form one binding site for calcium and phospholipid.,function:Calcium-regulated membrane-binding protein whose affinity for calcium is greatly enhanced by anionic phospholipids. It binds two calcium ions with high affinity. May be involved in heat-stress response.,miscellaneous:It may cross-link plasma membrane phospholipids with actin and the cytoskeleton and be involved with exocytosis.,online information:Red velvet - Issue 86 of September 2007,PTM:Phosphorylation of Tyr-24 enhances heat stress-induced translocation to the cell surface.,similarity:Belongs to the annexin family.,similarity:Contains 4 annexin repeats.,subcellular location:In the lamina beneath the plasma membrane. Identified by mass spectrometry in melanosome fractions from stage I to stage IV. Translocated from the cytoplasm to the cell surface through a Golgi-independent mechanism.,s
Subcellular Location :	Secreted, extracellular space, extracellular matrix, basement membrane . Melanosome . In the lamina beneath the plasma membrane. Identified by mass spectrometry in melanosome fractions from stage I to stage IV. Translocated from the cytoplasm to the cell surface through a Golgi-independent mechanism.
Expression :	Brain,Colon,Colon adenocarcinoma,Epithelium,Osteosarcoma,Pancreas,Placenta,Prostate,Skin,Te
Tag :	orthogonal,hot
Sort :	2052
No4 :	1
Host :	Rabbit

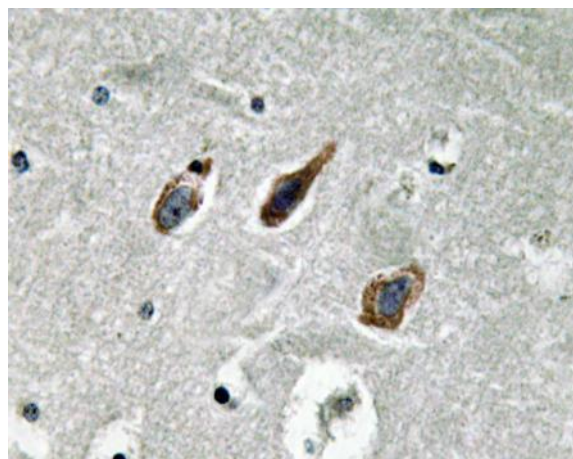
Products Images



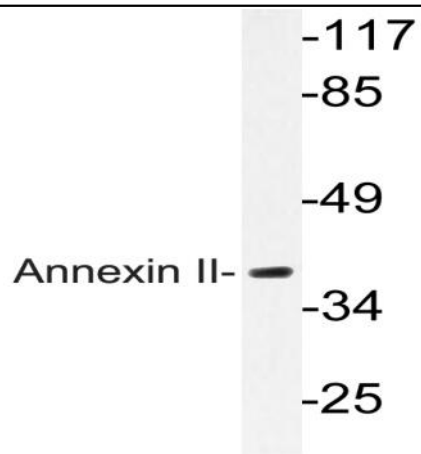
Western Blot analysis of various cells using Annexin II Polyclonal Antibody diluted at 1:2000



Western Blot analysis of HeLa cells using Annexin II Polyclonal Antibody diluted at 1:2000



Immunohistochemistry analysis of Annexin II antibody in paraffin-embedded human brain tissue.



Western blot analysis of lysate from HeLa cells, using Annexin II antibody.