

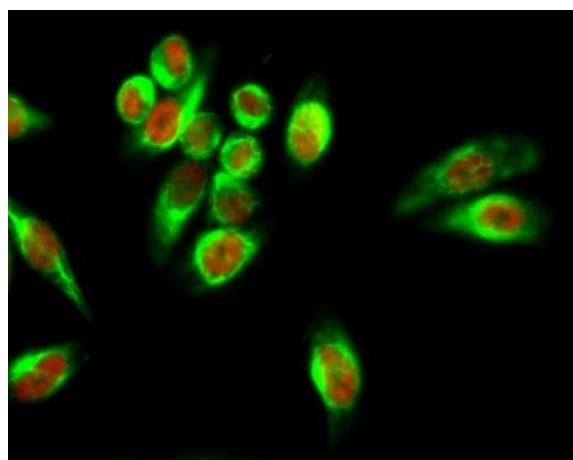
## Amyloid- $\beta$ Polyclonal Antibody

<b>Catalog No :</b>	YT0226
<b>Reactivity :</b>	Human;Mouse;Rat
<b>Applications :</b>	WB;IHC;IF;ELISA
<b>Target :</b>	Amyloid- $\beta$
<b>Fields :</b>	>>Serotonergic synapse;>>Alzheimer disease;>>Pathways of neurodegeneration - multiple diseases
<b>Gene Name :</b>	APP
<b>Protein Name :</b>	Amyloid beta A4 protein, Amyloid- $\beta$ , A $\beta$
<b>Human Gene Id :</b>	351
<b>Human Swiss Prot No :</b>	P05067
<b>Mouse Gene Id :</b>	11820
<b>Mouse Swiss Prot No :</b>	P12023
<b>Rat Gene Id :</b>	54226
<b>Rat Swiss Prot No :</b>	P08592
<b>Immunogen :</b>	The antiserum was produced against synthesized peptide derived from human APP. AA range:711-760
<b>Specificity :</b>	Amyloid- $\beta$ Polyclonal Antibody detects endogenous levels of Amyloid- $\beta$ protein.
<b>Formulation :</b>	Liquid in PBS containing 50% glycerol, 0.5% BSA and 0.02% sodium azide.
<b>Source :</b>	Polyclonal, Rabbit,IgG
<b>Dilution :</b>	WB 1:500 - 1:2000. IHC 1:100 - 1:300. IF 1:200 - 1:1000. ELISA: 1:40000. Not yet tested in other applications.

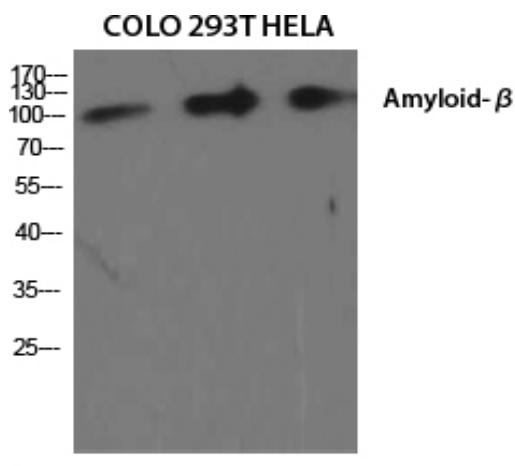
<b>Purification :</b>	The antibody was affinity-purified from rabbit antiserum by affinity-chromatography using epitope-specific immunogen.
<b>Concentration :</b>	1 mg/ml
<b>Storage Stability :</b>	-15°C to -25°C/1 year(Do not lower than -25°C)
<b>Observed Band :</b>	117kD
<b>Cell Pathway :</b>	Alzheimer's disease;
<b>Background :</b>	This gene encodes a cell surface receptor and transmembrane precursor protein that is cleaved by secretases to form a number of peptides. Some of these peptides are secreted and can bind to the acetyltransferase complex APBB1/TIP60 to promote transcriptional activation, while others form the protein basis of the amyloid plaques found in the brains of patients with Alzheimer disease. In addition, two of the peptides are antimicrobial peptides, having been shown to have bacteriocidal and antifungal activities. Mutations in this gene have been implicated in autosomal dominant Alzheimer disease and cerebroarterial amyloidosis (cerebral amyloid angiopathy). Multiple transcript variants encoding several different isoforms have been found for this gene. [provided by RefSeq, Aug 2014],
<b>Function :</b>	alternative products:Additional isoforms seem to exist. Experimental confirmation may be lacking for some isoforms,disease:Defects in APP are the cause of Alzheimer disease type 1 (AD1) [MIM:104300]. AD1 is a familial early-onset form of Alzheimer disease. It can be associated with cerebral amyloid angiopathy. Alzheimer disease is a neurodegenerative disorder characterized by progressive dementia, loss of cognitive abilities, and deposition of fibrillar amyloid proteins as intraneuronal neurofibrillary tangles, extracellular amyloid plaques and vascular amyloid deposits. The major constituent of these plaques is the neurotoxic amyloid-beta-APP 40-42 peptide (s), derived proteolytically from the transmembrane precursor protein APP by sequential secretase processing. The cytotoxic C-terminal fragments (CTFs) and the caspase-cleaved products such as C31 derived from APP, are also implicated
<b>Subcellular Location :</b>	Cell membrane ; Single-pass type I membrane protein . Membrane ; Single-pass type I membrane protein . Perikaryon . Cell projection, growth cone . Membrane, clathrin-coated pit . Early endosome . Cytoplasmic vesicle . Cell surface protein that rapidly becomes internalized via clathrin-coated pits. Only a minor proportion is present at the cell membrane; most of the protein is present in intracellular vesicles (PubMed:20580937). During maturation, the immature APP (N-glycosylated in the endoplasmic reticulum) moves to the Golgi complex where complete maturation occurs (O-glycosylated and sulfated). After alpha-secretase cleavage, soluble APP is released into the extracellular space and the C-terminal is internalized to endosomes and lysosomes. Some APP accumulates in secretory transport ves

<b>Expression :</b>	Expressed in the brain and in cerebrospinal fluid (at protein level) (PubMed:2649245). Expressed in all fetal tissues examined with highest levels in brain, kidney, heart and spleen. Weak expression in liver. In adult brain, highest expression found in the frontal lobe of the cortex and in the anterior perisylvian cortex-opercular gyri. Moderate expression in the cerebellar cortex, the posterior perisylvian cortex-opercular gyri and the temporal associated cortex. Weak expression found in the striate, extra-striate and motor cortices. Expressed in cerebrospinal fluid, and plasma. Isoform APP695 is the predominant form in neuronal tissue, isoform APP751 and isoform APP770 are widely expressed in non-neuronal cells. Isoform APP751 is the most abundant form in T-lymphocytes. Appican is expres
<b>Sort :</b>	2006
<b>No4 :</b>	1
<b>Host :</b>	Rabbit
<b>Modifications :</b>	Unmodified

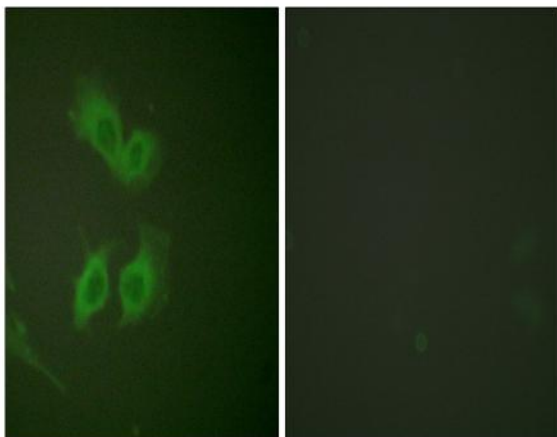
## Products Images



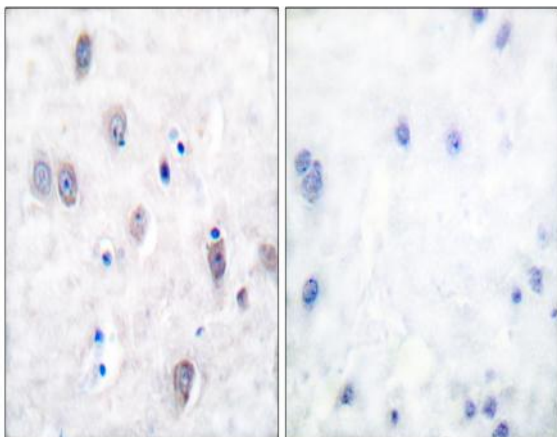
Immunofluorescence analysis of HeLa cell. 1, Amyloid- $\beta$  Polyclonal Antibody (green) was diluted at 1:200 (4° overnight). (red) was diluted at 1:200 (4° overnight). 2, Goat Anti Rabbit Alexa Fluor 488 Catalog: RS3211 was diluted at 1:1000 (room temperature, 50min). Goat Anti Mouse Alexa Fluor 594 Catalog: RS3608 was diluted at 1:1000 (room temperature, 50min).



Western Blot analysis of various cells using Amyloid- $\beta$  Polyclonal Antibody diluted at 1:2000



Immunofluorescence analysis of HeLa cells, using Amyloid beta A4 Antibody. The picture on the right is blocked with the synthesized peptide.



Immunohistochemistry analysis of paraffin-embedded human brain, using Amyloid beta A4 Antibody. The picture on the right is blocked with the synthesized peptide.