

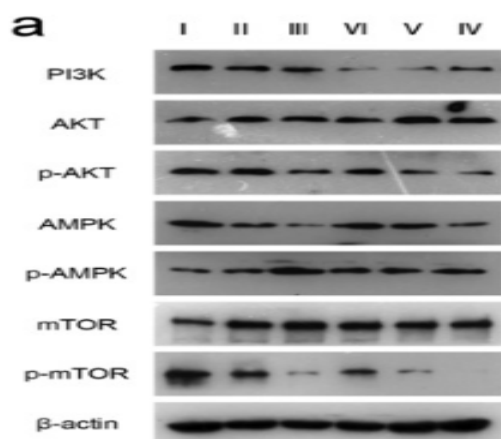
AMPK α 1/2 Polyclonal Antibody

Catalog No :	YT0216
Reactivity :	Human;Mouse;Rat;Monkey;Bovine;Fish
Applications :	WB;IHC;IF;ELISA
Target :	AMPK α 1/2
Fields :	>>FoxO signaling pathway;>>Autophagy - animal;>>mTOR signaling pathway;>>PI3K-Akt signaling pathway;>>AMPK signaling pathway;>>Longevity regulating pathway;>>Longevity regulating pathway - multiple species;>>Apelin signaling pathway;>>Tight junction;>>Circadian rhythm;>>Thermogenesis;>>Insulin signaling pathway;>>Adipocytokine signaling pathway;>>Oxytocin signaling pathway;>>Glucagon signaling pathway;>>Insulin resistance;>>Non-alcoholic fatty liver disease;>>Alcoholic liver disease;>>Hypertrophic cardiomyopathy;>>Fluid shear stress and atherosclerosis
Gene Name :	AAPK1/AAPK2
Protein Name :	5'-AMP-activated protein kinase catalytic subunit alpha-1/2
Human Gene Id :	5562/5563
Human Swiss Prot No :	Q13131/P54646
Mouse Gene Id :	105787/108079
Rat Gene Id :	65248/78975
Rat Swiss Prot No :	P54645/Q09137
Immunogen :	The antiserum was produced against synthesized peptide derived from human AMPK alpha. AA range:140-189
Specificity :	AMPK α 1/2 Polyclonal Antibody detects endogenous levels of AMPK α 1/2 protein.
Formulation :	Liquid in PBS containing 50% glycerol, 0.5% BSA and 0.02% sodium azide.

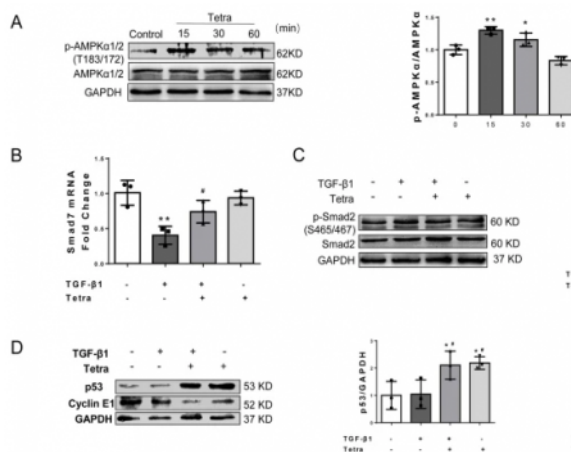
Source :	Polyclonal, Rabbit,IgG
Dilution :	WB 1:500-2000;IHC 1:100-500;IF ICC 1:100-500;ELISA 1:5000-20000
Purification :	The antibody was affinity-purified from rabbit antiserum by affinity-chromatography using epitope-specific immunogen.
Concentration :	1 mg/ml
Storage Stability :	-15°C to -25°C/1 year(Do not lower than -25°C)
Observed Band :	63kD
Cell Pathway :	Insulin Receptor; mTOR; AMPK
Background :	<p>The protein encoded by this gene belongs to the ser/thr protein kinase family. It is the catalytic subunit of the 5'-prime-AMP-activated protein kinase (AMPK). AMPK is a cellular energy sensor conserved in all eukaryotic cells. The kinase activity of AMPK is activated by the stimuli that increase the cellular AMP/ATP ratio. AMPK regulates the activities of a number of key metabolic enzymes through phosphorylation. It protects cells from stresses that cause ATP depletion by switching off ATP-consuming biosynthetic pathways. Alternatively spliced transcript variants encoding distinct isoforms have been observed. [provided by RefSeq, Jul 2008],</p>
Function :	<p>catalytic activity:ATP + a protein = ADP + a phosphoprotein.,cofactor:Magnesium.,enzyme regulation:Binding of AMP results in allosteric activation, inducing phosphorylation on Thr-174 by STK11 in complex with STE20-related adapter-alpha (STRAD alpha) pseudo kinase and CAB39. Also activated by phosphorylation by CAMKK2 triggered by a rise in intracellular calcium ions, without detectable changes in the AMP/ATP ratio.,function:Responsible for the regulation of fatty acid synthesis by phosphorylation of acetyl-CoA carboxylase. It also regulates cholesterol synthesis via phosphorylation and inactivation of hormone-sensitive lipase and hydroxymethylglutaryl-CoA reductase. Appears to act as a metabolic stress-sensing protein kinase switching off biosynthetic pathways when cellular ATP levels are depleted and when 5'-AMP rises in response to fuel limitation and/or hypoxia. This is a catalytic s</p>
Subcellular Location :	Cytoplasm . Nucleus . In response to stress, recruited by p53/TP53 to specific promoters. .
Expression :	Brain,Intestine,Liver,Mammary gland,Platelet,Testis
Tag :	orthogonal,hot

Sort :	1
No3 :	ab207442
Host :	Rabbit
Modifications :	Unmodified

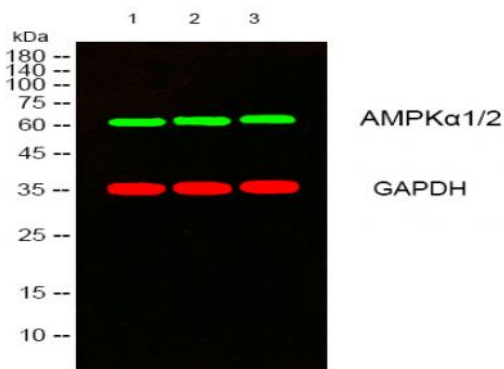
Products Images



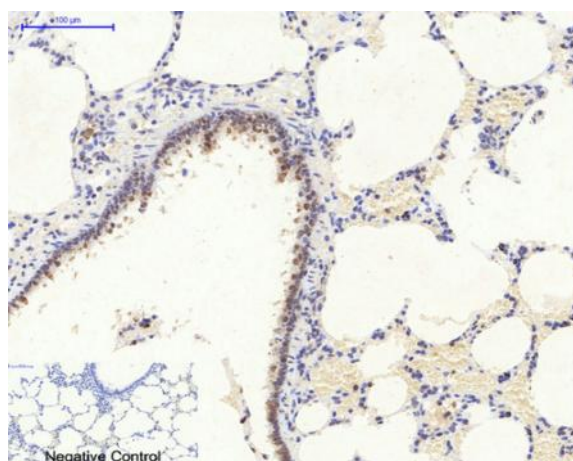
Kang, Min, et al. "Autophagy was activated against the damages of placentas caused by nano-copper oral exposure." *Ecotoxicology and Environmental Safety* 220 (2021): 112364.



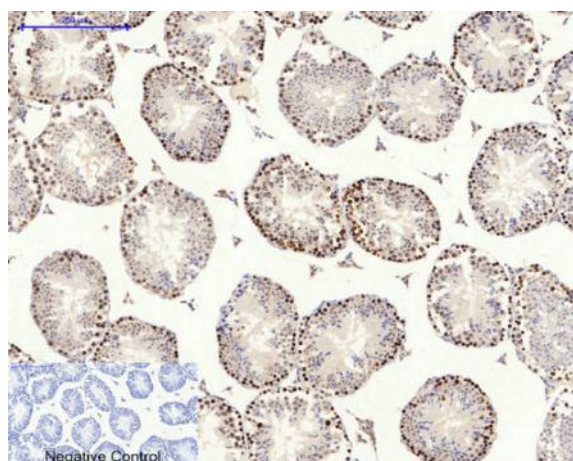
Gao, L., Wang, Ly., Liu, Zq. et al. TNAP inhibition attenuates cardiac fibrosis induced by myocardial infarction through deactivating TGF-β1/Smads and activating P53 signaling pathways. *Cell Death Dis* 11, 44 (2020)



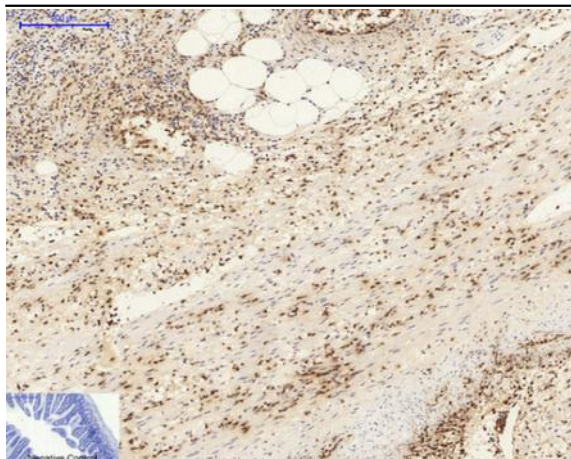
Western blot analysis of lysates from 1) K562 , 2) COS7 , 3) KB cells, [Green] primary antibody was diluted at 1:1000, 4° overnight, secondary antibody(cat:RS23920)was diluted at 1:10000, 37° 1hour. [Red] GAPDH Monoclonal Antibody(2B8) (cat:YM3029) antibody was diluted at 1:5000 as loading control, 4° overnight,secondary antibody(cat:RS23710)was diluted at 1:10000, 37° 1hour.



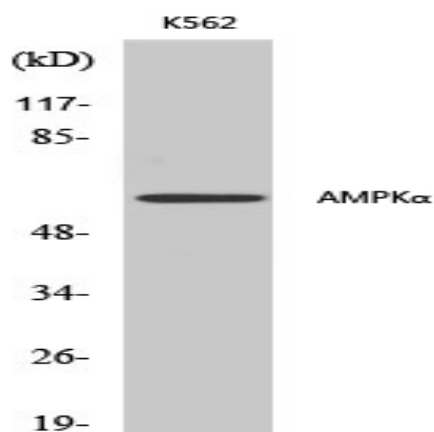
Immunohistochemical analysis of paraffin-embedded Rat-lung tissue. 1,AMPKα1/2 Polyclonal Antibody was diluted at 1:200(4°C,overnight). 2, Sodium citrate pH 6.0 was used for antibody retrieval(>98°C,20min). 3,Secondary antibody was diluted at 1:200(room temperature, 30min). Negative control was used by secondary antibody only.



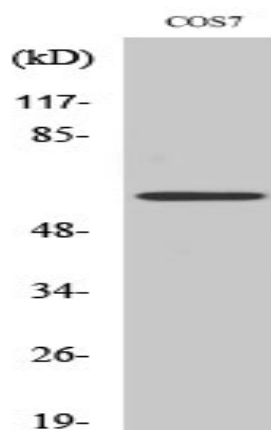
Immunohistochemical analysis of paraffin-embedded Mouse-testis tissue. 1,AMPKα1/2 Polyclonal Antibody was diluted at 1:200(4°C,overnight). 2, Sodium citrate pH 6.0 was used for antibody retrieval(>98°C,20min). 3,Secondary antibody was diluted at 1:200(room temperature, 30min). Negative control was used by secondary antibody only.



Immunohistochemical analysis of paraffin-embedded Mouse-colon tissue. 1, AMPK α 1/2 Polyclonal Antibody was diluted at 1:200 (4 °C, overnight). 2, Sodium citrate pH 6.0 was used for antibody retrieval (>98 °C, 20min). 3, Secondary antibody was diluted at 1:200 (room temperature, 30min). Negative control was used by secondary antibody only.



Western Blot analysis of various cells using AMPK α 1/2 Polyclonal Antibody diluted at 1:500



Western Blot analysis of COS7 cells using AMPK α 1/2 Polyclonal Antibody diluted at 1:500