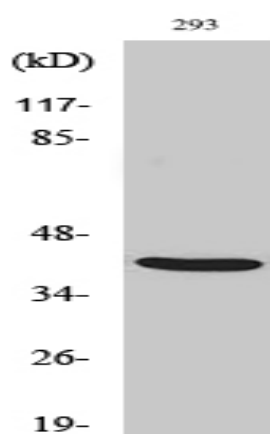


ALX3 Polyclonal Antibody

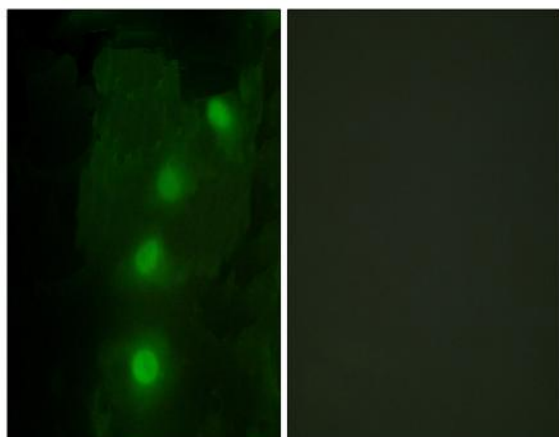
Catalog No :	YT0207
Reactivity :	Human;Mouse;Rat
Applications :	WB;IHC;IF;ELISA
Target :	ALX3
Gene Name :	ALX3
Protein Name :	Homeobox protein aristaless-like 3
Human Gene Id :	257
Human Swiss Prot No :	O95076
Mouse Gene Id :	11694
Mouse Swiss Prot No :	O70137
Immunogen :	The antiserum was produced against synthesized peptide derived from human ALX3. AA range:171-220
Specificity :	ALX3 Polyclonal Antibody detects endogenous levels of ALX3 protein.
Formulation :	Liquid in PBS containing 50% glycerol, 0.5% BSA and 0.02% sodium azide.
Source :	Polyclonal, Rabbit,IgG
Dilution :	WB 1:500 - 1:2000. IHC 1:100 - 1:300. IF 1:200 - 1:1000. ELISA: 1:20000. Not yet tested in other applications.
Purification :	The antibody was affinity-purified from rabbit antiserum by affinity-chromatography using epitope-specific immunogen.
Concentration :	1 mg/ml
Storage Stability :	-15°C to -25°C/1 year(Do not lower than -25°C)

Observed Band :	36kD
Background :	This gene encodes a nuclear protein with a homeobox DNA-binding domain that functions as a transcriptional regulator involved in cell-type differentiation and development. Preferential methylation of this gene's promoter is associated with advanced-stage neuroblastoma tumors. [provided by RefSeq, Jul 2008],
Function :	function:Transcriptional regulator with a possible role in patterning of mesoderm during development.,similarity:Belongs to the paired homeobox family.,similarity:Contains 1 homeobox DNA-binding domain.,
Subcellular Location :	Nucleus .
Expression :	Brain,Neuroblastoma,
Sort :	1930
No4 :	1
Host :	Rabbit
Modifications :	Unmodified

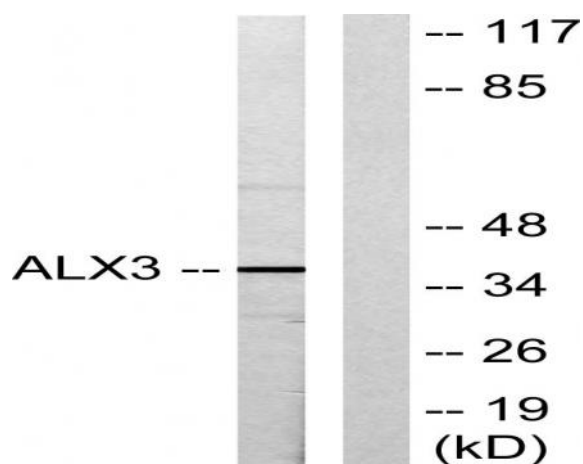
Products Images



Western Blot analysis of various cells using ALX3 Polyclonal Antibody cells nucleus extracted by Minute TM Cytoplasmic and Nuclear Fractionation kit (SC-003, Inventbiotech, MN, USA).



Immunofluorescence analysis of HeLa cells, using ALX3 Antibody. The picture on the right is blocked with the synthesized peptide.



Western blot analysis of lysates from 293 cells, using ALX3 Antibody. The lane on the right is blocked with the synthesized peptide.



Immunohistochemical analysis of paraffin-embedded human Colon cancer. 1, Antibody was diluted at 1:200(4° overnight). 2, Tris-EDTA,pH9.0 was used for antigen retrieval. 3,Secondary antibody was diluted at 1:200(room temperature, 45min).